

PET-7000/ET-7000

Quick Start

V1.4, March 2018

Supported Products

- ET-7000 Series
- ET-7000-UT Series
- PET-7000 Series

Technical Support

PET-7000 / ET-7000 User Manual

http://ftp.icpdas.com/pub/cd/6000cd/napdos/et7000_et7200/document/

What's in the Box?



PET-7000/ET-7000 Module



Plastic Rail



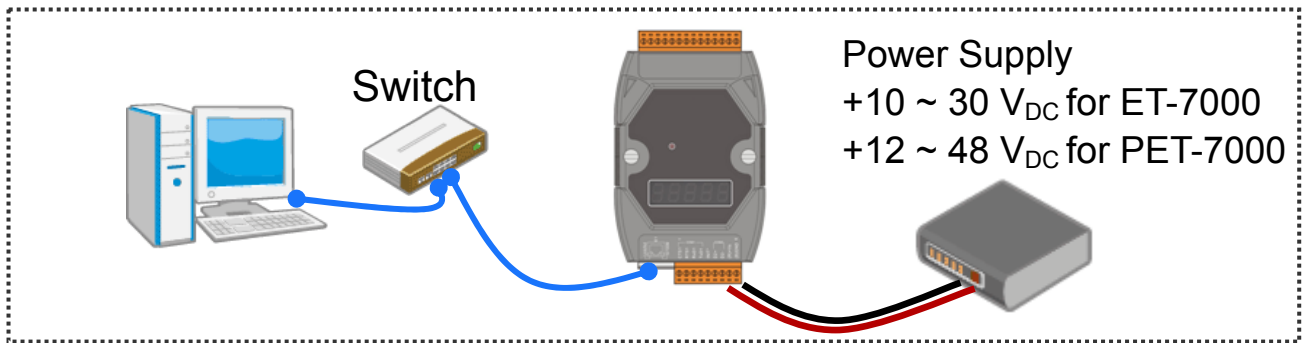
Quick Start

1 Factory Default Settings

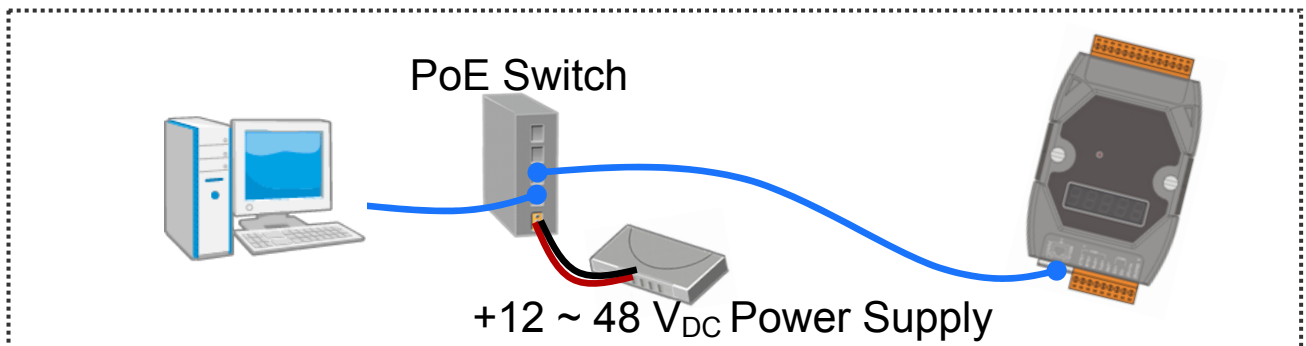
Network Connection	Default	Authentication	Default
IP Address:	192.168.255.1	User name:	Admin
Subnet Mask:	255.255.0.0	Password:	Admin
Gateway:	192.168.0.1		

2 Connecting to Network, Computer and Power

Non-PoE



PoE

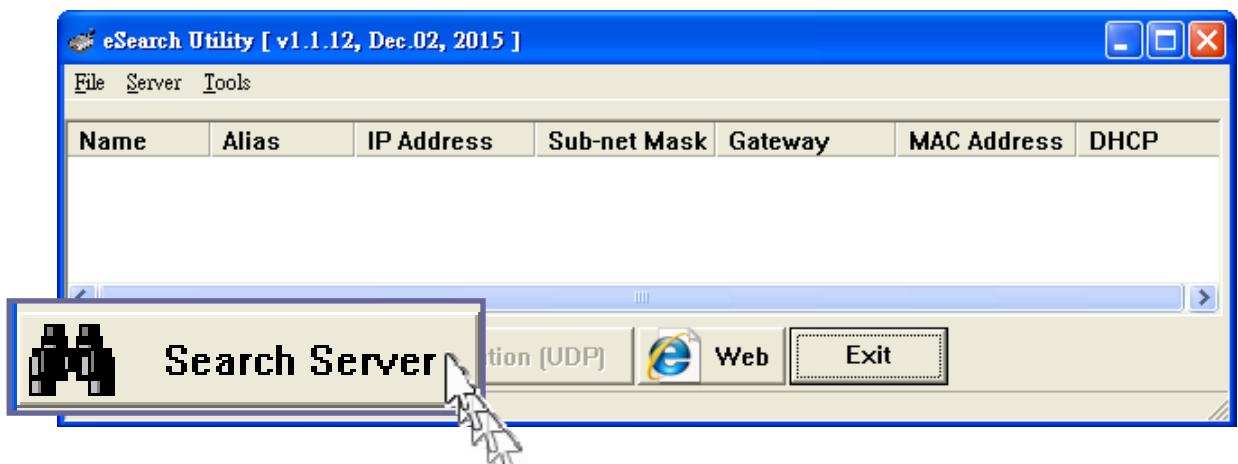


3-1 Assigning a Valid IP Address - Method 1

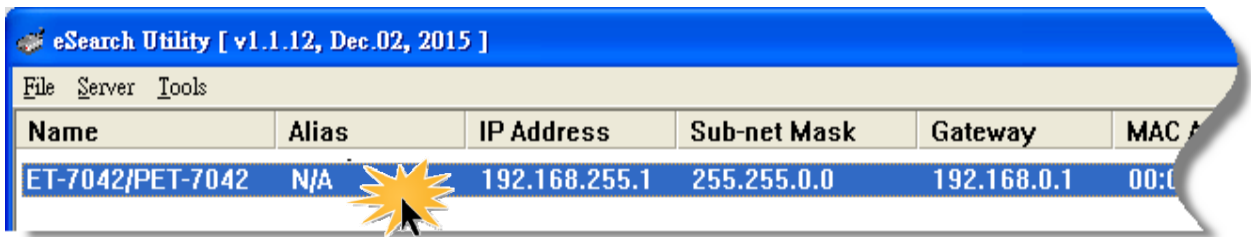
1) Install eSearch from

<http://ftp.icpdas.com/pub/cd/6000cd/napdos/software/esearch/>

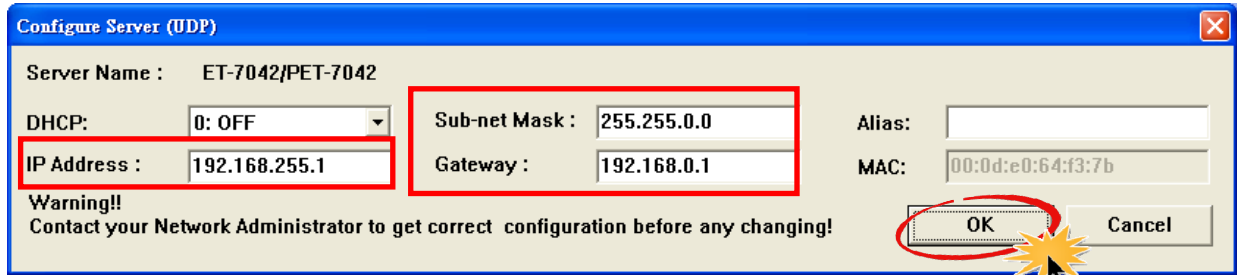
2) Launch eSearch and click “Search Server”



3) Double-click the name for your module on the list



4) Enter the network configuration and click “OK”



5) Repeat Step 2. to search the module again To make sure your modifications take effect.

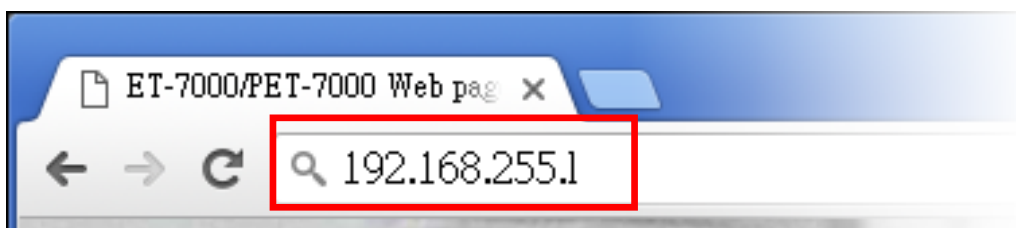
3-2 Assigning a Valid IP Address - Method 2

1) Set the IP configuration on your computer

The ET-7000 module comes with the default IP address of 192.168.255.1, you must chose an IP address for the computer in the range of 192.168.255.2 – 192.168.255.253 that is not in use.

2) Launch your web browser to go to the ET-7000 web interface

Enter the factory default IP address **192.168.255.1** for the ET-7000 as the URL in browser and press Enter.

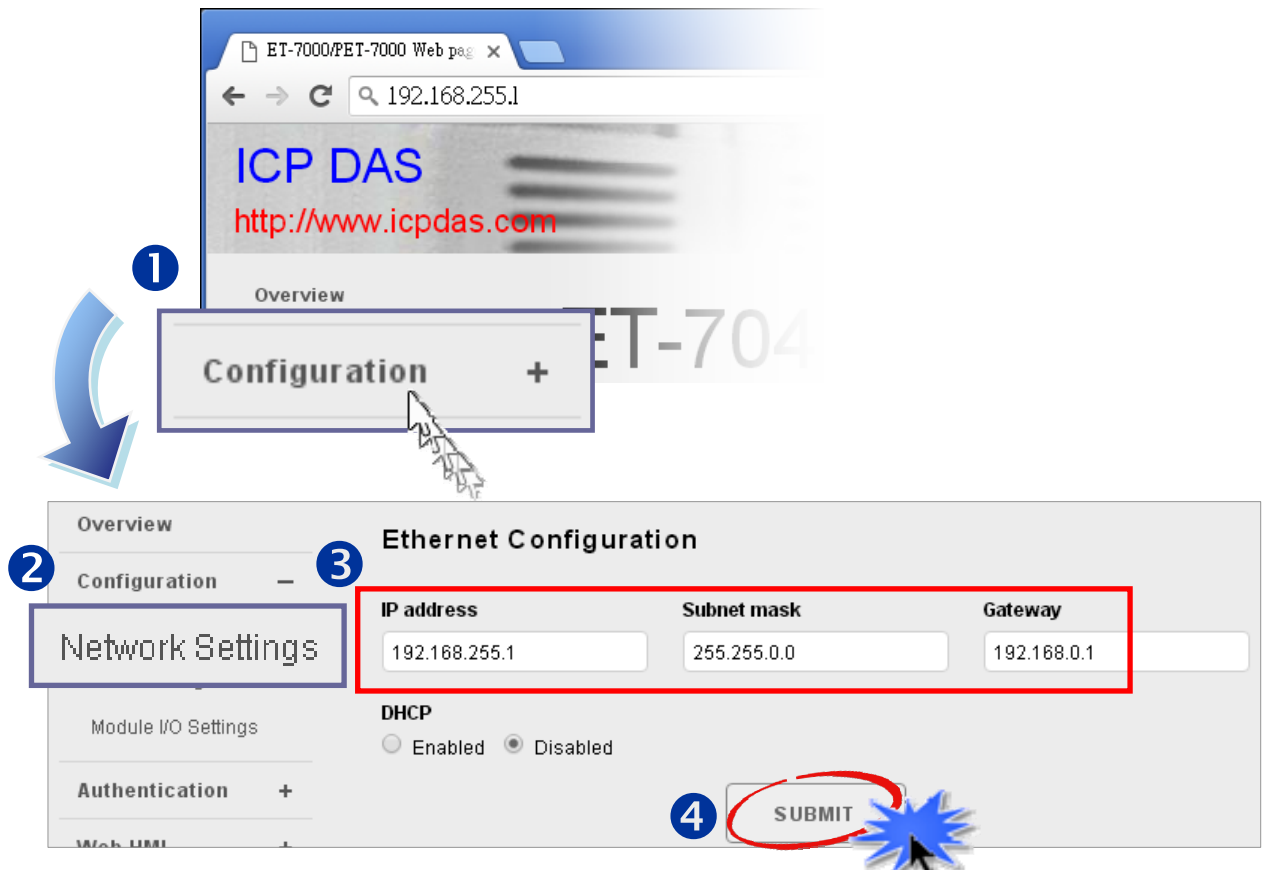


3) Fill out the User name and Password

Fill out the factory default user name and password “Admin” and then click “OK”.

4) Assign a valid IP address for your ET-7000 module

1. Click “Configuration”
2. Click “Network Settings” in the sub-menu
3. Enter a valid IP address for your ET-7000 module.
4. Click the “SUBMIT” button.



5) Restore the original IP address to your computer

4 Logging in to the ET-7000 Module

- 1) Enter the new IP for the ET-7000 as the URL in browser
- 2) Fill out the User name and Password “Admin” again
- 3) Welcome to ET-7000 web site