

EVENT101A

EVENT DATA LOGGER



¡ Tu Sitio de Automatización !

Features

- 10 Year Battery Life
- 4Hz Reading Rate
- Multiple Start/Stop Function
- Ultra High Speed Download
- 406,323 Events Storage Capacity
- Memory Wrap
- Battery Life Indicator
- Optional Password Protection
- Field Upgradeable

Benefits

- Simple Setup and Installation
- Minimal Long-Term Maintenance
- Long-Term Field Deployment

Applications

- Monitoring Gas, Water or Electric Meters
- Rainfall Monitoring
- Contact Closure Monitoring
- Time Studies
- Traffic Studies



The Event101A is one of MadgeTech's newest data loggers. It is part of a new series of low cost, state-of-the-art data logging devices. MadgeTech has taken the lead in offering the most advanced, low cost, battery powered data loggers in the world today.

The Event101A offers a 10 year battery life, 4Hz reading rate, a multiple start/stop function, ultra-high speed download capability, 406,323 reading storage capacity, optional memory wrap, battery life indicator, optional password protection and more. The Event101A is priced at \$99 each and can be delivered from stock now. Our research has shown that the Event101A is second to no other data logger when it comes to price and performance.

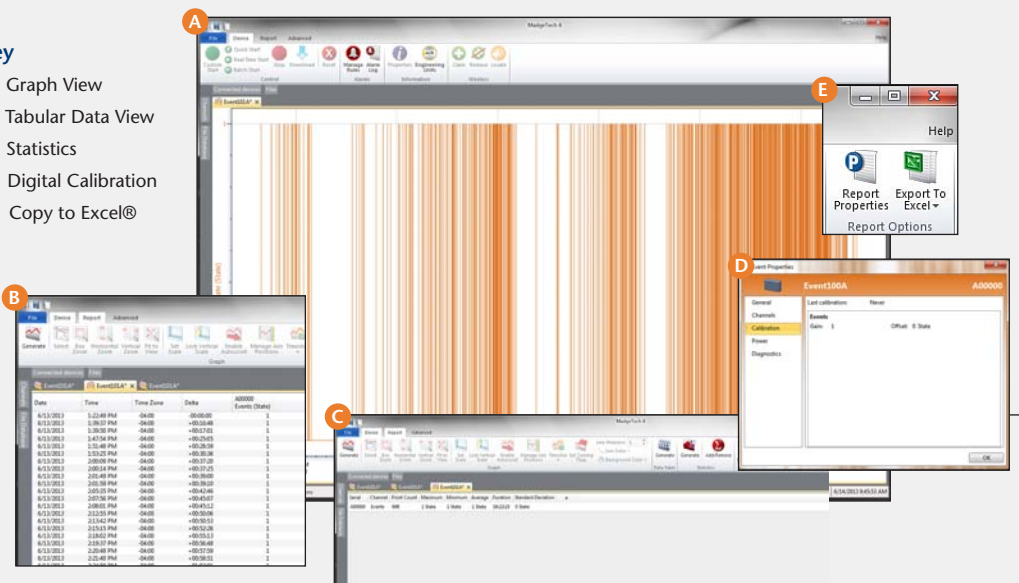
Using the MadgeTech Software, starting, stopping and downloading from the Event101A is simple and easy. Graphical, tabular and summary data is provided for analysis and data can be viewed in multiple units, using the Engineering Units function. The data can also be automatically exported to Excel® for further calculations.

As the leader in low power data logger technology, MadgeTech continuously improves its products and develops solutions to meet ever-changing challenges. The Event101A was designed with our customers in mind. MadgeTech offers free firmware upgrades for the life of the product so that data loggers already deployed in the field can grow with new technological developments. Units do not need to be returned to the factory for upgrades. The user can do this automatically from any PC.

DATA LOGGER SOFTWARE

Key

- A** Graph View
- B** Tabular Data View
- C** Statistics
- D** Digital Calibration
- E** Copy to Excel®



Software Features:

- Multiple graph overlay
- Statistics
- Digital calibration
- Zoom in/ zoom out
- Lethality equations (F0, PU)
- Mean Kinetic Temperature
- Full time zone support
- Data annotation
- Min./Max./Average lines
- Data table view
- Automatic report generation
- Summary view
- Multilingual

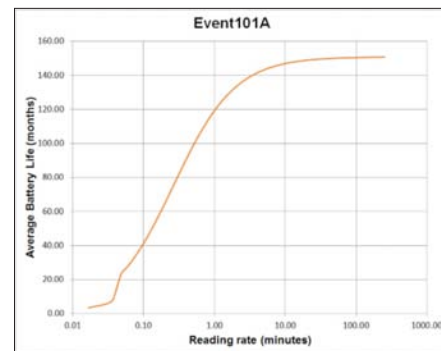


¡Tu sitio de automatización!

EVENT101A SPECIFICATIONS*

Input Connection:	Removable screw terminal
Input Range:	0 to 30V
Input Low:	<0.4V
Input High:	>2.8V
Internal Weak Pull-Up:	<60µA
Input Impedance:	>60kΩ
Minimum Input Active (Low) Time:	10 Microseconds
Time Resolution:	4Hz (reading rate selectable in software)
Reading Rate**:	4Hz to 1 every 24 hours
Memory:	406,323 readings; software configurable memory wrap
Wrap Around:	Yes
Start Modes:	<ul style="list-style-type: none"> Immediate start Delay start up to 18 months Multiple pushbutton start/stop
Multiple Start/Stop Mode:	Start and stop the device multiple times without having to download data or communicate with a PC
Stop Modes:	<ul style="list-style-type: none"> Manual through software Timed (specific date and time)
Multiple Start/Stop Mode Activation:	<p>To start the device: Press and hold the pushbutton for 5 seconds, the green LED will flash during this time. The device has started logging.</p> <p>To stop the device: Press and hold the pushbutton for 5 seconds, the red LED will flash for three seconds and then the green LED will flash for two seconds. The device has stopped logging.</p>
Real Time Recording:	The device may be used with PC to monitor and record data in real-time
LED Functionality:	<p>Green LED blinks: 10 second rate to indicate logging 15 second rate to indicate delay start mode</p> <p>Red LED blinks: 10 second rate to indicate low battery and/or full memory</p>

Password Protection:	An optional password may be programmed into the device to restrict access to configuration options. Data may be read out without the password.
Engineering Units:	Native measurement units can be scaled to display measurement units of another type such as on/off, open/closed or rainfall.
Battery Type:	3.6V lithium battery included; user replaceable
Battery Life:	10 years typical, dependent upon frequency and duty cycle.



Graph display of the device recording in a 25°C environment.

Time Accuracy:	±1 minute/month (at 20°C/68°F, stand alone data logging)
Computer Interface:	USB (interface cable required); 115,200 baud
Software:	XP SP3/Vista/Windows 7/Windows 8
Operating Environment:	-40°C to +80°C (-40°F to +176°F), 0%RH to 95%RH non-condensing
Dimensions:	1.4" x 2.2" x 0.6" (36mm x 56mm x 16mm)
Weight:	0.9 oz (24 g)
Materials:	ABS Plastic
Approvals:	CE

BATTERY WARNING: FIRE, EXPLOSION, AND SEVERE BURN HAZARD. DO NOT RECHARGE, DISASSEMBLE, HEAT ABOVE 212°F, INCINERATE OR EXPOSE CONTENTS TO WATER.

ORDERING INFORMATION

MODEL	DESCRIPTION
EVENT101A	Event Data Logger
IFC200	Software, manual and USB interface cable
LTC-7PN	Replacement battery for Event101A

ASK ABOUT OUR OTHER DATA LOGGERS

- Temperature
- Humidity
- Pressure
- pH
- Level
- Shock
- LCD Display
- Pulse/Event/State
- Current
- Voltage
- Wireless
- Intrinsically Safe
- Spectral Vibration
- Motion

