

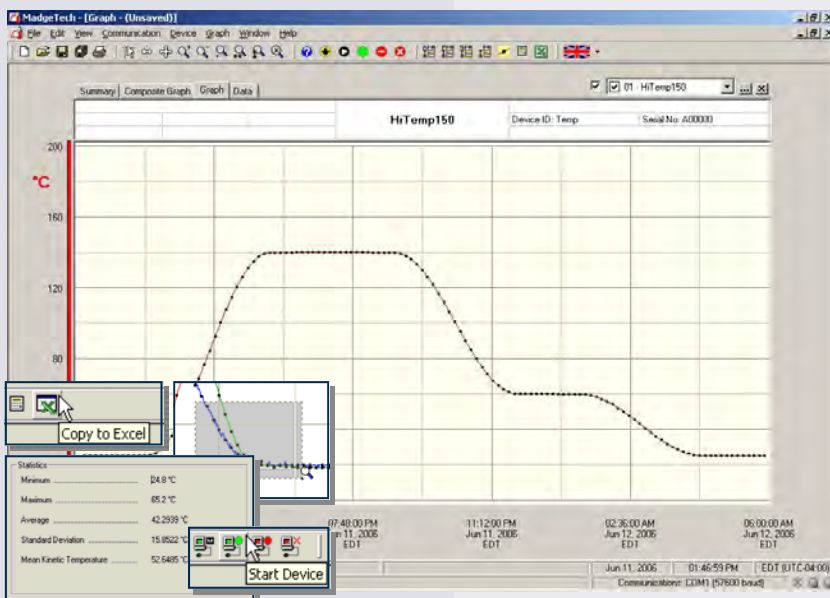
Features

- Extended temperature range
- Rugged
- Reusable
- Submersible
- Programmable start time
- Real-time operation
- N.I.S.T. traceable
- User-friendly
- Low cost

Applications

- Autoclave Verification
- Medical/Pharmaceutical
- Implement HACCP Programs
- Food preparation and processing
- Environmental studies
- Well monitoring
- Dish washer testing
- Hostile environment monitoring

The HiTemp150 temperature logger is a rugged, submersible, battery powered, stand alone device which can be used to automatically record temperatures between -200 and 260°C . This all in one compact, portable, easy to use device is able to measure and record up to 32,767 temperature measurements. The HiTemp150 features a 2" rigid external probe* with fast response time to ensure accurate temperature readings and is ideal for use in harsh environments. Its real time clock ensures that all the data is time and date stamped. The storage medium is non-volatile solid state memory, providing maximum data security even if the battery becomes discharged. The device can be started and stopped directly from your computer and its small size allows it to fit almost anywhere. The HiTemp150 makes data retrieval quick and easy. Simply plug the device into an empty COM or USB port and our user-friendly software does the rest.



Data Recorder Software

Reports temperature data in an easy to use graph.

The Windows[®]-based software package allows the user to effortlessly collect, display and analyze data. A variety of powerful tools allow you to examine, export, and print professional looking data with just a click of the mouse.

HITEMP150 SPECIFICATIONS*

Temperature Sensor: 100Ω Platinum RTD	Calibration: Digital calibration through software
Probe Measurement Range: -200 to +260°C	Calibration Date: Automatically recorded within device
Temperature Resolution: 0.05°C	Data Format: Date and time stamped °C, °F, K, °R
Calibrated Accuracy: ±0.5°C	Time Accuracy: ±1 minute/month at 20°C (RS232 cable not in use)
Start Modes: Software programmable immediate start or delay start up to six months in advance	Computer Interface: PC serial or USB (Interface cable required); 2,400 baud
Real Time Recording: May be used with PC to monitor and record data in real time	Software: XP SP3/Vista/Windows 7
Memory: 32,767 readings	Operating Environment: -40 to +150°C, 0 to 100%RH
Reading Rate: One second up to once every 12 hours.	Dimensions (Body): 1.1" x 1.75" dia. (28mm x 45mm dia.)
Battery Type: 3.9V high-temperature lithium battery included	Dimensions (Probe): 2.0" x 3/16" dia. (50mm x 5mm dia.) *Other probes available
Battery Life*: 1 year typical (1 minute reading rate @ 25°C)	Weight: 8 oz (225 g)
	Material: 316 Stainless Steel
	Approvals: CE

*The user cannot replace battery.

WARNING: FIRE, EXPLOSION, AND SEVERE BURN HAZARD. DO NOT SHORT CIRCUIT, CHARGE, FORCE OVERDISCHARGE, DISASSEMBLE, CRUSH, PENETRATE OR INCINERATE. BATTERY MAY LEAK OR EXPLODE IF HEATED ABOVE 150° C (302° F).

SOFTWARE FEATURES

Multiple Graphs: Simultaneously analyze data from several units or deployments; easily switch to a single data series	Statistics: Calculate averages, min, max, standard deviation, and mean kinetic temperature with the touch of a button
Real-Time Recording: Collect and display data in real-time while continuing to log	Export Data: Export data in a variety of common formats, or switch to Excel® with a single click
Graphical Cursor: One click displays readings by time, value, parameter or sample number	Calibration: Automatically calculate and store calibration parameters
Data Table: Instantly access tabular view for detailed dates, times, values, and annotations	Logger Configuration: Easy set up and launch of data loggers with immediate or delayed start, preferred sample rate, and device ID
Scaling Options: Autoscale function fits data to the screen, or allows user to manually enter their own values	Communications: Automatically sets up communications port, or lets user select configuration
Formatting Options: Change colors, line styles, plotting options, show or hide channels quickly	Printing: Automatically print graphical or tabular data

ORDERING INFORMATION

<u>Model</u>	<u>Description</u>
HITEMP150	Extended Range Temperature Recorder
HITEMP150-CERT	Extended Range Temperature Recorder with N.I.S.T. Certificate
IFC110	Software, manual and RS232 interface cable
IFC200	Software, manual and USB interface cable
SVP –Secure	Protocols for validating the 21 CFR Part 11 ready, secure data logging system
SVP-Secure License	License for MadgeTech SVP-Secure Software (unlimited users, license per computer)

ASK ABOUT OUR OTHER DATA RECORDERS

Temperature	Pulse/Event/State
Humidity	Low Level Current
Pressure	Low Level Voltage
pH	RF Transmitters
Level	Intrinsically Safe
Shock	Spectral Vibration
LCD Display	