

Features

- Extended temperature range
- Flexible Probe
- Teflon enclosed cable
- Rugged
- Reusable
- Programmable start time
- Real-time operation
- N.I.S.T. traceable
- Easy-to-use software
- Low cost

Applications

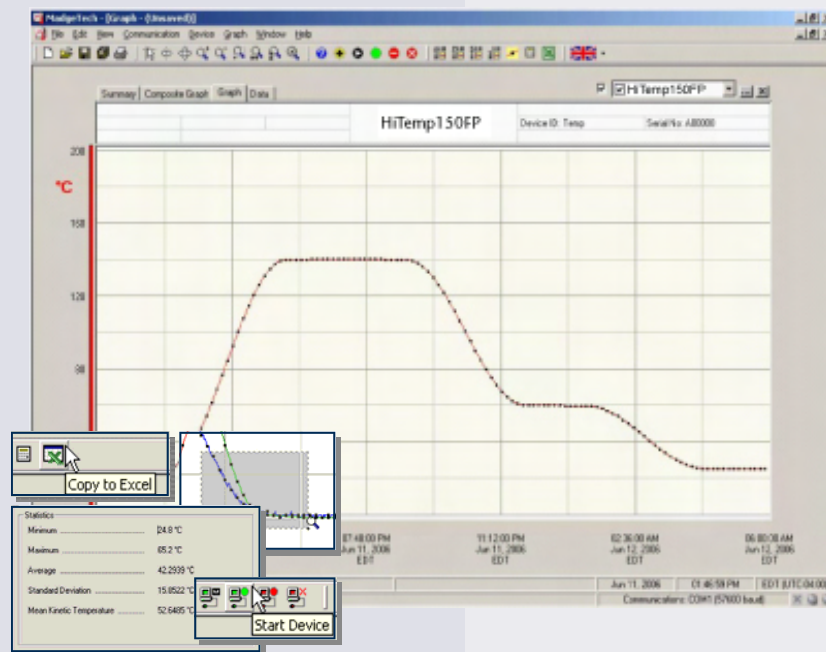
- Medical/Pharmaceutical
- HACCP Compliance
- Food preparation and processing
- Extreme temperature monitoring
- Conveyor Ovens

The HiTemp150FP is a small, rugged, reusable temperature data logger specifically designed for deployment in harsh environments. The HiTemp150FP comes standard with a 24" flexible teflon enclosed cable, 4" penetration style stainless steel probe, and 316 stainless steel body (other cable and probe lengths available through special order). With a measurement range of -40°C to +260°C, the HiTemp150FP is perfect for use in autoclaves, medical and pharmaceutical labs, food preparation and processing plants, and other applications involving extreme temperatures.

The HiTemp150FP features an RTD temperature sensor, which allows for extremely fast response times and highly accurate readings. Reading rates are configurable from once every second to once every twelve hours. With a reading capacity of 32,767 data points, the HiTemp150FP is perfect for use in even the longest of processes. Its real time clock ensures that all data is time and date stamped, making it easy to track and analyze temperature changes. The logger can be set for an immediate start or for activation at a future date and time, allowing for simultaneous data recording via the deployment of multiple loggers. Its non-volatile solid state memory keeps written data intact, even if the battery becomes discharged.

One of the most powerful features of the HiTemp150FP is the accompanying software. MadgeTech's easy-to-use Windows® based program features a variety of powerful tools, all of which work together to allow for the effortless creation and exportation of professionally formatted spreadsheets and customized graphs. Complex analyses, such as Mean Kinetic Temperature, Sterilization Units, and Pasteurization Units, can be performed with just one click of the mouse.

In addition to data analysis, MadgeTech's software is used for the digital calibration of the HiTemp150FP. Thanks to the software's easy calibration wizard, this task can be quickly performed by even the most novice of computer users. For those requiring an additional guarantee of accuracy, N.I.S.T. calibration certificates are available.


Data Recorder Software

Reports temperature data in an easy to use graph.

The Windows®-based software package allows the user to effortlessly collect, display and analyze data. A variety of powerful tools allow you to examine, export, and print professional looking data with just a click of the mouse.

HITEMP150FP SPECIFICATIONS*

Temperature Sensor: 100Ω Platinum RTD
Probe Measurement Range: -40 to +260°C
Temperature Resolution: 0.05°C
Calibrated Accuracy: ±0.5°C (Over 100°C span)
Start Modes: Software programmable immediate start or delay start up to six months in advance
Real Time Recording: May be used with PC to monitor and record data in real time
Memory: 32,767 readings
Reading Rate: One second up to once every 12 hours
Lethality Equations: Sterilization unit and Pasteurization units are available in the software with a click of a button
Calibration: Digital calibration through software
Calibration Date: Automatically recorded within device
Battery Type: 3.9V high-temperature lithium battery included
Battery Life*: 1 year typical (1 min. reading rate @ 25°C)

*The user cannot replace battery.

Data Format: Date and time stamped °C, °F, K, °R
Time Accuracy: ±1 minute/month at 20°C (RS232 cable not in use)
Computer Interface: PC serial or USB (interface cable required); 2,400 baud
Software: XP SP3/Vista/Windows 7
Operating Environment: -40 to +150°C, 0 to 95% RH non-condensing
Dimensions (Body): 1.1" x 1.75" dia. (28mm x 45mm dia.)
Dimensions (Cable*): 2.0' x .14" dia. (610 mm x 4mm dia.)
Dimensions (Probe Handle): 1½" x 3/8" dia. (39mm x 10 mm dia.)
Dimensions (Probe): 4" x 1/8" dia. (102mm x 4mm dia.)
(Other Probe lengths available upon request)
Material (Body & Probe): 316 stainless steel
Material (Cable): Teflon cable
Approvals: CE
Weight: 9 oz (255 g)

WARNING: FIRE, EXPLOSION, AND SEVERE BURN HAZARD. DO NOT SHORT CIRCUIT, CHARGE, FORCE OVERDISCHARGE, DISASSEMBLE, CRUSH, PENETRATE OR INCINERATE. BATTERY MAY LEAK OR EXPLODE IF HEATED ABOVE 150° C (302° F).

SOFTWARE FEATURES

Multiple Graphs: Simultaneously analyze data from several units or deployments; easily switch to a single data series
Real-Time Recording: Collect and display data in real-time while continuing to log
Graphical Cursor: One click displays readings by time, value, parameter or sample number
Data Table: Instantly access tabular view for detailed dates, times, values, and annotations
Scaling Options: Autoscale function fits data to the screen, or allows user to manually enter their own values
Formatting Options: Change colors, line styles, plotting options, show or hide channels quickly
Statistics: Calculate average, min, max, standard deviation, and mean kinetic temperature with the touch of a button
Export Data: Export data in a variety of common formats, or switch to Excel® with a single click
Calibration: Automatically calculate and store calibration parameters
Logger Configuration: Easy set up and launch of data loggers with immediate or delayed start, preferred sample rate, and device ID
Printing: Automatically print graphical or tabular data

ORDERING INFORMATION

<u>Model</u>	<u>Description</u>
HITEMP150FP	Extended Range Temperature Recorder with Flexible Probe
IFC110	Software, manual and RS232 interface cable
IFC200	Software, manual and USB interface cable
NIST	N.I.S.T. Calibration Certificate
SVP –Secure	Protocols for validating the 21 CFR Part 11 ready, secure data logging system
SVP-Secure License	License for MadgeTech SVP-Secure Software (unlimited users, license per computer)

ASK ABOUT OUR OTHER DATA RECORDERS

Temperature	Pulse/Event/State
Humidity	Low Level Current
Pressure	Low Level Voltage
pH	RF Transmitters
Level	Intrinsically Safe
Shock	Spectral Vibration
LCD Display	