

¡ Tu Sitio de Automatización !

Features

- 10 Year Battery Life
- Wide Temperature Range
- Uses Thermocouple Type K (contact sales for other types)
- High Speed Download
- N.I.S.T. Traceable
- Real-time Operation
- Low Cost
- Programmable Start Time
- Miniature Size

Benefits

- Simple Setup and Installation
- Minimal Long-Term Maintenance
- Long-Term Field Deployment

Applications

- Non-contact Temperature Monitoring
- Flow Monitoring
- Surface Temperature
- Process Verification and Validation
- Remote Areas
- Moving Objects
- Long Distance Temperature Measurement
- Heavy Equipment

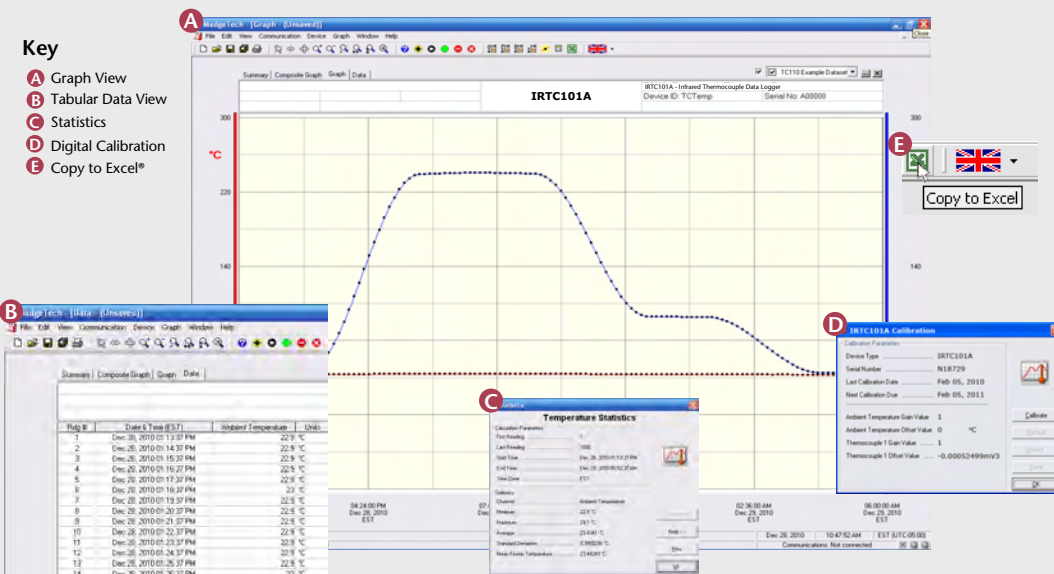
The IRTC101A is a battery powered infrared thermocouple based temperature data logger. It provides nearly instantaneous, non-contact temperature measurements, making it a perfect solution for applications such as surface temperature recording and monitoring moving objects.



The IRTC101A features a 10 year battery life, 1 second reading rate, a multiple start/stop function, ultra-high speed download capability, 500,000 reading storage capacity, optional memory wrap, battery life indicator, optional password protection, programmable high-low alarms and more.

As the leader in low power data logger technology, continuously improves its products and develops solutions to meet ever-changing challenges. The IRTC101A was designed with our customers in mind.

DATA LOGGER SOFTWARE



- Software Features:**
- Multiple graph overlay
 - Statistics
 - Digital calibration
 - Zoom in/ zoom out
 - Lethality equations (F₀, PU)
 - Mean Kinetic Temperature
 - Full time zone support
 - Data annotation
 - Min./Max./Average lines
 - Data table view
 - Automatic report generation
 - Summary view
 - Multilingual

IRTC101A SPECIFICATIONS*

Internal Channel

Temperature Range: -40°C to +80°C (-40°F to +176°F)

Temperature Resolution: 0.1°C (0.18°F)

Calibrated Accuracy: ±0.25°C (±0.45°F)

Remote Channel

Thermocouple Type: K (Infrared, contact sales for other types)

Thermocouple connection: Female subminiature (SMP)

Cold Junction Compensation: Automatic, based on internal channel

Maximum Thermocouple Resistance: 3000Ω

Thermocouple Type	Range (°C)	Sensor
K	25 to 80°C	±2.0°C

Contact for other ranges.

Field of View: 60° (1:1)

Minimum Spot Size: 8 mm (0.3")

Spectral Response: 6.5 to 14 microns

Reading Rate: 1 reading every second to 1 every 24 hours

Memory: 500,000 readings; software configurable memory wrap
250,000 readings in multiple start/stop mode

Wrap Around: Yes

- Start Modes:**
- Immediate start
 - Delay start up to 18 months
 - Multiple pushbutton start/stop

Multiple Start/Stop Mode: Start and stop the device multiple times without having to download data or communicate with a PC

Multiple Start/Stop Mode To start the device:

Activation: Press and hold the pushbutton for 5 seconds, the green LED will flash during this time. The device has started logging.

To stop the device:
Press and hold the pushbutton for 5 seconds, the red LED will flash during this time. The device has stopped logging.

Real Time Recording: The device may be used with PC to monitor and record data in real-time

Alarm: Programmable high and low limits; alarm is activated when temperature reaches or exceeds set limits

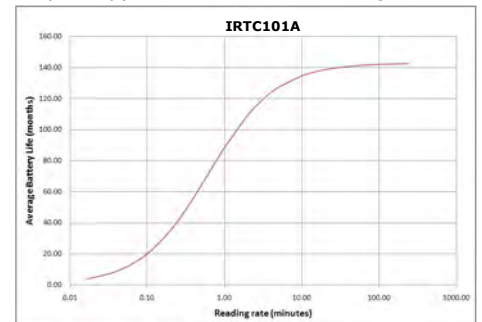
LED Functionality: Green LED blinks:
10 second rate to indicate logging
15 second rate to indicate delay start mode

Red LED blinks:
10 second rate to indicate low battery and/or full memory
1 second rate to indicate an alarm condition

Password Protection: An optional password may be programmed into the device to restrict access to configuration options. Data may be read out without the password.

Battery Type: 3.6V lithium battery included; user replaceable

Battery Life: 10 years typical at a 15 minute reading rate



Graph display of the device recording in a 25°C environment.

Data Format: Date and time stamped °C, °F, K, °R; μV, mV, V

Time Accuracy: ±1 minute/month (at 20°C, stand alone data logging)

Computer Interface: USB (interface cable required); 115,200 baud

Software: XP SP3/Vista/Windows 7

Operating Environment: -18 to +70°C (-40 to 158°F)

Dimensions: 1.4" x 2.2" x 0.6" (36mm x 56mm x 16mm)

Data Logger Probe 3.25" L x 1.80 cm Dia. (1.28 x 0.71"); 0.9 m

Dimensions: (36") PFA coated unshielded stranded wire

Weight: 0.9 oz (24 g)

BATTERY WARNING: FIRE, EXPLOSION, AND SEVERE BURN HAZARD. DO NOT RECHARGE, DISASSEMBLE, HEAT ABOVE 212°F, INCINERATE OR EXPOSE CONTENTS TO WATER.

ORDERING INFORMATION

MODEL	DESCRIPTION
IRTC101A	Thermocouple Recorder with infrared thermocouple.
IFC200	Software, manual and USB interface cable
*N.I.S.T.	N.I.S.T. Calibration Certificate
LTC-7PN	Replacement battery for IRTC101A

ASK ABOUT
OUR OTHER
DATA
LOGGERS

Temperature
Humidity
Pressure
pH
Level
Shock
LCD Display
Pulse/Event/State
Current
Voltage
Wireless
Intrinsically Safe
Spectral Vibration
Motion