

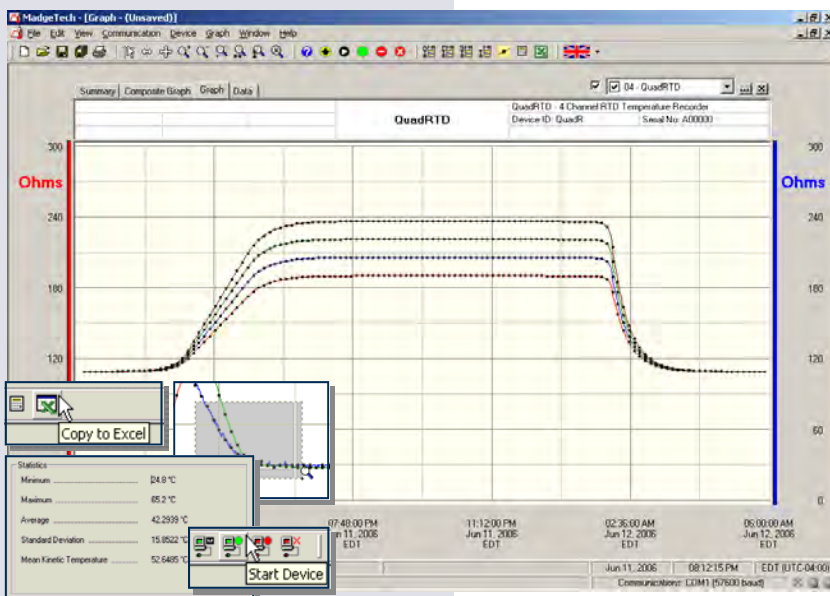
Features

- $\pm 0.1^{\circ}\text{C}$ Calibrated Accuracy
- N.I.S.T. traceable
- Real-time operation
- Low cost
- Programmable start time
- Reusable
- User-friendly
- CE compliant
- Accepts 2,3 and 4-wire RTD's

Applications

- Calibration chamber monitoring
- Process verification/validation
- Warehouse monitoring
- Precision temperature monitoring
- HVAC
- Clean rooms
- Medical/Pharmaceutical
- Museum monitoring
- Environmental studies
- Replace costly strip chart recorders
- Implement HACCP programs

The QuadRTD is a 4 channel, battery powered, stand alone, RTD based, precision temperature recorder. This is an all-in-one compact, portable, easy to use device that will measure and record up to 21,845 measurements per channel. The storage medium is non-volatile solid state memory, providing maximum data security even if the battery becomes discharged. The device can be started and stopped directly from your computer and its small size allows it to fit almost anywhere. The QuadRTD makes data retrieval quick and easy. Simply plug it into an empty COM or USB port and our user-friendly software does the rest.



Data Recorder Software

displays voltage data in an easy to use graph.

The Windows®-based software package allows the user to effortlessly collect, display and analyze data. A variety of powerful tools allow you to examine, export, and print professional looking data with just a click of the mouse.

QUADRTD SPECIFICATIONS*

Input Connection: 4 removable screw terminals

Temperature**
Model:
Measurement Range: -200 to +850°C
Resolution: 0.01°C
*****Calibrated Accuracy:** ±0.1 @ 25°C ambient
Specified Accuracy Range: -200 to +850°C
Input Connection: 4 removable screw terminals

Resistance
Model:
Nominal Range: 0 to 500Ω
Resolution: 0.001Ω
*****Calibrated Accuracy:**
 ±0.03Ω @ 25°C ambient
Specified Accuracy Range: 0 to 500Ω
Channels: 4
Input Connection: Removable screw terminal; 2,3 or 4 wire interface
Input Connection: Removable screw terminal; 2,3 or 4 wire interface
Input Connection: Removable screw terminal; 2,3 or 4 wire interface

Temperature Effect on Span: < 2.5ppm/°C; < 1.0ppm/°C typical

**Temperature specifications based on ideal 100 Ω Pt RTD compliant with IEC 751 (1983) and ITS-90, 5000 Ω FSR(accuracy based on 36" lead wire RTD with 4 wire configuration)
 ***Calibrated accuracies based on standard MadgeTech calibrations for 0 to 200Ω range.

Memory: 32,767 readings per channel (131,068 total memory)
Start Modes: Software programmable immediate start or delay start up to six months in advance

Real Time Recording: May be used with PC to monitor and record data in real time

Memory: 21,845 readings per channel for a total of 87380
Memory: 32,767 readings per channel (131,068 total memory)
Reading Rate: 1 reading every 2 seconds to 1 every 12 hours
Calibration: Digital calibration through software
Calibration Date: Automatically recorded within device
Battery Type: 9V lithium or alkaline battery included, **user replaceable**
Battery Life: 1 year typical
Data Format: Date and time stamped °C, °F, K, °R; Ω
Time Accuracy: ±1 minute/month (at 20°C, RS232 port not in use)

Computer Interface: PC serial or USB (interface cable required); 2,400 baud

Software: Windows 95/98/ME/NT/2000/XP/Vista based software

Operating Environment: -20 to +60°C, 0 to 95%RH non-condensing
Dimensions: 3.5" x 4.4" x 1.0" (89mm x 112mm x 26mm)
Weight: 11.9 oz (335 g)
Approvals: CE

BATTERY WARNING: DISCARD USED BATTERY PROMPTLY. KEEP OUT OF REACH OF CHILDREN. DO NOT DISPOSE OF IN FIRE, RECHARGE, PUT IN BACKWARDS, DISASSEMBLE OR MIX WITH OTHER BATTERY TYPES. MAY EXPLODE, FLAME OR LEAK AND CAUSE PERSONAL INJURY.

SOFTWARE FEATURES

Multiple Graphs: Simultaneously analyze data from several units or deployments; easily switch to a single data series	Statistics: Calculate averages, min, max, standard deviation, and mean kinetic temperature with the touch of a button
Graphical Cursor: One click displays readings by time, value, parameter or sample number	Export Data: Export data in a variety of common formats, or switch to Excel® with a single click
Data Table: Instantly access tabular view for detailed dates, times, values, and annotations	Calibration: Automatically calculate and store calibration parameters
Scaling Options: Autoscale function fits data to the screen, or allows user to manually enter their own values	Logger Configuration: Easy set up and launch of data loggers with immediate or delayed start, preferred sample rate, and device ID
Formatting Options: Change colors, line styles, plotting options, show or hide channels quickly	Communications: Automatically sets up communications port, or lets user select configuration

*SPECIFICATIONS ARE SUBJECT TO CHANGE WITHOUT NOTICE. SPECIFIC WARRANTY AND REMEDY LIMITATIONS APPLY.

ORDERING INFORMATION

Model	Description
QUADRTD	4 Channel RTD Temperature Recorder
IFC110	Software, manual and RS232 interface cable
IFC200	Software, manual and USB interface cable
NIST	N.I.S.T. Calibration Certificate
U9VL-J	Replacement battery for QuadRTD

ASK ABOUT OUR OTHER DATA RECORDERS

Temperature	Pulse/Event/State
Humidity	Low Level Current
Pressure	Low Level Voltage
pH	RF Transmitters
Level	Intrinsically Safe
Shock	Spectral Vibration
LCD Display	

info@logicbus.com.mx

www.logicbus.com.mx

Alcalde #1822 Col. Miraflores C.P. 44270 Guadalajara, Jal. Mexico
 MX 01 (33) 3854-5975 y 3823-4349 USA 001 (858)-869-5401 (Chula Vista, CA. Office)