

### Features

- Multiple transmitter configurations
- Memory wrap around
- Software configurable
- Real-time operation
- Programmable start time
- Miniature size
- User-friendly
- N.I.S.T. traceable

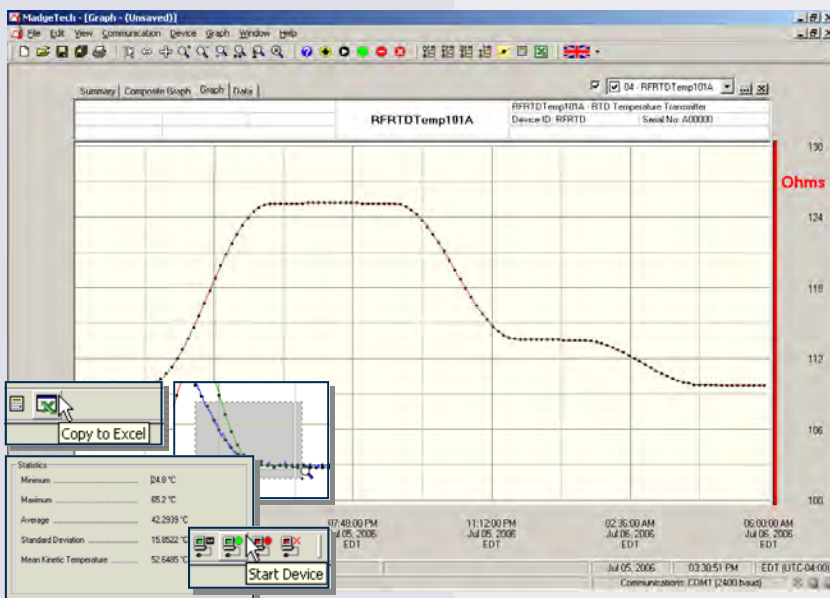
### Applications

- Calibration chamber monitoring
- Precision temperature recording
- Warehouse monitoring
- HVAC
- Medical and Pharmaceutical
- Museum monitoring
- Environmental studies
- Replace costly strip chart recorders



The RFRTDTemp101A is a battery powered precision temperature recorder and wireless transmitter. This is an all-in-one compact, portable, easy to use device that will measure and record up to 5,461 measurements. The RFRTDTemp101A combines the features from the standard product line and adds the convenience of a wireless transmitter. When enabled, the wireless transmitter will transmit readings back to the host computer where the data can be analyzed in real time. These readings are also logged to the device's memory for added data security. The convenient slide switch allows the transmitter to be turned on or off without affecting the operation of the device.

The device can be started, stopped and configured directly from your computer. Its small size allows it to fit almost anywhere. In addition to the wireless communications, the RFRTDTemp101A makes data retrieval quick and easy. Simply plug the device into an empty COM port and our user-friendly software will handle the rest.



### Data Recorder Software

displays voltage data in an easy to use graph.

The Windows®-based software package allows the user to effortlessly collect, display and analyze data. A variety of powerful tools allow you to examine, export, and print professional looking data with just a click of the mouse.

## RFRTDTEMP101A SPECIFICATIONS\*

<b>Input Connection:</b> 4 removable screw terminals	<b>Memory:</b> 32,767 readings per channel (131,068 total memory)
<b>Model:</b>	<b>Calibration:</b> Digital calibration through software
<b>Measurement Range:</b> -200 to +850°C	<b>Data Format:</b> Date and time stamped °C, °F, K, °R, Ω
<b>Resolution:</b> 0.01°C	<b>Time Accuracy:</b> ±1 minute/month (at 20 to 30°C)
<b>Calibrated Accuracy:</b> ±0.1°C	<b>Computer Interface:</b> PC serial or RS232C COM (interface cable required); 57,600 baud
<b>Specified Accuracy Range:</b> -200 to +850°C	<b>RF Baud Rate:</b> 4,800 baud
<b>Nominal Range:</b> 0 to 500Ω	<b>RF Carrier Frequency:</b> 418 ± 0.075MHz
<b>Resistance Resolution:</b> 0.001Ω	<b>Output Power:</b> <0dBm typical (<1mW)
<b>Calibrated Accuracy:</b> ±0.015Ω	<b>Receiver Sensitivity (RFC101A):</b> -90dBm typical
<b>Specified Accuracy Range:</b> 0 to 500Ω @ 25°C	<b>Range:</b> Line-of-sight: up to 120 ft., Urban: up to 40 ft.
<b>Input Connection:</b> Removable screw terminal; 2,3 or 4 wire interface	<b>Approvals:</b> US (FCC), CA (IC)
<b>Temperature Effect on Span:</b> <25ppm/°C; <10ppm/°C typical	<b>Battery Type:</b> 3.6V lithium battery included; <b>user replaceable</b>
<b>Temperature Effect on Offset:</b> <10ppm cumulative over -30 to +70 °C	<b>Battery Life:</b> 1 year typical (1 min reading rate @ 25 °C)
<b>Memory:</b> 5,461 readings; software configurable memory wrap	<b>Software:</b> Windows 95/98/ME/NT/2000/XP/Vista based software
<b>Reading Rate:</b> 1 reading every 30 seconds to 1 every 12 hours	<b>Operating Environment:</b> -30 to +70°C, 0 to 95%RH non-condensing
	<b>Dimensions:</b> 1.7" x 2.7" x 0.8" + 2.0" antenna (42mm x 69mm x 21mm + 51mm antenna)
	<b>Weight:</b> 2 oz (60 g)
	<b>Enclosure:</b> ABS plastic

\*\*Temperature specifications based on ideal 100 Ω Pt RTD compliant with IEC 751 (1983) and ITS-90, 5000Ω

**BATTERY WARNING:** FIRE, EXPLOSION, AND SEVERE BURN HAZARD. DO NOT RECHARGE, DISASSEMBLE, HEAT ABOVE 212°F, INCINERATE OR EXPOSE CONTENTS TO WATER.

## SOFTWARE FEATURES

<b>Multiple Graphs:</b> Simultaneously analyze data from several units or deployments; easily switch to a single data series	<b>Statistics:</b> Calculate averages, min, max, standard deviation, and mean kinetic temperature with the touch of a button
<b>Graphical Cursor:</b> One click displays readings by time, value, parameter or sample number	<b>Export Data:</b> Export data in a variety of common formats, or switch to Excel® with a single click
<b>Data Table:</b> Instantly access tabular view for detailed dates, times, values, and annotations	<b>Calibration:</b> Automatically calculate and store calibration parameters
<b>Scaling Options:</b> Autoscale function fits data to the screen, or allows user to manually enter their own values	<b>Logger Configuration:</b> Easy set up and launch of data loggers with immediate or delayed start, preferred sample rate, and device ID
<b>Formatting Options:</b> Change colors, line styles, plotting options, show or hide channels quickly	<b>Communications:</b> Automatically sets up communications port, or lets user select configuration

\*SPECIFICATIONS ARE SUBJECT TO CHANGE WITHOUT NOTICE. SPECIFIC WARRANTY AND REMEDY LIMITATIONS APPLY.

## ORDERING INFORMATION

Model	Description
RFRTDTEMP101A	Precision Temperature Recorder and Wireless Transmitter
RFC101A	Software, manual, wireless receiver, power supply and RS232 interface cable
RFC200A	Software, manual, wireless receiver, power supply and USB interface cable
NIST	N.I.S.T. Calibration Certificate
LTC-7PN	Replacement battery for RFRTDTemp101A

### ASK ABOUT OUR OTHER DATA RECORDERS

Temperature	Pulse/Event/State
Humidity	Low Level Current
Pressure	Low Level Voltage
pH	RF Transmitters
Level	Intrinsically Safe
Shock	Spectral Vibration
LCD Display	

For Quantity Discounts call 01-33 3854-5975 or email [ventas@logicbus.com.mx](mailto:ventas@logicbus.com.mx)

[info@logicbus.com.mx](mailto:info@logicbus.com.mx)

[www.logicbus.com.mx](http://www.logicbus.com.mx)

Alcalde #1822 Col. Miraflores C.P. 44270 Guadalajara, Jal. Mexico  
 MX 01 (33) 3854-5975 y 3823-4349 USA 001 (858)-869-5401 (Chula Vista, CA. Office)