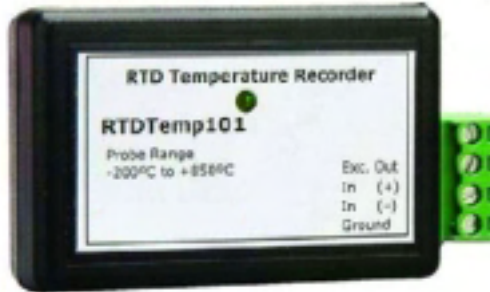


Features

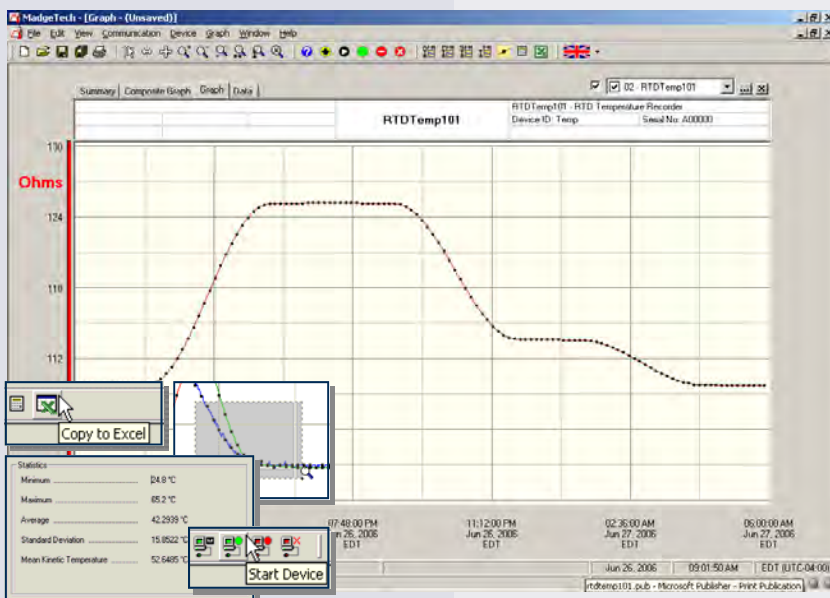
- N.I.S.T. traceable
- Real-time operation
- Low cost
- Programmable start time
- Reusable
- Miniature size
- User-friendly
- CE compliant



Applications

- Calibration chamber monitoring
- Warehouse monitoring
- HVAC
- Medical/Pharmaceutical
- Museum monitoring
- Environmental studies
- Replace costly strip chart recorders
- Implement HACCP programs
- Precision Temperature Recording

The RTDTemp101 is a miniature, battery powered, stand alone, precision temperature recorder. This is an all-in-one compact, portable, easy to use device will measure and record up to 21,845 measurements per channel. The storage medium is non-volatile solid state memory, providing maximum data security even if the battery becomes discharged. The RTD sensor does not suffer from the cold-junction issues of the thermocouple nor the errors at high and low temperatures of the thermistor. The device can be started and stopped directly from your computer and its small size allows it to fit almost anywhere. The RTDTemp101 makes data retrieval quick and easy. Simply plug it into an empty COM or USB port and our user-friendly software does the rest.



Data Recorder Software

displays voltage data in an easy to use graph.

The Windows®-based software package allows the user to effortlessly collect, display and analyze data. A variety of powerful tools allow you to examine, export, and print professional looking data with just a click of the mouse.

RTDTEMP101 SPECIFICATIONS*

Temperature**

Measurement Range: -200 to +850°C

Resolution: 0.01°C

***Calibrated Accuracy: ±0.05°C (-200 to +260°C)
±0.3°C (+260 to +850°C)

Resistance

Nominal Range: 0 to 500Ω

Resolution: 0.001Ω

***Calibrated Accuracy: ±0.015Ω (0 to 200Ω)
±0.015Ω + 0.015% of readings
(200 to 400°C)

Input Connection: Removable screw terminal; 2,3 or 4 wire interface

Temperature Effect on Span: < 25ppm/°C; < 10ppm/°C typical

Temperature Effect on Offset: <10ppm cumulative over -40 to +80°C

Start Modes: Software programmable immediate start or delay start up to six months in advance

Real Time Recording: May be used with PC to monitor and record data in real time

Memory: 21,845 readings

Reading Rate: 1 reading every 2 seconds to 1 every 12 hours

Calibration: Digital calibration through software

Calibration Date: Automatically recorded within device

Battery Type: 3.6V lithium battery included, **user replaceable**

Battery Life: 1 year typical (1 minute reading rate at 25°C)

Data Format: Date and time stamped °C, °F, K, °R, ohms

Time Accuracy: ±1 minute/month (at 20°C, RS232 Port not in use)

Computer Interface: PC serial or USB (interface cable required); 2,400 baud

Software: Windows 95/98/ME/NT/2000/XP/Vista based software

Operating Environment: -40 to +80°C, 0 to 95%RH non-condensing

Dimensions: 1.4" x 2.5" x 0.6" (36mm x 64mm x 16mm)

Weight: 1.0 oz (28 g)

Approvals CE

**Temperature specifications based on ideal 100Ω platinum RTD compliant with IEC 751 (1983) and ITS-90, 5000Ω (accuracy based on 36" lead wire RTD with 4 wire configuration)

BATTERY WARNING: FIRE, EXPLOSION, AND SEVERE BURN HAZARD. DO NOT RECHARGE, DISASSEMBLE, HEAT ABOVE 212°F INCINERATE OR EXPOSE CONTENTS TO WATER.

SOFTWARE FEATURES

Multiple Graphs: Simultaneously analyze data from several units or deployments; easily switch to a single data series

Graphical Cursor: One click displays readings by time, value, parameter or sample number

Data Table: Instantly access tabular view for detailed dates, times, values, and annotations

Scaling Options: Autoscale function fits data to the screen, or allows user to manually enter their own values

Formatting Options: Change colors, line styles, plotting options, show or hide channels quickly

Statistics: Calculate averages, min, max, standard deviation, and mean kinetic temperature with the touch of a button

Export Data: Export data in a variety of common formats, or switch to Excel® with a single click

Calibration: Automatically calculate and store calibration parameters

Logger Configuration: Easy set up and launch of data loggers with immediate or delayed start, preferred sample rate, and device ID

Communications: Automatically sets up communications port, or lets user select configuration

*SPECIFICATIONS ARE SUBJECT TO CHANGE WITHOUT NOTICE. SPECIFIC WARRANTY AND REMEDY LIMITATIONS APPLY.

ORDERING INFORMATION

Model	Description
RTDTEMP101	Precision Temperature Recorder
IFC110	Software, manual and RS232 interface cable
IFC200	Software, manual and USB interface cable
NIST	N.I.S.T. Calibration Certificate
LTC-7PN	Replacement battery for RTDTemp101

ASK ABOUT OUR OTHER DATA RECORDERS

Temperature	Pulse/Event/State
Humidity	Low Level Current
Pressure	Low Level Voltage
pH	RF Transmitters
Level	Intrinsically Safe
Shock	Spectral Vibration
LCD Display	

For Quantity Discounts call 01-33 3854-5975 or email ventas@logicbus.com.mx

info@logicbus.com.mx

www.logicbus.com.mx

Alcalde #1822 Col. Miraflores C.P. 44270 Guadalajara, Jal. Mexico
MX 01 (33) 3854-5975 y 3823-4349 USA 001 (858)-869-5401 (Chula Vista, CA. Office)

10.03.17