

# PRTEMP1000 RUGGED PRESSURE & TEMPERATURE DATA LOGGER



## Features

- Rugged
- Reusable
- Submersible
- Programmable start time
- Real-time operation
- User-friendly
- Low cost
- CE compliant

## Applications

- Pneumatics
- Process control systems
- Gas compressors
- Natural gas production
- Lubrication systems
- Chemical processing
- Pulp and paper processing
- Medical instrumentation
- Environmental studies
- Waste water treatment
- HVAC
- Oil & gas industries



The PRTemp1000 is a rugged pressure recorder to accurately monitor and record pressure and temperature at user programmable reading intervals. The rugged stainless steel design allows for the device to be placed in harsh environments, which makes it well suited for use with air conditioning systems, chilled water, hot water, air, gas, oil and steam pressure systems.

The internal temperature sensor provides accurate temperature measurements without the need for a separate temperature recorder. The logger can be started to take measurements as often as every two seconds, up to one reading every twelve hours. It will store up to 16,383 readings in its non-volatile memory.

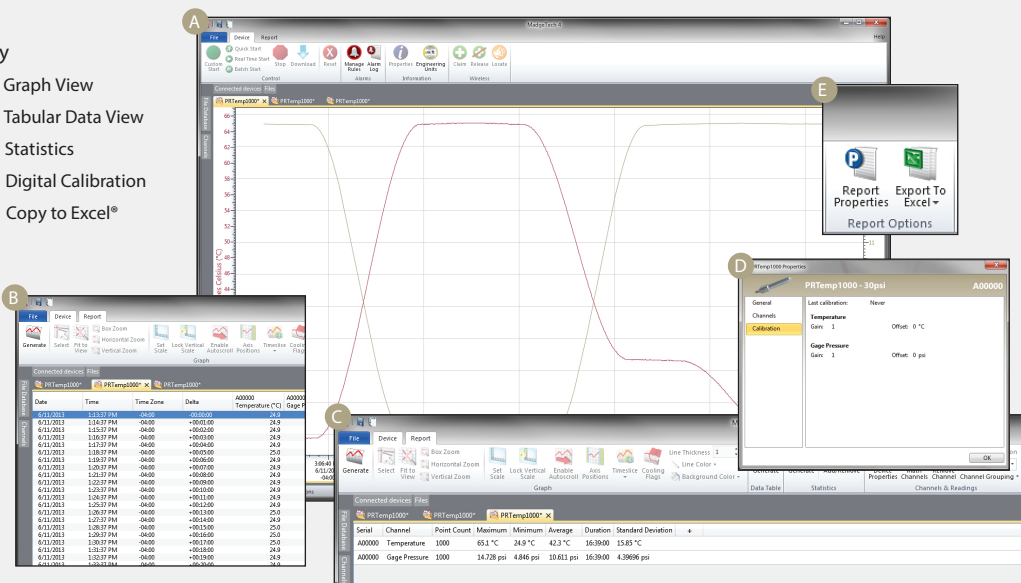
The PRTemp1000 uses a rugged stainless steel pressure strain gauge to accurately measure the pressure. The device comes standard with a 1/4 inch NPT fitting, which allows the logger to be connected to almost any pressure adapter. The PRTemp1000 is also fully submersible.

There are many different pressure ranges available to fit most any application. The standard pressure ranges are 30, 100, 300, 500 PSIA/PSIG, 1000 PSIA and 5000 PSIA.

## MADGETECH DATA LOGGER SOFTWARE

### Key

- A Graph View
- B Tabular Data View
- C Statistics
- D Digital Calibration
- E Copy to Excel®



### Software Features:

- Multiple graph overlay
- Statistics
- Digital calibration
- Zoom in/ zoom out
- Lethality equations (F0, PU)
- Mean Kinetic Temperature
- Full time zone support
- Data annotation
- Min./Max./Average lines
- Data table view
- Automatic report generation
- Summary view
- Multilingual

# PRTEMP1000 SPECIFICATIONS\*

\*Specifications are subject to change without notice. Specific warranty remedy limitations apply. Call (603) 456-2011 or go to madgetech.com for details.

Temperature Sensor:	Semiconductor
Temperature Range:	-40 °C to +80 °C (-40 °F to +176 °F)
Temperature Resolution:	0.1 °C (0.18 °F)
Calibrated Accuracy:	±0.5 °C (±0.9 °F)
Pressure Sensor:	Semiconductor strain gauge
Pressure Response Time:	0.1 ms (10 %FSR to 90 %FSR)
Repeatability:	±0.5 %FSR; ±0.2 % typical
Adaptor:	1/4 inch male NPT or submersible up to 60 PSI
Start Modes:	Software programmable immediate start or delay start up to six months in advance
Real Time Recording:	May be used with PC to monitor and record data in real time
Memory:	16,383 readings per channel, 32,766 total readings
Reading Rate:	1 reading every 2 seconds up to 1 reading every 12 hours

Calibration:	Digital calibration through software
Calibration Date:	Automatically recorded within device
Battery Type:	3.6V lithium battery included; user replaceable
Battery Life:	1 year typical
Data Format:	Date and time stamped °C, °F, K, °R ; PSIA(g), inches, feet, mmHg, bar, Torr, kPa,
Time Accuracy:	±1 minute/month (at 20 °C)
Computer Interface:	PC USB (interface cable required); 2,400 baud
Software:	Windows XP SP3 or later
Operating Environment:	-40 °C to +80 °C (-40 °F to +176 °F), 0 %RH to 100 %RH
Dimensions:	6.4 in x 1.25 in (163 mm x 32 mm)
Weight:	12 oz (340 g)
Material:	303 Stainless Steel
Approvals:	CE

Range:	0-30 PSIA/PSIG	0-100 PSIA/PSIG	0-300 PSIA/PSIG	0-500 PSIA/PSIG	0-1000 PSIA	0-5000 PSIA
Accuracy:	2 %FSR, 0.25 % @ 25 °C typical					
Resolution (PSI):	0.002	0.005	0.02	0.05	0.05	0.2

**BATTERY WARNING:** WARNING: FIRE OR EXPLOSION RISK, DO NOT CHARGE, OPEN, HEAT OR DISPOSE OF IN FIRE.

## ORDERING INFORMATION

MODEL	PART NUMBER	DESCRIPTION
PRTEMP1000-30 PSIA	901145-00	0-30 PSIA Pressure and Temperature Recorder
PRTEMP1000-30 PSIG	901149-00	0-30 PSIG Pressure and Temperature Recorder
PRTEMP1000-100 PSIA	901122-00	0-100 PSIA Pressure and Temperature Recorder
PRTEMP1000-100 PSIG	901126-00	0-100 PSIG Pressure and Temperature Recorder
PRTEMP1000-300 PSIA	901136-00	0-300 PSIA Pressure and Temperature Recorder
PRTEMP1000-300 PSIG	901140-00	0-300 PSIG Pressure and Temperature Recorder
PRTEMP1000-500 PSIA	901157-00	0-500 PSIA Pressure and Temperature Recorder
PRTEMP1000-500 PSIG	901161-00	0-500 PSIG Pressure and Temperature Recorder
PRTEMP1000-1000 PSIA	901118-00	0-1000 PSIA Pressure and Temperature Recorder
PRTEMP1000-5000 PSIA	901153-00	0-5000 PSIA Pressure and Temperature Recorder
IFC200	900298-00	Software, manual and USB interface cable
TLH-5902	901747-00	Replacement battery for PRTemp1000

**ASK ABOUT OUR OTHER DATA LOGGERS**

- Temperature
- Humidity
- Pressure
- pH
- Level
- Shock
- LCD Display
- Pulse/Event/State
- Current
- Voltage
- Wireless
- Intrinsically Safe
- Spectral Vibration
- Motion