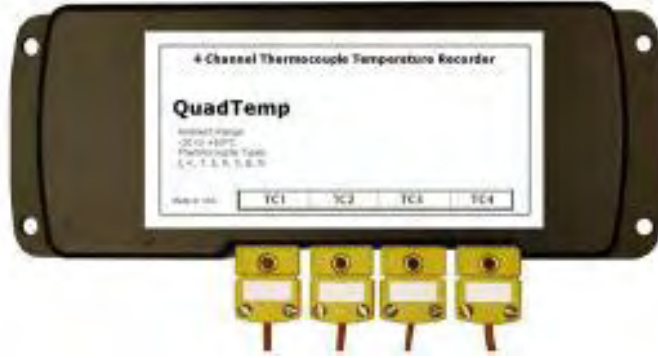


Features

- 4Hz reading rate
- 500,000 readings per channel
- Open channel detection
- Title channels
- Accepts thermocouple types J, K, T, E, R, S, B, N
- External power or user replaceable battery
- Pushbutton or programmable start

Applications

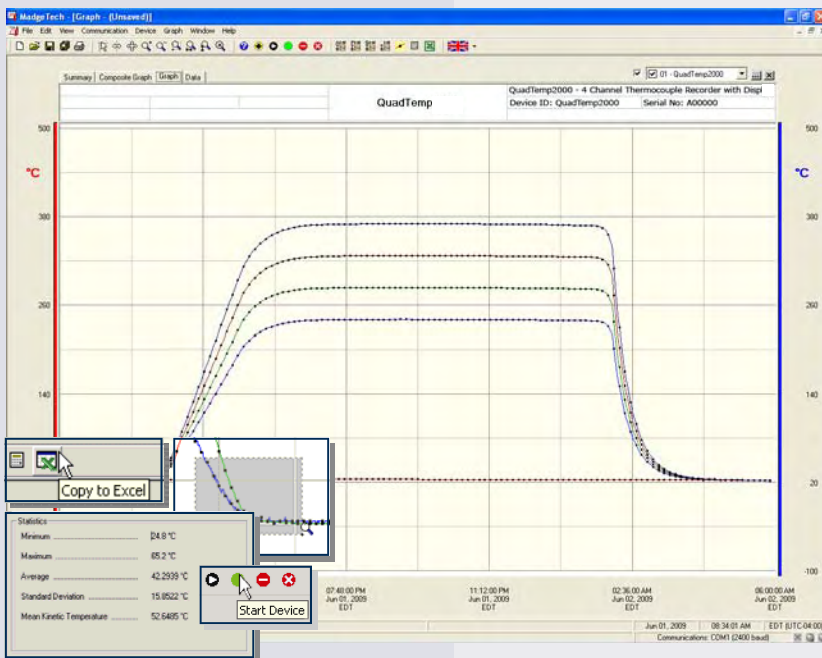
- Warehouse monitoring
- Refrigerator monitoring
- Medical and Pharmaceutical
- Oven monitoring
- Smoke houses
- Food Processing
- HVAC
- Engine Studies



The QuadTemp is a four channel thermocouple data logger with a reading rate of up to 4Hz. It can measure and record 500,000 readings per channel. To maximize memory capacity, users can enable or disable channels. For easy identification, each channel can be named with up to a ten digit title.

In addition, the QuadTemp features individual cold junction compensation for each channel providing increased accuracy and response time, and if a probe is removed or severed during logging, the software automatically annotates the data.

The QuadTemp is ideal for a variety of applications, whether it is remote temperature monitoring, or multiple points in a central location. Data from all channels is simultaneously logged. After the monitoring cycle is complete, data can be downloaded for analysis.


Data Recorder Software

displays temperature data in an easy to use graph.

The Windows®-based software package allows the user to effortlessly collect, display and analyze data. A variety of powerful tools allow you to examine, export, and print professional looking data with just a click of the mouse.

QUADTEMP SPECIFICATIONS*

Internal Channel

Temperature Range: -20 to +60°C

Temperature Resolution: 0.05°C

Calibrated Accuracy: ±0.5°C (0 to +50°C)

4 Remote Channels

Remote Channel

Thermocouple Types: J, K, T, E, R, S, B, N

Thermocouple connection: Female subminiature (SMP)

Cold Junction Compensation: Automatic, based on internal channel

Maximum Thermocouple Resistance: 1000Ω, <100Ω recommended

| Thermocouple | Range (°C) | Resolution | Accuracy |
|--------------|---------------|------------|----------|
| J | -210 to +760 | 0.1 °C | ±0.5 °C |
| K | -260 to +1370 | 0.1 °C | ±0.5 °C |
| T | -260 to +400 | 0.1 °C | ±0.5 °C |
| E | -260 to +980 | 0.1 °C | ±0.5 °C |
| R | -50 to +1760 | 0.5 °C | ±2.0 °C |
| S | -50 to +1760 | 0.5 °C | ±2.0 °C |
| B | +60 to +1820 | 0.5 °C | ±2.0 °C |
| N | -260 to +1300 | 0.1 °C | ±0.5 °C |

Start Modes: Software programmable immediate start or delay start up to six months in advance

Real Time Recording: May be used with PC to monitor and record data in real time

Memory: 500,000 readings per channel, channels can be disabled to increase memory

Reading Rate: 4 readings per second up to 1 every 24 hours

Calibration: Digital calibration through software

Calibration Date: Automatically recorded within device

Battery Type: 9 Volt lithium or alkaline battery included, **user replaceable**

Battery Life: 18 months typical

Data Format: Date and time stamped °C, °F, K, °R, mV, V

Time Accuracy: ±1 minute/month

Computer Interface: PC serial or USB (Interface cable required); 115,200 baud

Software: Windows 95/98/ME/NT/2000/XP/Vista software

Operating Environment: -20 to +60°C, 0 to 95%RH non-condensing

Dimensions: 7.24" x 2.7" x 1.02" (183mm x 68mm x 26mm)

Material: Black anodized aluminum

Weight: 15.2 oz (430 g)

Approvals: CE Pending

BATTERY WARNING: DISCARD USED BATTERY PROMPTLY. KEEP OUT OF REACH OF CHILDREN. DO NOT DISPOSE OF IN FIRE, RECHARGE, PUT IN BACKWARDS, DISASSEMBLE, OR MIX WITH OTHER BATTERY TYPES. MAY EXPLODE, FLAME, OR LEAK AND CAUSE PERSONAL INJURY.

SOFTWARE FEATURES

Multiple Graphs: Simultaneously analyze data from several units or deployments; easily switch to a single data series

Graphical Cursor: One click displays readings by time, value, parameter or sample number

Data Table: Instantly access tabular view for detailed dates, times, values, and annotations

Scaling Options: Autoscale function fits data to the screen, or allows user to manually enter their own values

Formatting Options: Change colors, line styles, plotting options, show or hide channels quickly

Statistics: Calculate averages, min, max, standard deviation, and mean kinetic temperature with the touch of a button

Export Data: Export data in a variety of common formats, or switch to Excel® with a single click

Calibration: Automatically calculate and store calibration parameters

Logger Configuration: Easy set up and launch of data loggers with immediate or delayed start, preferred sample rate, and device ID

Communications: Automatically sets up communications port, or lets user select configuration

*SPECIFICATIONS ARE SUBJECT TO CHANGE WITHOUT NOTICE. SPECIFIC WARRANTY AND REMEDY LIMITATIONS APPLY.

ORDERING INFORMATION

| Model | Description |
|----------|--|
| QUADTEMP | 4 Channel Thermocouple Recorder |
| IFC110 | Software, manual and RS232 interface cable |
| IFC200 | Software, manual and USB interface cable |
| NIST | N.I.S.T. Calibration Certificate |
| U9VL-J | Replacement battery for QuadTemp |

ASK ABOUT OUR OTHER DATA RECORDERS

| | |
|-------------|--------------------|
| Temperature | Pulse/Event/State |
| Humidity | Low Level Current |
| Pressure | Low Level Voltage |
| pH | RF Transmitters |
| Level | Intrinsically Safe |
| Shock | Spectral Vibration |
| LCD Display | |

info@logicbus.com.mx

www.logicbus.com.mx

Alcalde #1822 Col. Miraflores C.P. 44270 Guadalajara, Jal. Mexico
MX 01 (33) 3854-5975 y 3823-4349 USA 001 (858)-869-5401 (Chula Vista, CA. Office)