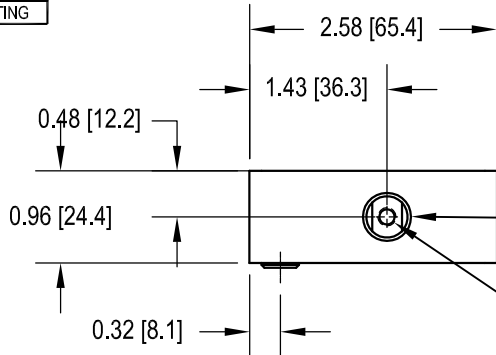
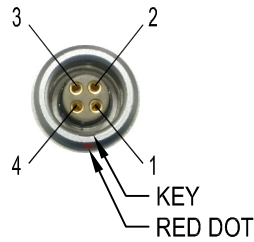


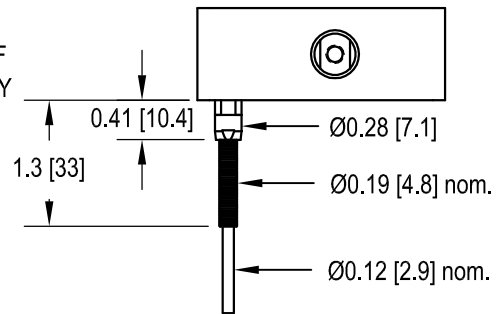
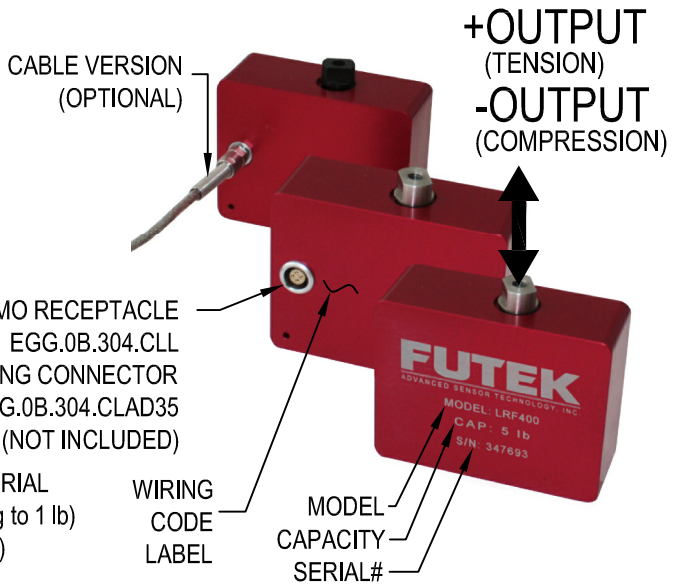
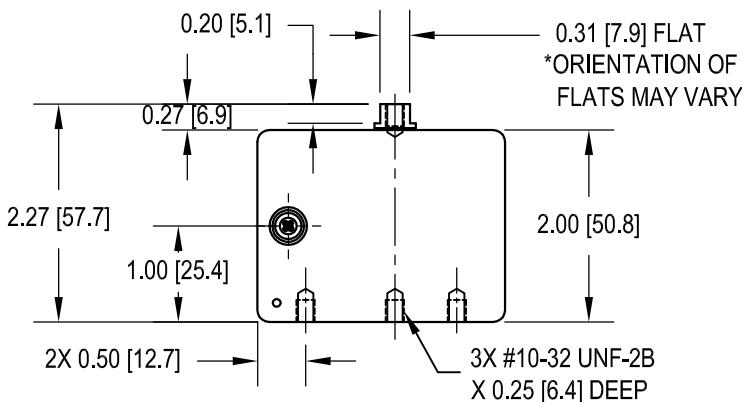
LRF400 (L2338)

TENSION AND COMPRESSION IN LINE LOAD CELL W/ OVERLOAD PROTECTION

Drawing Number: FI1040-C			
INCH [mm] R.O.= Rated Output			
CONNECTOR CODE (CC4)			
+Excitation	-Excitation	+Signal	-Signal
PIN 1	PIN 4	PIN 2	PIN 3
CABLE WIRING CODE (WC1)			
+Excitation	-Excitation	+Signal	-Signal
RED	BLACK	GREEN	WHITE
Shield			
FLOATING			



ADAPTER MATERIAL
ALUMINUM (10 g to 1 lb)
S.S.(2.2 to 100 lb)
#10-32 UNF-2B
X 0.38 [9.7] DEEP



SPECIFICATIONS:

RATED OUTPUT 2 mV/V nom., 1 mV/V nom. (10 g)
ZERO BALANCE ** ±1% of R.O. (10 to 100 lb), ±3% of R.O. (10 g to 5 lb)
EXCITATION (VDC OR VAC) 18 max., 5 max (10 g)
BRIDGE RESISTANCE 1000 Ω nom.
NONLINEARITY ±0.05% of R.O., ±0.1% of R.O. (10 g)
HYSTERESIS ±0.05% of R.O., ±0.1% of R.O. (10 g)
NONREPEATABILITY ±0.05% of R.O., ±0.1% of R.O. (10 g)
CREEP ±0.05% of LOAD, ±0.2% of LOAD (10 g)
TEMP. SHIFT ZERO ±0.005% of R.O./°F [0.01% of R.O./°C]
TEMP. SHIFT SPAN ±0.005% of LOAD/°F [0.01% of LOAD/°C]
COMPENSATED TEMP. 60 to 160°F [15 to 72°C]
OPERATING TEMP. -60 to 200°F [-50 to 93°C]
WEIGHT 5 oz [140 g]
DEFLECTION 0.003 to 0.011 [0.07 to 0.28] nom.
CONNECTOR: 4 Pin LEMO Receptacle (EGG.0B.304.CLL)
CABLE: #28 AWG, 4 CONDUCTOR BRAIDED SHIELDED PVC CABLE, 10 ft [3 m] (OPTIONAL)
ACCESSORIES AND RELATED INSTRUMENTS AVAILABLE
CALIBRATION (STD) 5 pt COMPRESSION; 150K Ω SHUNT CAL. VALUE
CALIBRATION (AVAILABLE) TENSION
CALIBRATION TEST EXCITATION 10 VDC, 5 VDC (10g)
**** ZERO BALANCE BASED ON SENSOR ORIENTED W/ S/N: FACING DOWN.**
MATERIAL ALUMINUM, RED ANODIZE (HOUSING) AFTER S/N:347692

ITEM #	Capacity (lb)	Capacity (N)	Safe Overload (lb)
FSH01570	10 g	0.1	5
FSH00259	0.25	1.1	50
FSH00260	0.50	2.2	50
FSH00261	1	4.5	50
FSH00262	2.2	9.8	250
FSH00263	5	22.2	250
FSH00264	10	44.5	250
FSH00265	25	111	250
FSH00266	50	222	250
FSH00267	100	445	250