

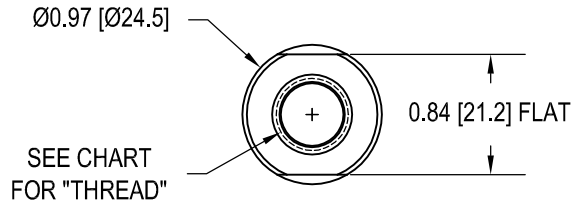
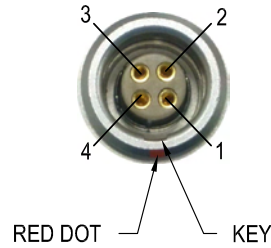
PRESSURE SENSOR WITH LEMO CONNECTOR

Drawing Number: FI1158-B
INCH [mm] | R.O.= Rated Output
WIRING CODE (CC4)

+Excitation	-Excitation	+Signal	-Signal
PIN 1	PIN 4	PIN 2	PIN 3

Cable Option
WIRING CODE (CC1)

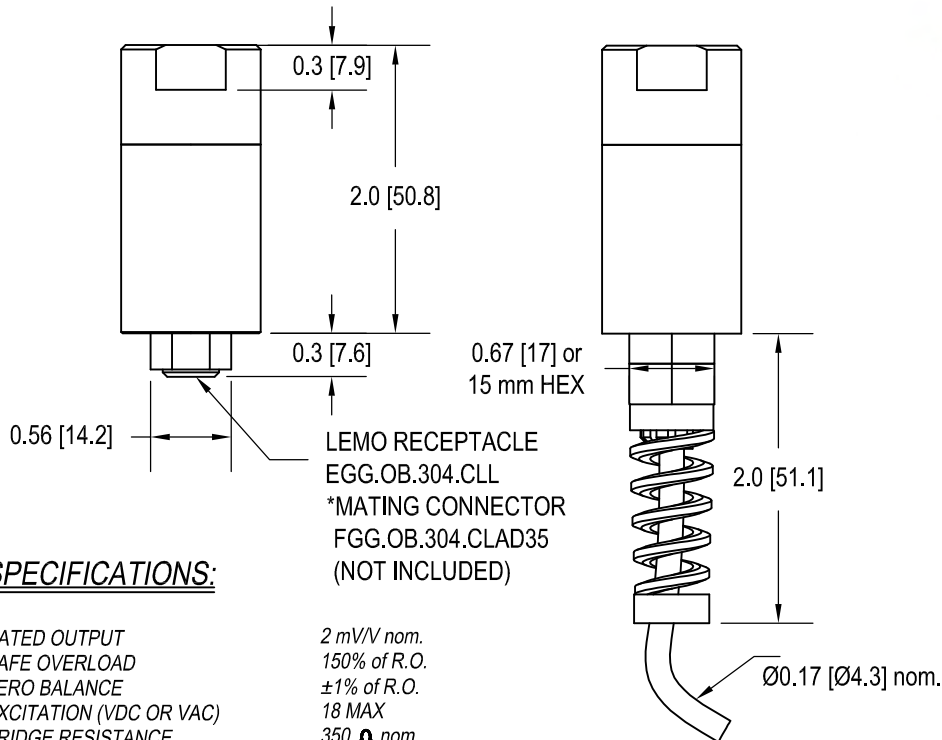
+Excitation	-Excitation	+Signal	-Signal
RED	BLACK	GREEN	WHITE
+SENSE	-SENSE	Shield	
ORANGE	BLUE	FLOATING	



FUTEK LABEL



S/N:


 LEMO RECEPTACLE
 EGG.OB.304.CLL
 *MATING CONNECTOR
 FGG.OB.304.CLAD35
 (NOT INCLUDED)

SPECIFICATIONS:

RATED OUTPUT	2 mV/V nom.
SAFE OVERLOAD	150% of R.O.
ZERO BALANCE	±1% of R.O.
EXCITATION (VDC OR VAC)	18 MAX
BRIDGE RESISTANCE	350 Ω nom.
NONLINEARITY	±0.5% of R.O.
HYSTERESIS	±0.5% of R.O.
NONREPEATABILITY	±0.1% of R.O.
TEMP. SHIFT ZERO	±0.02% of R.O./°F [0.036% of R.O./°C]
TEMP. SHIFT SPAN	±0.02% of LOAD/°F [0.036% of LOAD/°C]
COMPENSATED TEMP.	60 to 160°F [15 to 72°C]
OPERATING TEMP.	-60 to 250°F [-50 to 121°C]
WEIGHT	4.5 oz [128 g]
MATERIAL	17-4PH S.S.
CONNECTOR:	4 Pin LEMO Receptacle (EGG.OB.304.CLL)
CABLE (AVAILABLE OPTION):	#28 AWG, 6 Conductor, Spiral Shielded Polyurethane Cable 3 ft [1 m] Long
ACCESSORIES AND RELATED INSTRUMENTS AVAILABLE	
CALIBRATION (INCLUDED)	2pt. (5pt. AVAILABLE) 60.4K Ω SHUNT CAL. VALUE.
CALIBRATION TEST EXCITATION	10 VDC

ITEM#	CAPACITIES		
	PSI	BAR	THREAD
FSH00821	300	20.7	1/4-18 NPT
FSH03368			7/16-20
FSH00823	500	34.5	1/4-18 NPT
FSH03370			7/16-20
FSH00825	1000	69.0	1/4-18 NPT
FSH03372			7/16-20
FSH00827	3000	206.8	1/4-18 NPT
FSH00829			
FSH00831	7500	517.1	
FSH00833	10000	689.5	

**CONTACT FACTORY FOR CABLE OPTION