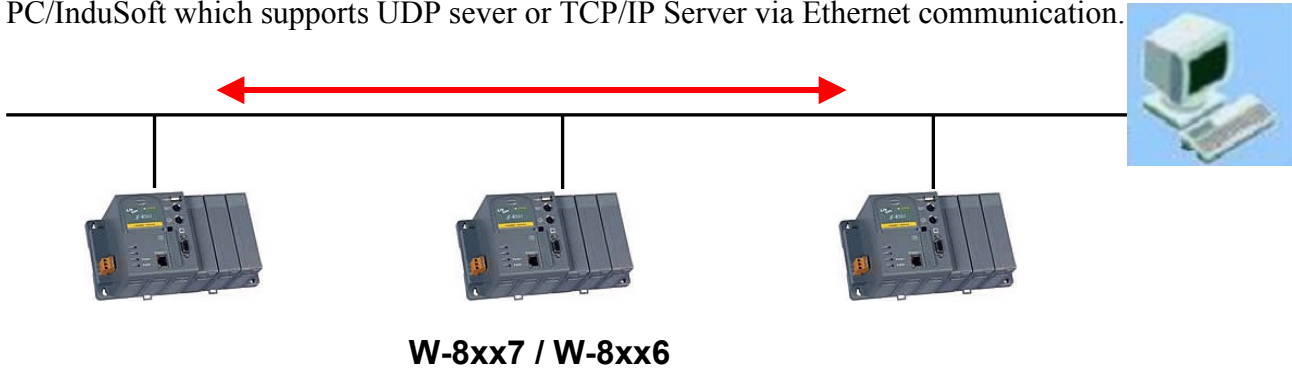
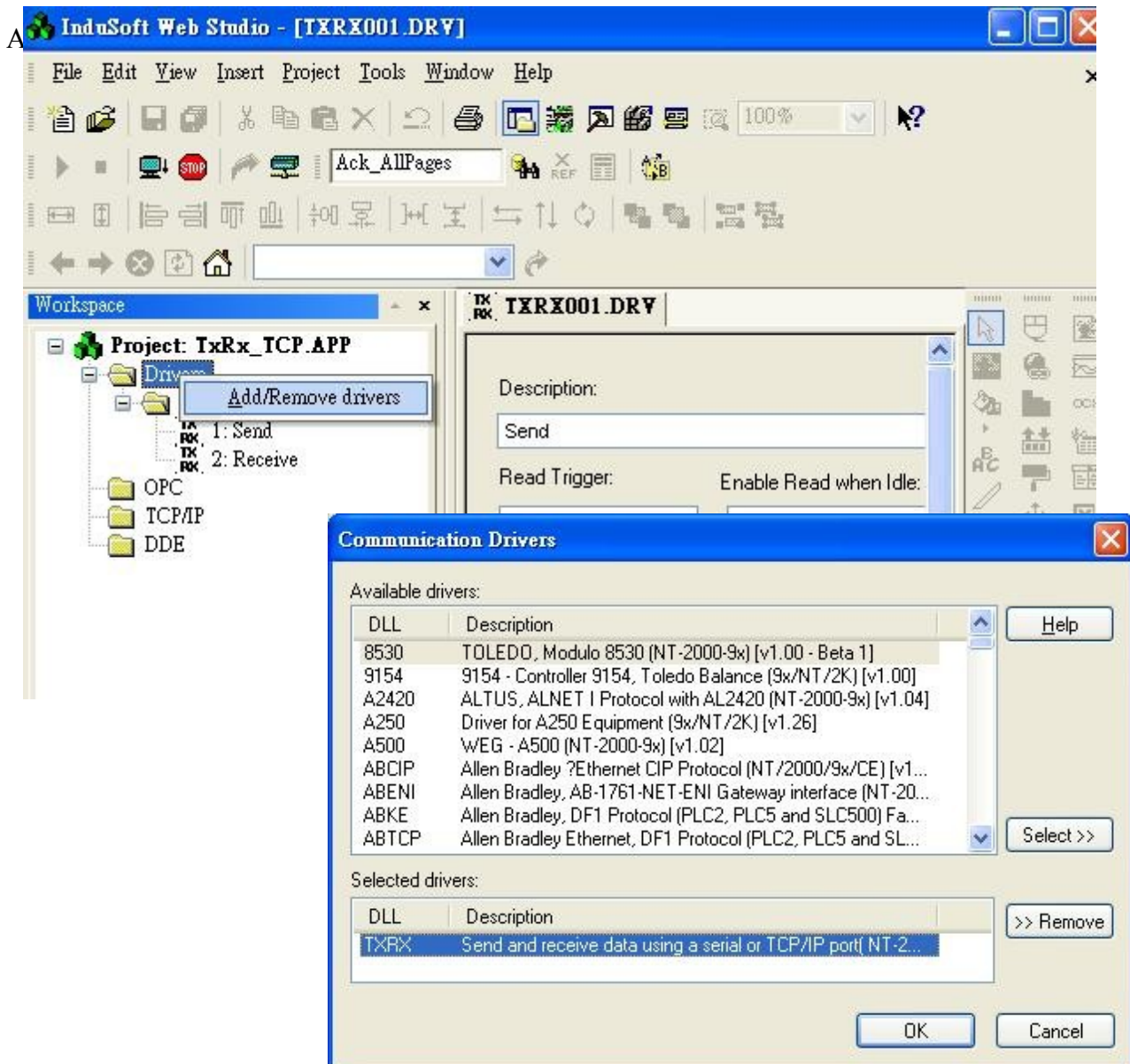


## Wincon-8xx7 automatically report data to PC/InduSoft

Wincon-8xx7 / 8xx6 supports UDP Client & TCP/IP Client that can send message to PC/HMI or PC/InduSoft which supports UDP sever or TCP/IP Server via Ethernet communication.



Below lists a InduSoft & IsaGRAF demo project using this feature.



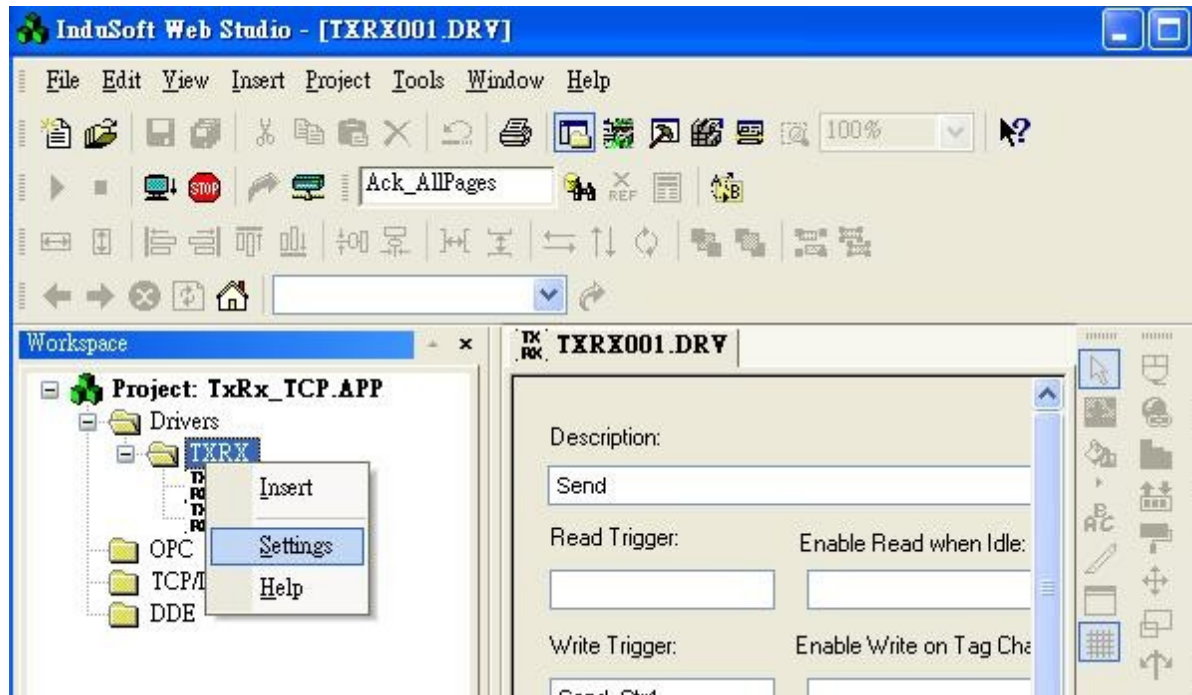
The screenshot shows the InduSoft Web Studio interface. The main workspace displays a project tree for 'Project: TxRx\_TCP.APP' with folders for 'Drivers', 'OPC', 'TCP/IP', and 'DDE'. The 'Drivers' folder is expanded, showing 'Add/Remove drivers' and two entries: '1: Send' and '2: Receive'. The 'Communication Drivers' dialog box is open, showing a list of available drivers and the selected 'TXRX' driver.

DLL	Description
8530	TOLEDO, Modulo 8530 (NT-2000-9x) [v1.00 - Beta 1]
9154	9154 - Controller 9154, Toledo Balance (9x/NT/2K) [v1.00]
A2420	ALTUS, ALNET I Protocol with AL2420 (NT-2000-9x) [v1.04]
A250	Driver for A250 Equipment (9x/NT/2K) [v1.26]
A500	WEG - A500 (NT-2000-9x) [v1.02]
ABCIP	Allen Bradley ?Ethernet CIP Protocol (NT/2000/9x/CE) [v1...
ABENI	Allen Bradley, AB-1761-NET-ENI Gateway interface (NT-20...
ABKE	Allen Bradley, DF1 Protocol (PLC2, PLC5 and SLC500) Fa...
ABTCP	Allen Bradley Ethernet, DF1 Protocol (PLC2, PLC5 and SL...

DLL	Description
TXRX	Send and receive data using a serial or TCP/IP port( NT-2...

## Settings in the TXRX

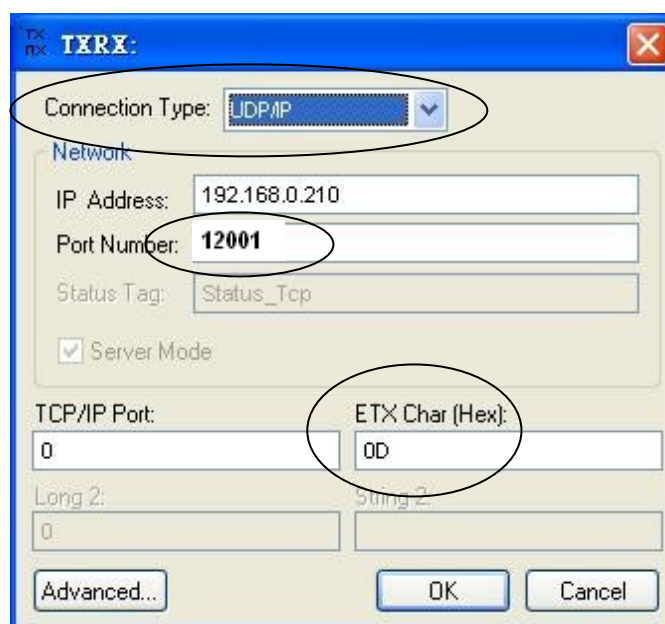


Connection Type should be “UDP/IP”

Port Number should be set to “**12001**” if wishing to receive message reporting from W-8xx7.

The “IP Address” is not necessary when “RXTX” is for receiving message from W-8xx7. It is for sending message out by Indusoft.

The ETX is the Char at the end of a message to be check as a valid message by TXRX. Setting as 0D means <Enter> char.



Please update Wincon ISaGRAF driver to version of “3.29” or higher version.

The “udp\_ip” is to setup a udp\_ip server & client in the W-8xx7

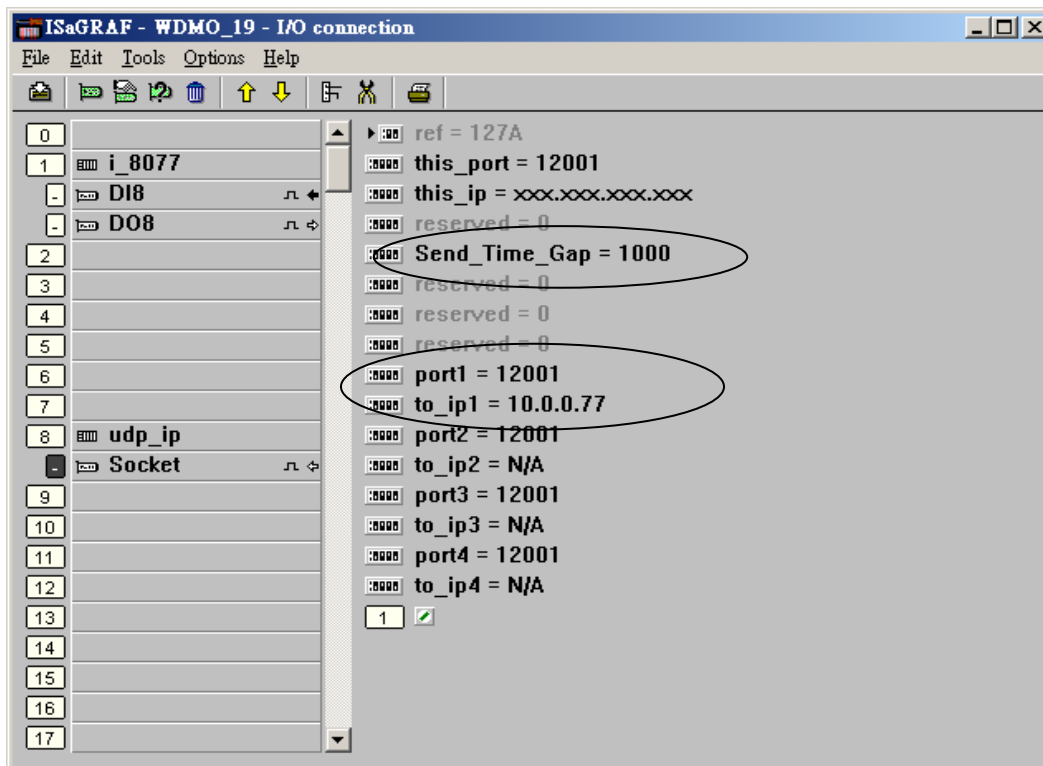
port1 & to\_ip1 should be set to correct value if using 1<sup>st</sup> connection to send message to InsuSoft's “TXRX” or other udp\_ip server.

The “Send\_Time\_Gap” should be  $\geq 1000$  ms when sending message to InDuSoft.

(\* “Send\_Time\_Gap” setting is important in the IO connection - “udp\_ip” , some HMI or devices can not accept message sent too frequent.

Send\_Time\_Gap : 10 ~ 5000 . Time gap between two sending message. Unit is ms.

For example, setting as 250, when ISaGRAF program call “udp\_send” to send many message at almost the same time, these message will be sent out one by one every 250 ms past until all message is sending over. \*)



How to Test ?

1. Run the InduSoft Demo Project “TxRx\_TCP\_Server.zip” on a PC with InduSoft installed.
2. Download the “Wdmo\_19” IsaGRAF project to a Wincon-8xx7 with driver version 3.29 or higher.
3. Plug all ethernet cable well.
4. Switch one of i-8077's DI 0 to 7 from OFF to ON, InduSoft should receive the message sent by W-8xx7. If not, please check the IP & port setting is correct or not.