



This intelligent controller, adopting function block programming, having large programming capacity, being freely programmed according to different users and different fields, can run at your desired time table and the RTC accuracy can reach second and makes your time control be more accurate. And 128 time sessions can be set mostly, especially suitable for time-control system. Safety password function makes your program be absolutely safe. Before writing program, password can be set. And only after entering the correct password, the program can be modified.

It is equipped with a freely removable, convenient and programmable LCD, providing 64 friendly human-machine interfaces, 32 virtual keys, having the function to display the alarming message and parameter and to modify the parameter. When needed, it can be installed. And when not needed, it can be removed and replaced with an ordinary front panel. Thus the cost will be greatly reduced.

The input can receive not only the digital input but also the analogue input to perform the control and transmission of the temperature, moisture, pressure, flow level unit and so on. It has well-featured and compact design with 14 point input and 8point output, Equipped with expansion module, it can be better expanded into 82 I/O and expanded MAX.122I/O. It can be connected with telephone voice module and remote control module to perform the notification, and alarming function. And the connection between the machine and the module can be Bridge SR-CBA or flexible connection SR-ECBA. The function is safer and superior.

The machine has short-circuit protection (internal) and relay output protection (external) function, which makes your usage safer and easier.

Free SR programming and monitoring software, makes you program freely on your PC. When SR software is updated, you can download from the internet freely.

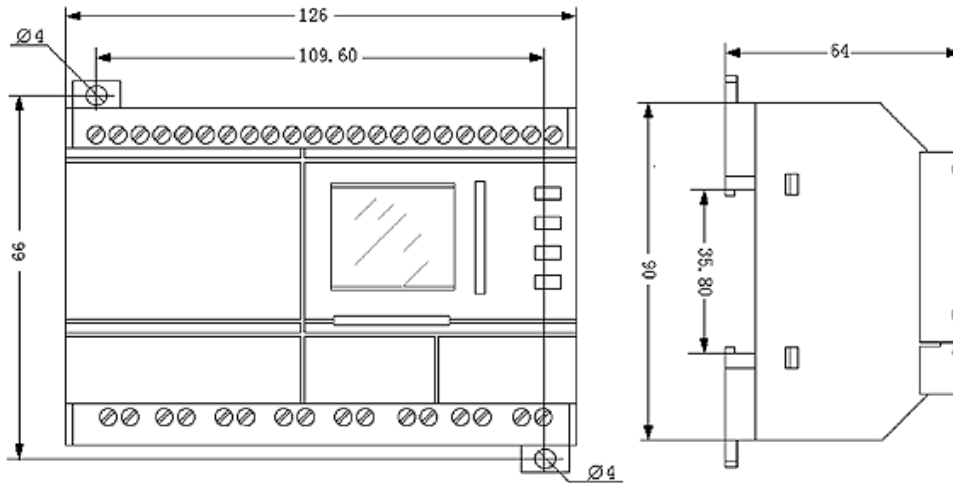
The product is has a delicate and compact appearance and with highly integrated design, making your work more convenient.

Technical Specifications

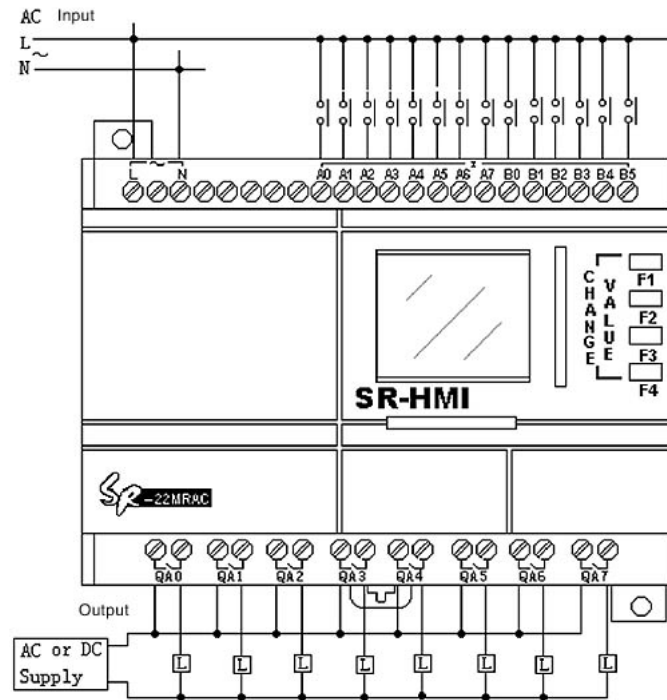
Parameter \ Type	LBSR-1322MRAC	LBSR-1322MRDC	LBSR-1322MTDC	LBSR-1322MGDC
Power	AC 110V ~ 240V	DC 12V ~ 24V	DC 12V ~ 24V	DC 12V ~ 24V
Input Parameter:				
Input No.	14 (A0~A7,B0~B5)	14 (A0~A7,B0~B5)	14 (A0~A7,B0~B5)	14 (A0~A7,B0~B5)
Digital Input No.	14 (A0~A7,B0~B5)	14 (A0~A7,B0~B5)	14 (A0~A7,B0~B5)	14 (A0~A7,B0~B5)
Analog Input No.	None	8 (A0~A7)	8 (A0~A7)	8 (A0~A7)
Power Range	AC 0V~240V	DC 0V~24V (Digital)	DC 0V~24V (Digital)	DC 0V~24V (Digital)
		DC 0V~10V (Analog)	DC 0V~10V (Analog)	DC 0V~10V (Analog)
Input Signal 0	AC 0V~40V	DC 0V~5V	DC 0V~5V	DC 0V~5V
Input Signal 1	AC 85V~240V	DC 10V~24V	DC 10V~24V	DC 10V~24V
Lapse Time From 0 to 1	50ms	50ms	50ms	50ms
Lapse Time From 1 to 0	50ms	50ms	50ms	50ms
Output Parameter:				
Output No.	8 (QA0~QA7)	8 (QA0~QA7)	8 (QA0~QA7)	8 (QA0~QA7)
Output Type	Relay Output	Relay Output	Transistor (Equivalent NPN) Output)	Transistor (Equivalent NPN) Output)
Output Voltage	AC 0V~240V	AC 0V~240V	DC 0V~24V	DC 0V~24V
	DC 0V~24V	DC 0V~24V		
Output current	Resistor Load 10A	Resistor Load 10A	2A	2A
	Inductive Load 2A	Inductive Load 2A		
Response time form 1 to 0	8ms	8ms	8ms	8ms
Response time form 0 to 1	10ms	10ms	10ms	10ms
Enviromon Temperature:				
Running Temperature	0°C ~ 55°C			
Storage/Shipment	-40°C ~ +70°C			
Switch Frequency:				
Mechanism	10Hz			
Resistor/Light Load	2Hz			
Sensitive Load	0.5Hz			
Fixation	Use a standard 35mm DIN rail or screw for installation			
Other Parameter:				
Clock Buffer Memory At 25°C	80h			
RTC Accuracy	MAX ±5S/Day			
Protection	IP20			
Emission On Line	EN55011 (B)			

Installation and Wiring

Installation Dimensions (mm): Top hat rail Din TS 35mm or screw fixing 2XM3 (diameter of pitch circle 4.00mm)



Wiring of the input & output:



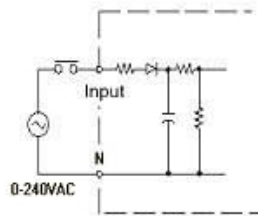
info@logicbus.com.mx

www.logicbus.com.mx

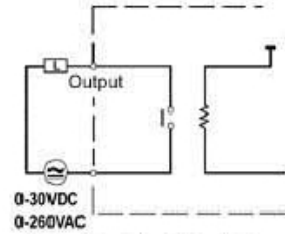
Alcalde # 1822 Col. Miraflores C.P. 44270 Guadalajara, Jal. Mexico
 MX 01 (33) 3854-5975 y 3823-4349 USA 001 (619)- 884-94-93 (San Diego, CA. Office)

Input & Output Equivalent Circuit Diagram:

SR-22MRAC Input/Output Equivalent Circuit Diagram

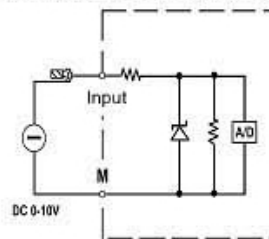


Input Equivalent Circuit Diagram

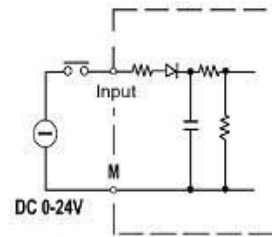


Output Equivalent Circuit Diagram

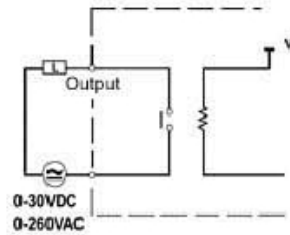
SR-22MRDC Input/Output Equivalent Circuit Diagram



Analogue Input Equivalent Circuit Diagram

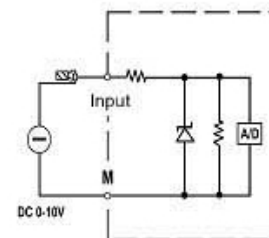


Digital Input Equivalent Circuit Diagram

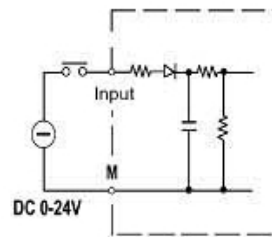


Output Equivalent Circuit Diagram

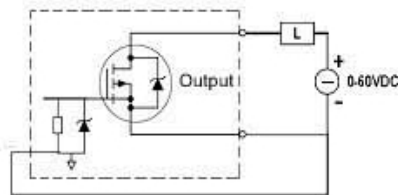
SR-22MTDC Input/Output Equivalent Circuit Diagram



Analogue Input Equivalent Circuit Diagram



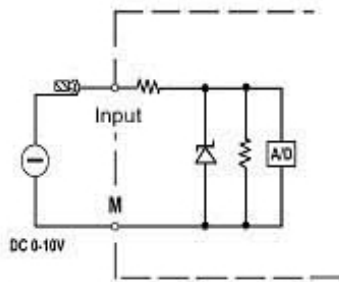
Digital Input Equivalent Circuit Diagram



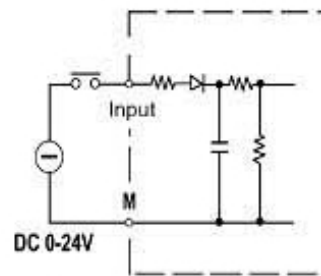
Transistor (NPN) Output Equivalent Circuit Diagram

Input & Output Equivalent Circuit Diagram:

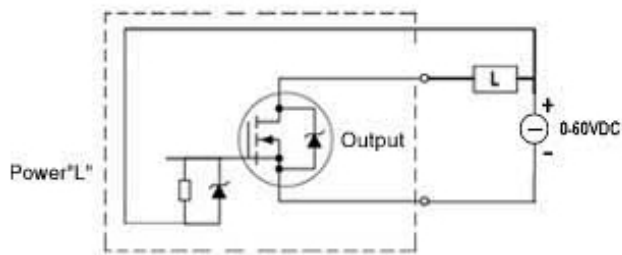
SR-22MGDC Input/Output Equivalent Circuit Diagram



Analogue Input Equivalent Circuit Diagram



Digital Input Equivalent Circuit Diagram



Transistor (PNP) Output Equivalent Circuit Diagram

Flexible Wiring of the SR host and the expansion module:



info@logicbus.com.mx

www.logicbus.com.mx

Alcalde # 1822 Col. Miraflores C.P. 44270 Guadalajara, Jal. Mexico
MX 01 (33) 3854-5975 y 3823-4349 USA 001 (619)- 884-94-93 (San Diego, CA. Office)