





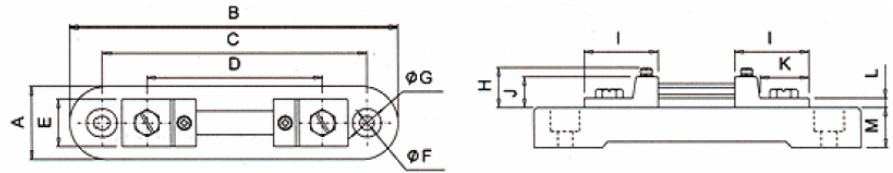
## ORDERING INFORMATION

LBUA-SHT14 - Type - Amp / Signal - Accuracy

CODE	TYPE	CODE	AMP	CODE	AMP	CODE	AMP	CODE	AMP	CODE	AMP	CODE	Signal	CODE	Accuracy
A		0010	10A(*A)	0060	60A(*A)	0250	250A(*B)	0800	800A(*C)	4000	4000A(*D)	050	50mV	100	1.0%
B		0020	20A(*A)	0080	80A(*A)	0300	300A(*B)	1000	1000A(*C)	5000	5000A(*D)	060	60mV	050	0.5%
C		0030	30A(*A)	0100	100A(*A)	0400	400A(*B)	1500	1500A(*C)	xxxx	Specify	075	75mV	025	0.25%
D		0040	40A(*A)	0150	150A(*A)	0500	500A(*B)	2000	2000A(*C)	*A: Type A; *B: Type B; *C: Type C; *D: Type D		100	100mV	1.0%: Standard; 0.5% & 0.25%: Option	
		0050	50A(*A)	0200	200A(*A)	0600	600A(*B)	3000	3000A(*D)			xxx	Specify mV		

### TYPE A 10A through 200A Standard Accuracy ±1.0%

#### DIMENSIONS

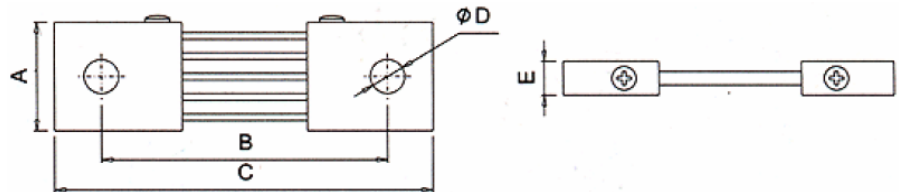
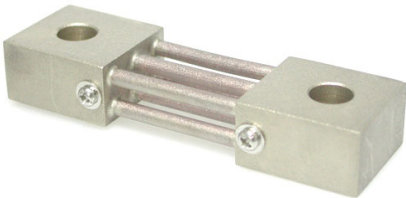


MODEL	A	B	C	D	E	F	G	H	I	J	K	L	M
LBUA-SHT14-A-10A~	31	136	110	73	20	6	12	17	32	13	21	5	17
~													
LBUA-SHT14-A-150A~													
LBUA-SHT14-A-200A~	31	136	110	67	20	6	12	17	29	15	--	--	17

\*Dimensions subject to change without notice. Please check with our sales dep. before placement drawing.

### TYPE B 200A through 600A Standard Accuracy ±1.0%

#### DIMENSIONS

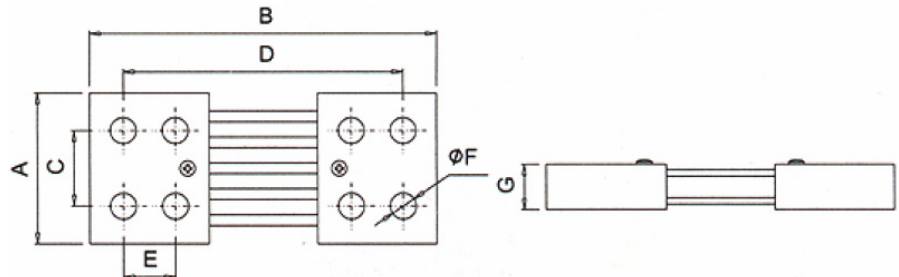
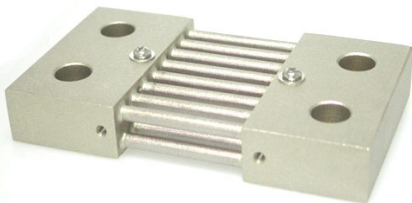


MODEL	A	B	C	D	E
LBUA-SHT14-B-200A~	32	89	116	9	10
LBUA-SHT14-B-250A~	41	86	116	10	12
LBUA-SHT14-B-300A~	34	86	118	12	20
LBUA-SHT14-B-400A~	45	86	119	12	20
LBUA-SHT14-B-500A~	55	86	116	12	20
LBUA-SHT14-B-600A~	55	90	122	12	21

\*Dimensions subject to change without notice. Please check with our sales dep. before placement drawing.

### TYPE C 800A through 2000A Standard Accuracy ±1.0%

#### DIMENSIONS



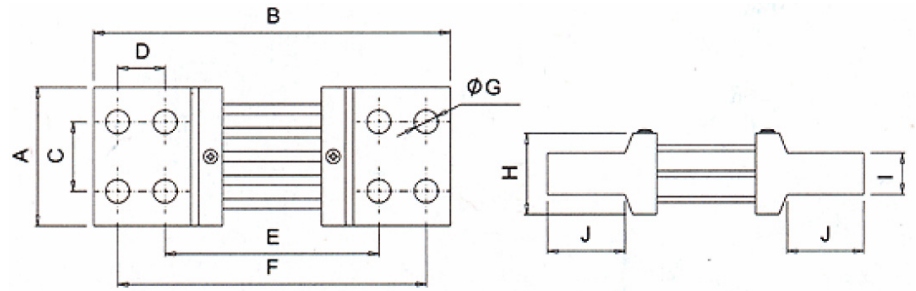
MODEL	A	B	C	D	E	F	G
LBUA-SHT14-C-800A~	70	122	35	90	--	12	21
LBUA-SHT14-C-1000A~	70	159	35	121	--	12	21
LBUA-SHT14-C-1500A~	100	159	49	119	--	12	21
LBUA-SHT14-C-2000A~	100	190	50	166	38	14	39

\*Dimensions subject to change without notice. Please check with our sales dep. before placement drawing.

# LBUA-SHT14 DC Current Shunt

TYPE D 3000A through 5000A Standard Accuracy  $\pm 1.0\%$ ;

## ■ DIMENSIONS



MODEL	A	B	C	D	E	F	G	H	I	J
LBUA-SHT14-D-3000A~	103	273	55	45	142	232	14	64	28	90
LBUA-SHT14-D-4000A~	110	292	50	50	153	253	17	82	34	97
LBUA-SHT14-D-5000A~	128	315	60	54	163	271	17	106	41	100

\*Dimensions subject to change without notice. Please check with our sales dep. before placement drawing.

Shunts

[info@logicbus.com.mx](mailto:info@logicbus.com.mx)

[www.logicbus.com.mx](http://www.logicbus.com.mx)

Alcalde #1822 Col. Miraflores C.P. 44270 Guadalajara, Jal. Mexico  
 MX 01 (33) 3854-5975 y 3823-4349 USA 001 (619)-884-94-93 (San Diego, CA. Office)