

## Chapter 19: Ethernet Communication and Security

The I-8437/8837, 7188EG & W-8037/8337/8737 controller support Modbus TCP/IP protocol in their ethernet port. For safety reason, user may add security in the Modbus TCP/IP protocol. When doing this, only PCs or devices with the permissive IP can connect in via Modbus TCP/IP.

The I-8437/8837 supports Modbus TCP/IP security since driver version of 3.01. While I-7188EG since version of 2.01. The Wincon-8037/8337/8737 since driver version of 3.12.

### Note:

The 7188EG/XG has embedded “license checking” since their driver version of 2.01. The 7188EG/XG delivered from after the date of Dec.01,2004 is burned with a legal license. That means they are already licensed.

If your 7188EG/XG is embedded with old version (driver version 1.xx) & wish to update it to version of 2.01 or later.

Please writedown the 8-bytes serial No. & product serial No of your I-7188EG/XG as below, for example.

8-byte Serial No :        **01 98 E1 A7 08 00 00 30**

Product serial No. :    **I7188EG003KA003** (listed on the shell of your 7188EG/XG)

You may short INIT to GND & then recycle the power of your 7188EG/XG, & then running 7188xw.exe on the PC & give below command to get license information. (If you are not familiar with the “7188xw.exe”, please refer to Appendix B of the “User’s Manual Of The ISaGRAF Embedded Controller” )

7188> **Isa7188e \*p=** (to get licensed or not for 7188EG)

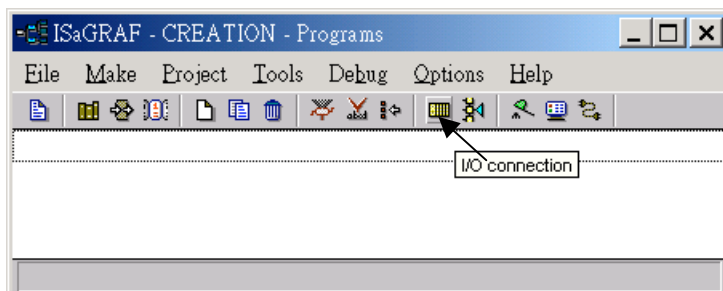
7188> **Isa7188 \*p=** (to get licensed or not for 7188XG)

7188> **ver** (to get 8-byte Serial No.)

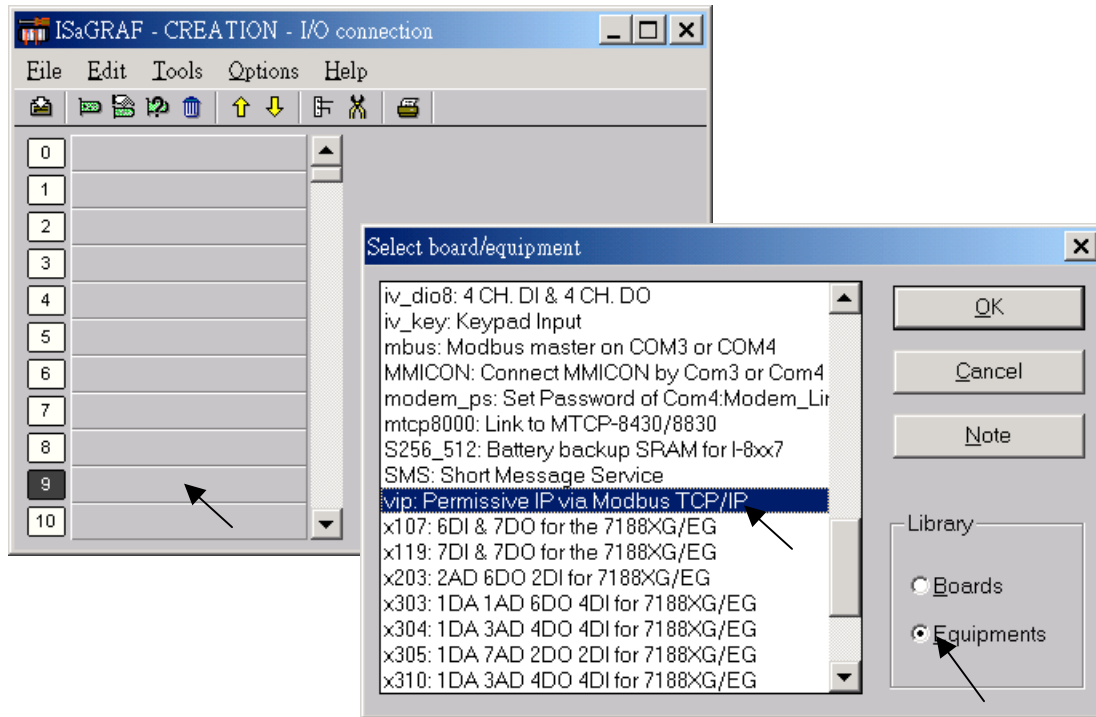
**Note: Only the legal I-7188EG/XG can get a legal license.**

To add Modbus TCP/IP security, please make sure the ISaGRAF I/O library “vip” is already in your ISaGRAF Workbench. You may check it as below.

First open the “I/O connection”



Then double click on slot No. higher than 8, check on “Equipments”, do you see “vip” ?



If “vip” is found, please connect it to your ISaGRAF program as below. Then re-compile your ISaGRAF program. And the security will work.

