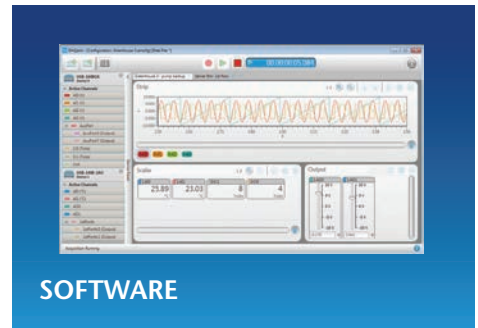
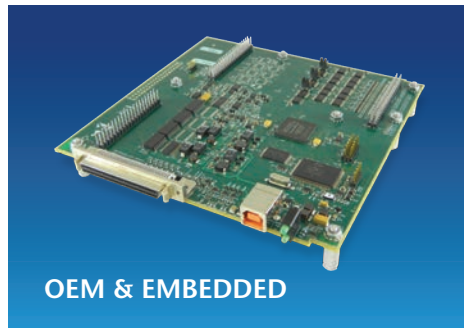
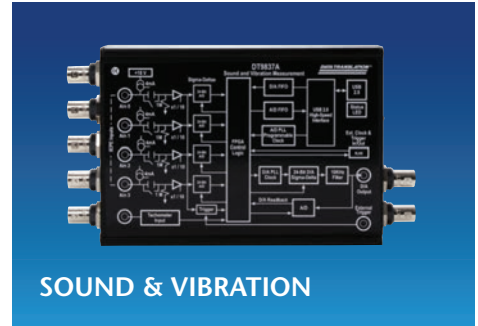
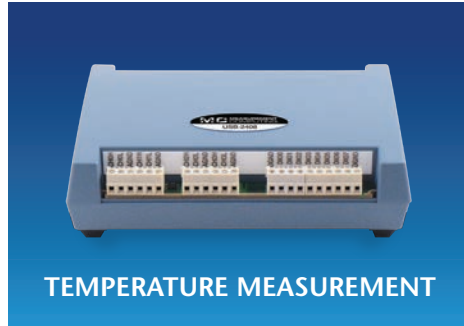


# DATA ACQUISITION CATALOG



## OUR PROMISE TO YOU



### FREE SUPPORT

Free technical support, for the life of your product, is available from qualified application engineers.



### 30-DAY MONEY-BACK GUARANTEE

If you aren't happy, simply return the product for a full refund (U.S. customers only).



### 1 YEAR WARRANTY

All products are backed with a one year warranty. Buy with confidence.



### QUALITY GUARANTEE

We're committed to designing and manufacturing DAQ products that exceed our customers' expectations.

## OUR PRODUCT LINES



High quality Data Acquisition, and Data Loggers that are easy-to-use, easy-to-integrate and easy-to-support.



Advanced DAQ devices specializing in dynamic signal analyzers and isolated data acquisition.

# Data Acquisition and Control

2

Measurement Computing provides data acquisition solutions for a wide range of applications and interfaces. MCC offers high-quality hardware, software, and drivers for a quick and customizable solution to your unique application.

## 16-BIT MULTIFUNCTION

### USB-230 Series



Analog Inputs	8 SE/4 DIFF
Resolution	16-bit
Sample Rate	Up to 100 kS/s
Simultaneous	—
Isolated	—
Analog Outputs	2
Digital I/O	8
Counters	1 x 32-bit



- Software support for Windows

## HIGH-PRECISION

### NEW USB-1808 Series



Analog Inputs	8 DIFF
Resolution	18-bit
Sample Rate	Up to 200 kS/s/Ch
Simultaneous	✓
Isolated	—
Analog Outputs	2
Digital I/O	4
Counters	2 x 32-bit†



- Software support for Windows
- † 2 quadrature encoder inputs

## ETHERNET MULTIFUNCTION

### E-1608



Analog Inputs	8 SE/4 DIFF
Resolution	16-bit
Sample Rate	250 kS/s
Simultaneous	—
Isolated	—
Analog Outputs	2
Digital I/O	8
Counters	1 x 32-bit



- Software support for Windows, Linux and Android

## HIGH-SPEED SIMULTANEOUS

### DT9832 Series



Analog Inputs	2 or 4 SE
Resolution	16-bit
Sample Rate	Up to 2 MS/s/Ch
Simultaneous	✓
Isolated	✓
Analog Outputs	Up to 2
Digital I/O	32
Counters	5 x 32-bit†



- Software support for Windows
- † 3 quadrature encoder inputs

## HIGH-SPEED MULTIFUNCTION

### USB-1608G Series



Analog Inputs	16 SE/8 DIFF
Resolution	16-bit
Sample Rate	Up to 500 kS/s
Simultaneous	—
Isolated	—
Analog Outputs	Up to 2
Digital I/O	8
Counters	2 x 32-bit



- Software support for Windows, Linux and Android

## ISOLATED SIMULTANEOUS

### DT8824/DT9824 (Ethernet, USB)



Analog Inputs	4 DIFF†
Resolution	24-bit
Sample Rate	4800 S/s/Ch
Simultaneous	✓
Isolated	✓
Analog Outputs	—
Digital I/O	Up to 16
Counters	—



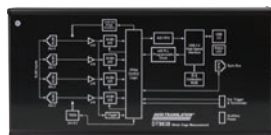
- Software support for Windows
- † ±500 V Isolated channel-to-channel

## BRIDGE-BASED SENSORS

### DT9838



Analog Inputs	4 DIFF
Bridge Inputs	✓
Programmable Excitation	✓
Voltage Inputs	±250 mV
Resolution	24-bit
Sample Rate	52.7 kS/s/Ch
Simultaneous	✓
Digital I/O	1 Tachometer



- Software support for Windows

## MULTI SENSOR

### DT9829-8



Analog Inputs	8 DIFF
Bridge Inputs	✓
Thermocouple, Resistance, Current	✓
Voltage Inputs	✓
Resolution	24-bit
Sample Rate	960 S/s
Simultaneous	—
Digital I/O	8



- Software support for Windows

# Data Acquisition and Control

Measurement Computing provides data acquisition solutions for a wide range of applications and interfaces. MCC offers high-quality hardware, software, and drivers for a quick and customizable solution to your unique application.

DEVICE	Bus Type	Analog Inputs	Sample Rate	Resolution	Digital I/O	Counters	Analog Outputs
<b>LOW COST</b>							
USB-200 Series	USB	8 SE	500 kS/s	12-bit	8	1	Up to 2
USB-230 Series	USB	8 SE/4 DIFF	100 kS/s	16-bit	8	1	2
BTH-1208LS	Bluetooth	8 SE/4 DIFF	1 kS/s	12-bit	8	1	2
USB-1208LS	USB	8 SE/4 DIFF	1.2 kS/s	12-bit	16	1	2
USB-1208FS-Plus	USB	8 SE/4 DIFF	50 kS/s	12-bit	16	1	2
E-1608	Ethernet	8 SE/4 DIFF	250 kS/s	16-bit	8	1	2
USB-1608G Series	USB	16 SE/8 DIFF	500 kS/s	16-bit	8	2	Up to 2
DT9812/13/14 Series	USB	Up to 24 SE	100 kS/s	12-bit	Up to 16	1	2
DT9800 Series	USB	16 SE/8 DIFF	100 kS/s	12 or 16-bit	16	2	Up to 2
<b>SIMULTANEOUS</b>							
USB-1808	USB	8 DIFF	50 kS/s/ch	18-bit	4	2*	2
USB-1808X	USB	8 DIFF	200 kS/s/ch	18-bit	4	2*	2
USB-1608FS-Plus	USB	8 SE	100 kS/s/ch	16-bit	8	1	—
DT9816 Series	USB	6 SE	750 kS/s/ch	16-bit	16	1	—
DT9832 BNC Series	USB	2 or 4 SE	2 MS/s/ch	16-bit	32	5*	Up to 2
DT9836 BNC Series	USB	6 or 12 SE	225 kS/s/ch	16-bit	32	5*	Up to 4
DT9826	USB	16 SE	41.6 kS/s/ch	24-bit	16	2	—
<b>HIGH SPEED</b>							
USB-1208HS	USB	8 SE/4 DIFF	1 MS/s	13-bit	16	2	—
USB-2600 Series	USB	16 or 64 SE	1 MS/s	16-bit	24	4	Up to 4
USB-1616HS Series	USB	16 SE/8 DIFF	1 MS/s	16-bit	24	4	Up to 4
DT9834-16-4-16-BNC	USB	16 SE/8 DIFF	500 kS/s	16-bit	32	5	4
DT9862 Series	USB	2 SE	10 MS/s/ch	16-bit	32	5*	Up to 2
USB-2020	USB	2 SE	20 MS/s/ch	12-bit	8	—	—
<b>HIGH PRECISION</b>							
USB-2404 Series	USB	4 DIFF	50 kS/s/ch	24-bit	—	—	—
DT8824	Ethernet	4 DIFF	4.8 kS/s/ch	24-bit	4	—	—
DT9824	USB	4 DIFF	4.8 kS/s/ch	24-bit	16	—	—
DT9844	USB	32 SE/16 DIFF	1 MS/s	20-bit	32	5	—
<b>DIGITAL I/O</b>							
USB-1024LS	USB	—	—	—	24	1	—
USB-DIO32HS	USB	—	—	—	32**	—	—
USB-DIO96H Series	USB	—	—	—	96	1	—
E-DIO24	Ethernet	—	—	—	24	1	—
DT9810	USB	8 SE	25 kS/s	10-bit	20	1	—
<b>COUNTER/TIMER</b>							
USB-CTR04	USB	—	—	—	8**	4**	—
USB-CTR08	USB	—	—	—	8**	8**	—
<b>ANALOG OUTPUT</b>							
USB-3100 Series	USB	—	—	—	8	1	Up to 16
USB-3101FS	USB	—	—	—	—	—	4
<b>MIXED/UNIVERSAL INPUT***</b>							
USB-2404-UI	USB	4 DIFF	100 S/s/ch	24-bit	—	—	—
SC-1608-USB	USB	10 DIFF	250 kS/s	16-bit	8	2	—
SC-1608X-2AO-USB	USB	8 DIFF	500 kS/s	16-bit	8	2	2
SC-1608-2AO-ENET	Ethernet	8 DIFF	250 kS/s	16-bit	8	1	2
DT9829-8	USB	8 DIFF	960 S/s	24-bit	8	—	—
DT9838	USB	4 DIFF	52.7 kS/s/ch	24-bit	—	—	—

\* Capable of measuring quadrature encoders

\*\* High-speed scanning up to 8 MS/s

\*\*\* Most devices capable of measuring strain, pressure, temperature, current, resistance, and voltage.

# Sound and Vibration

4

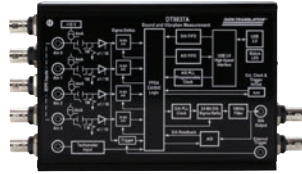
Directly measure IEPE-type accelerometers or voltage inputs with no added signal conditioning using USB and Ethernet data acquisition (DAQ) devices.

## PORTABLE USB

### DT9837 Series



Analog Inputs	4 SE†
Resolution	24-bit
Sample Rate	Up to 105.4 kS/s/Ch
Simultaneous	✓
Isolated	—
Analog Outputs	Up to 1
Digital I/O	—
Tachometer	Up to 1



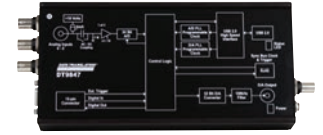
† Direct IEPE inputs, sync port for channel expansion

## WIDE BANDWIDTH USB

### DT9847 Series



Analog Inputs	Up to 3 SE†
Resolution	24-bit
Sample Rate	216 kS/s/Ch
Simultaneous	✓
Isolated	—
Analog Outputs	Up to 2
Digital I/O	8
Tachometer	—



† Direct IEPE inputs, sync port for channel expansion

## MEDIUM-CHANNEL COUNT USB

### DT9857E Series



Analog Inputs	8 or 16 SE†
Resolution	24-bit
Sample Rate	105.4 kS/s/Ch
Simultaneous	✓
Isolated	—
Analog Outputs	2
Digital I/O	16
Tachometer	1



† Direct IEPE inputs, sync port for channel expansion

## HIGH-CHANNEL COUNT USB

### VIBbox



Analog Inputs	Up to 64†
Resolution	24-bit
Sample Rate	105.4 kS/s/Ch
Simultaneous	✓
Isolated	—
Analog Outputs	Up to 8
Digital I/O	Up to 64
Tachometer	Up to 4



† Direct IEPE inputs, sync port for channel expansion

## SIGNAL ANALYZER ARM

### DT7837



Analog Inputs	4 IEPE
Resolution	24-bit
Sample Rate	105.4 kS/s/Ch
Simultaneous	✓
Analog Outputs	1
Digital I/O	16
Interface	Ethernet, USB, microSD



• Embedded ARM processor and Linux on-board

## DYNAMIC SIGNAL ANALYZER

### DT8837

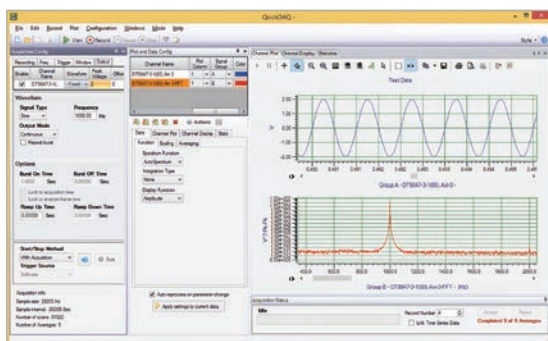


Analog Inputs	4 IEPE
Resolution	24-bit
Sample Rate	52.7 kS/s/Ch
Simultaneous	✓
Isolated	✓
Analog Outputs	1
Digital I/O	4
Tachometer	1



• Integrated web server

## QUICKDAQ VIBRATION SOFTWARE



- Two extensions add FFT analysis capabilities to the free base package
- QuickDAQ FFT Analysis Options allow serious sound & vibration analysis supporting modal analysis and ODS analysis methods
- Single-Channel and Dual-Channel (frequency response) FFT operations
- Switch between the Data Logger time-based interface and the FFT Analyzer block/average-based interface

# Temperature Measurement

Measurement Computing offers a wide selection of temperature measurement DAQ products. Low-cost solutions such as the USB-TEMP offer thermocouple, RTD and thermistor inputs in one module.

## LOW-COST USB

### USB-TEMP and TC Series



Channels	8
Thermocouples	✓
RTD	✓
Voltage Inputs	—
Sample Rate	2 S/s/Ch
Isolated	—
Analog Outputs	—
Digital I/O	8



- Software support for Windows, Linux and Android

## LOW-COST ETHERNET

### E-TC



Channels	8
Thermocouples	✓
RTD	—
Voltage Inputs	—
Sample Rate	4 S/s/Ch
Isolated	✓
Analog Outputs	—
Digital I/O	8



- Software support for Windows, Linux and Android

## HIGH-CHANNEL COUNT

### TC-32 (Ethernet, USB)



Channels	Up to 64
Thermocouples	✓
RTD	—
Voltage Inputs	—
Sample Rate	3 S/s/Ch
Isolated	✓
Analog Outputs	—
Digital I/O	Up to 80



- Software support for Windows, Linux and Android

## HIGH-ACCURACY

### MEASURpoint (Ethernet, USB)



Channels	Up to 48†
Thermocouples	✓
RTD	✓
Voltage Inputs	Up to ±400 V
Sample Rate	10 S/s/Ch
Isolated	✓
Analog Outputs	—
Digital I/O	16



- † 500 V isolated channel-to-channel

DEVICE	Channels	Thermocouple Inputs	RTD, Thermistor, Semiconductor, Temperature Inputs	Voltage Inputs	Sample Rate
<b>USB</b>					
USB-TC	8	✓	—	—	2 S/s/ch
USB-TEMP	8	✓	✓	—	2 S/s/ch
USB-2408	8*	✓	—	✓	1 kS/s
USB-2416	16**	✓	—	✓	1 kS/s
USB-2001-TC	1	✓	—	—	4 S/s
USB-2404-UI	4	✓	✓	✓	100 S/s/ch
DT9874 MEASURpoint	8 to 48	✓	RTD	✓	10 S/s/ch
DT9828	8	✓	—	—	600 S/s
DT9829-8	8	✓	✓	✓	960 S/s
<b>WIRELESS</b>					
WiFi-501	1††	—	—	—	10 sec to 12 hrs
WiFi-501-TP	1	—	Thermistor	—	10 sec to 12 hrs
WiFi-502	2†	—	—	—	10 sec to 12 hrs
<b>ETHERNET</b>					
E-TC	8	✓	—	—	4 S/s/ch
TC-32	32***	✓	—	—	3 S/s/ch
DT8874 MEASURpoint	8 to 48	✓	RTD	✓	10 S/s/ch
<b>LOGGERS</b>					
USB-501	1††	—	—	—	10 sec to 12 hrs
USB-501-TC	1	✓	—	—	1 sec to 12 hrs
USB-502	2†	—	—	—	10 sec to 12 hrs
USB-601	1††	—	—	—	10 sec to 2 hrs
USB-602	2†	—	—	—	10 sec to 2 hrs
USB-603	2	✓	—	—	2 sec to 2 hrs
USB-5104	4	✓	—	—	1 sec to 18 hrs
USB-5106	4	—	Temperature, Current, Voltage	✓	1 sec to 18 hrs

\* Expandable to 16 SE/8 DIFF

\*\*\* Expandable to 64

†† Measure temperature directly

\*\* Expandable to 32 SE/16 DIFF

† Measures temperature and humidity

# Data Loggers

6

Record and monitor temperature, voltage, current, humidity and more using portable, stand-alone data loggers.

## LOW-COST

### USB-500 Series



Channels	1 or 2
Measurement	Temperature, Humidity, Voltage, Current
Sample Rate	1 sec to 12 hrs
Digital I/O	—
Memory	Up to 32 K Readings
Features	LCD Display



- Included software for USB-500/600 Series

## MULTI-CHANNEL

### USB-5100 Series



Channels	4
Measurement	Thermocouple, Current, Voltage
Sample Rate	1 sec to 18 hrs
Digital I/O	—
Memory	Up to 1.9 Million Readings
Features	LCD Display



- Includes easy-to-use software

## TEMPERATURE & HUMIDITY

### WiFi-500 Series



Channels	1 or 2
Measurement	Temperature, Humidity
Sample Rate	10 sec to 12 hrs
Digital I/O	—
Memory	Up to 250 K Readings
Features	LCD Display



- WiFi Sensor Software available as a free download

## HIGH-SPEED INDUSTRIAL

### LGR-5320 Series



Channels	16 SE/8 DIFF
Measurement	Up to $\pm 30$ V
Sample Rate	Up to 200 kS/s <sup>†</sup>
Digital I/O	16
Memory	Up to 32 GB
Features	Quadrature Encoder



- Included DAQLog software to get you up and running
- † Correlated analog and digital signals

DEVICE	Channels	Measurement Type	Sample Rate	Memory	Features
--------	----------	------------------	-------------	--------	----------

#### LOW SPEED

USB-501	1	Temperature	10 sec to 12 hrs	16 K Readings	Status LEDs
USB-501-LCD	1	Temperature	1 sec to 12 hrs	16 K Readings	LCD Display
USB-501-LT	1	Temperature	15 min up to 2 hrs	4 K Readings	Ultra Compact
USB-501-PRO	1	Temperature	1 sec to 12 hrs	32 K Readings	Extended Temperature Range
USB-501-RCG	1	Temperature	1 sec to 12 hrs	32 K Readings	Rechargeable Battery
USB-501-TC	1	Thermocouple	1 sec to 12 hrs	32 K Readings	—
USB-501-TC-LCD	1	Thermocouple	1 sec to 12 hrs	32 K Readings	LCD Display
USB-502	2	Temperature, Humidity	10 sec to 12 hrs	16 K Readings	Status LEDs
USB-502-LCD	2	Temperature, Humidity	10 sec to 12 hrs	16 K Readings	LCD Display
USB-502-PLUS	2	Temperature, Humidity	10 sec to 12 hrs	16 K Readings	Increased Accuracy
USB-503	1	0 up to 30 VDC	1 sec to 12 hrs	32 K Readings	—
USB-504	1	4 up to 20 mA	1 sec to 12 hrs	32 K Readings	—
USB-601	1	Temperature	10 sec to 2 hrs	250 K Readings	LCD Display
USB-602	2	Temperature, Humidity	10 sec to 2 hrs	250 K Readings	LCD Display
USB-603	2	Thermocouple	2 sec to 2 hrs	250 K Readings	LCD Display
USB-5104	4	Thermocouple	1 sec to 18 hrs	1.6 Million Readings	LCD Display
USB-5106	4	Temperature, Current, Voltage	1 sec to 18 hrs	1.9 Million Readings	LCD Display

#### HIGH SPEED

LGR-5325	16	$\pm 10$ V	Up to 100 kS/s	4 GB (Up to 32 GB)	4 Counters
LGR-5329	16	$\pm 30$ V	Up to 200 kS/s	4 GB (Up to 32 GB)	4 Quadrature Inputs, Isolated Digital Inputs

#### WIRELESS

WiFi-501	1	Temperature	10 sec to 12 hrs	> 250 K Readings	LCD Display
WiFi-501-TP	1	Temperature	10 sec to 12 hrs	> 250 K Readings	LCD Display/Probe
WiFi-502	2	Temperature, Humidity	10 sec to 12 hrs	> 250 K Readings	LCD Display

# OEM and Embedded Solutions

Board-only solutions with easy to integrate connectors. As a leading supplier of OEM DAQ solutions, MCC provides volume pricing and free technical support.

## MULTIFUNCTION USB

### USB-201-OEM



Analog Inputs	8 SE
Resolution	12-bit
Sample Rate	100 kS/s
Simultaneous	—
Analog Outputs	—
Digital I/O	8
Interface	USB



- Software support for Windows, Linux and Android

## MULTIFUNCTION ETHERNET

### E-1608-OEM



Analog Inputs	8 SE/4 DIFF
Resolution	16-bit
Sample Rate	250 kS/s
Simultaneous	—
Analog Outputs	2
Digital I/O	8
Interface	Ethernet



- Software support for Windows, Linux and Android

## HIGH SPEED

### USB-2637



Analog Inputs	64 SE
Resolution	16-bit
Sample Rate	1 MS/s
Simultaneous	—
Analog Outputs	4
Digital I/O	24
Interface	USB



- Software support for Windows, Linux and Android

## HIGH-PERFORMANCE ARM

### DT7816



Analog Inputs	8 SE
Resolution	16-bit
Sample Rate	400 kS/s/Ch
Simultaneous	✓
Analog Outputs	2
Digital I/O	16
Interface	Ethernet, USB, microSD



- Embedded ARM processor and Linux on-board

DEVICE	Bus Type	Analog Inputs	Sample Rate	Resolution	Digital I/O	Counters	Analog Outputs
--------	----------	---------------	-------------	------------	-------------	----------	----------------

#### LOW COST

USB-200-OEM Series	USB	8 SE	Up to 500 kS/s	12-bit	8	1	Up to 2
USB-230-OEM Series	USB	8 SE/4 DIFF	Up to 100 kS/s	16-bit	8	1	2
BTH-1208LS-OEM	Bluetooth	8 SE/4 DIFF	1 kS/s	12-bit	8	1	2
USB-1208FS-Plus-OEM	USB	8 SE/4 DIFF	50 kS/s	12-bit	16	1	2
E-1608-OEM	Ethernet	8 SE/4 DIFF	250 kS/s	16-bit	8	1	2
USB-1608G-OEM Series	USB	16 SE/8 DIFF	Up to 500 kS/s	16-bit	8	2	Up to 2
DT9812-10V-OEM	USB	8 SE	50 kS/s	12-bit	16	1	2

#### SIMULTANEOUS

USB-1808 Series	USB	8 DIFF	Up to 200 kS/s/ch	18-bit	4	2*	2
USB-1608FS-Plus-OEM	USB	8 SE	100 kS/s/ch	16-bit	8	1	—
DT9832/36-OEM Series	USB	2, 4, 6 or 12 SE	Up to 2 MS/s/ch	16-bit	32	5*	Up to 2
DT9837-OEM Series	USB	4 SE with IEPE	Up to 105.4 kS/s/ch	24-bit	—	1	Up to 1
DT9857E-OEM Series	USB	Up to 16 SE with IEPE	105.4 kS/s/ch	24-bit	16	Tacho +3	2

#### HIGH SPEED

USB-2600 Series	USB	16 or 64 SE	1 MS/s	16-bit	24	4	Up to 4
DT9834-OEM Series	USB	16 SE/8 DIFF	500 kS/s	16-bit	32	5	Up to 4
DT9844-32-OEM	USB	32 SE/16 DIFF	1 MS/s	20-bit	32	5	—
USB-2020	USB	2 SE	20 MS/s/ch	12-bit	8	—	—

#### DIGITAL I/O

USB-DIO24 Series	USB	—	—	—	24	1	—
USB-DIO32HS-OEM	USB	—	—	—	32**	—	—
USB-DIO96H/50	USB	—	—	—	96	1	—
E-DIO24-OEM	Ethernet	—	—	—	24	1	—

#### COUNTER/TIMER

USB-CTR-OEM Series	USB	—	—	—	8**	4 or 8**	—
--------------------	-----	---	---	---	-----	----------	---

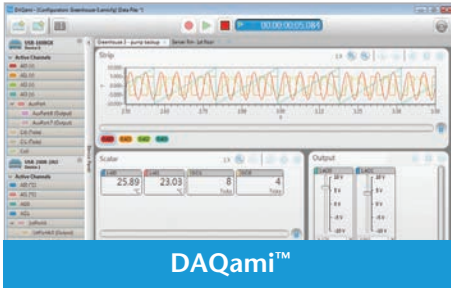
\* Capable of measuring quadrature encoders

\*\* High-speed scanning up to 8 MS/s

# Data Acquisition Software

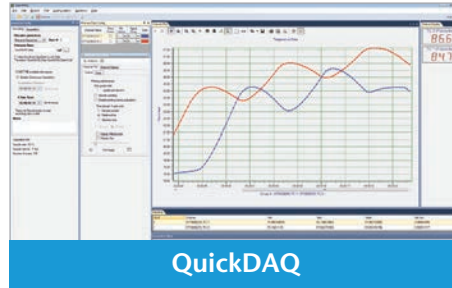
Software support includes easy-to-use data viewing and logging software, drivers for the most popular applications and languages, and support for various operating systems including Windows®, Linux®, and Android™.

## QUICK AND EASY



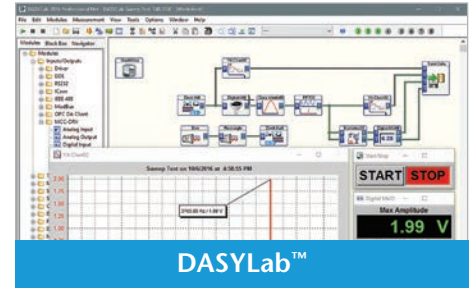
DAQami™

Companion software provides a drag-and-drop interface that makes acquiring data and generating signals a quick and simple task.



QuickDAQ

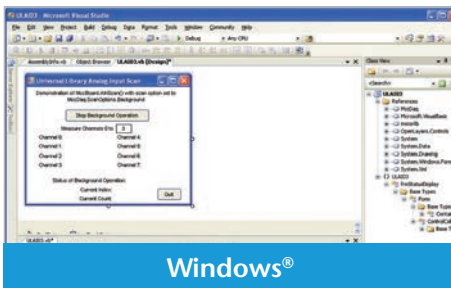
Acquire and display from all Data Translation USB and Ethernet DAQ devices that support analog input streaming.



DASyLab™

Offers real-time analysis, control, and the ability to create custom graphical user interfaces without programming.

## PROGRAMMING SUPPORT



Windows®

Programming API for C®, C++®, C#®, Visual Basic®, and Visual Basic® .NET™ using Visual Studio® and other IDEs.



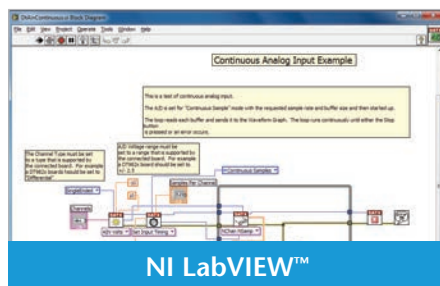
Linux®

Professional, open-source Linux drivers are available for many devices.



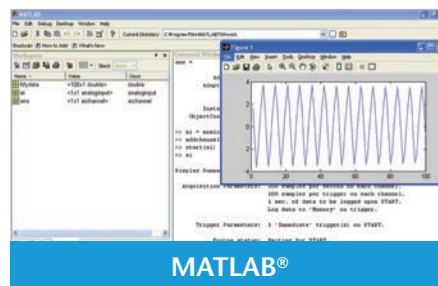
Android™

Software API communicates with supported DAQ devices over the Android 3.1 platform and later.



NI LabVIEW™

Comprehensive library of VIs and example programs to speed your NI LabVIEW development



MATLAB®

Access the powerful visualization and analysis capabilities of MATLAB with most USB and PCI devices



The mission of Measurement Computing Corporation is to provide our customers with PC-based data acquisition hardware and software that will save you time and save you money. We are committed to developing the DAQ products you want, in the form and with interfaces you need. We are always working on new and better products, and welcome your feedback and requests for custom solutions. Our goal is complete customer satisfaction.

Measurement Computing Corporation

10 Commerce Way  
Norton, MA 02766

Phone: (508) 946-5100

Fax: (508) 946-9500

E-Mail: [info@mccdaq.com](mailto:info@mccdaq.com)

[www.mccdaq.com](http://www.mccdaq.com)