

WoMaster

Company Profile



📞 **MX:**+52 (33)-3854-5975
USA:+1 (619) 616-7350

📍 **MX:** Av. Miguel Hidalgo y Costilla
1443 Piso 6
Col. Americana (Torre Iclar)
C.P. 44160, Guadalajara Jal. México

USA: 863 Bowsprit Road, Chula
Vista, CA 91914

🌐 **www.logicbus.com**
www.logicbus.com.mx

ABOUT US

WoMaster has over 20 years of experience in the Industrial IoT (IIoT) field and is a leading global provider of industrial communication and IIoT solutions. The company is a joint venture formed by renowned international industrial groups, including IEI x QNAP Group (industrial computing and AIoT solutions), Sweden HMS Industrial Networks (a listed industrial automation group known for AnyBus technology), and HolyStone Group (specializing in industrial electronic components and touch ICs). Together, they are committed to delivering professional and innovative IIoT solutions and services.

VISION



Based on the core belief that true success stems from long-term trust, WoMaster is dedicated to designing and manufacturing high-quality industrial products for critical applications such as railway, power and utilities, intelligent transportation, and smart city surveillance. From high-speed 5G and Wi-Fi 6 communication devices to long-range LoRa, LoRaWAN, and NB-IoT platforms, WoMaster creates value through rugged industrial-grade design, public and private cloud platforms, advanced cybersecurity protection, and customer-oriented solutions tailored for demanding environments.



GLOBAL



WoM Asia (Headquarter in Taiwan)

Responsible for core hardware/software R&D, technical support, business development, brand marketing, and manufacturing procurement.



WoM China (Jiangsu Yancheng)

Responsible for IoT integrated solution hardware/software development, sales and marketing, product testing, technical support, as well as backend production verification and logistics.



WoM Europe (Barcelona Spain)

Responsible for business development, brand promotion, technical services, and logistics center in the European region.



WoM LATAM (Panama)

Responsible for business development, brand promotion, and technical services in the Latin American region.

Factory Taiwan



Factory Jiangsu



COMMITMENT TO QUALITY

Design Quality Assurance (DQA)

WoMaster emphasizes Design Quality Assurance (DQA) throughout the entire product lifecycle. From concept to development, products are designed by an experienced R&D team and tested in in-house labs to meet standards like FCC, CE, UL, and IEC.

Dedicated EMC, shock/vibration, and environmental simulation labs ensure compliance with industry-specific certifications such as EN50155, IEC61850, and NEMA TS2. These rigorous tests guarantee safety, stability, and long-term reliability in critical applications like railways, heavy industry, and traffic control.

Manufacturing Quality Assurance (MQA)

WoMaster's Manufacturing Quality Assurance (MQA) is implemented in accordance with ISO 9001 certification standards. All products are manufactured in anti-static environments using high-standard production and testing equipment. The production process includes strict In-Process Quality Control (IPQC) and Final Quality Control (FQC), with every unit undergoing a 4-hour burn-in test at 60°C before packaging.

In addition, WoMaster conducts regular staff training, process inspections, and continuous manufacturing process optimization to ensure that all quality standards are rigorously upheld. The Quality Control team also provides immediate feedback to the R&D department to enhance product performance and system compatibility.

Environmental Friendly Production

Giving credits to WoMergy which has become our creative energy, we are also committed to environmental protection. All of WoMaster's products are compliant with European Union's WEEE, REACH and RoHS directives. By not using restricted hazardous materials, we benefit to the Earth well-being not only during manufacturing and exploitation, but also on the stage of recycling.



PRODUCT OVERVIEW

Private Cloud Platform

ThingsMaster OTA

Network Management System

NetMaster



Industrial 5G/4G LTE Router

4G LTE Router + WLAN AP

WR315GR WR312/322GR WR312/322A-M12

Outdoor 4G Routers

WR210A

PoE 4G WLAN Routers

WR319/329P WR222/224

WiFi AP

Outdoor WiFi 6 AP

WAS12G-AX-IP67 WAC855G WAC835G

5G Cellular+ WiFi 6 AP

WAS12G-AX-5GM2-D

Explosion Proof AP

WAC4131EX

All-in-One Smart City Box

SCB1200

5GHz PoE 2.4GHz

SCB111-485

Modbus NB-IoT M-Bus LTE-1 adms

Industrial Ethernet

Managed 10G PoE Switches

10G

IRS628XG /IRP628XG

10G PoE++

IDP616XG IDP205G DS108H DS408H

Railway M12 PoE

MP614/MS614 MP610/MS610

PoE+

EN50155 EN45545

LoRa LoRaWAN Gateway

LoRaWAN Gateway LoRaWAN LoRa

LoRaWAN Node LoRa Controller

LR144 LM100 / LC144

Serial Device Server

MQTT

NPS5110 NPS5130A NPS5431S PS6151 NPS6131A

Modbus Windows 11

IoT Sensors

Weather Station Wind Noise Rain Solar Flood Gas Sensors Water Sensors Soil Sensors

Streetlight Controller Parking Sensor Waste Bin Sensor Manhole Sensor

NB-IoT LoRaWAN

MARKETS

WOMASTER SOLUTIONS FOR CRITICAL INDUSTRIAL APPLICATIONS



Railway & Metro

- Compliant with EN50155 and EN50121 standards, resistant to shock, temperature variation, and EMI
- M12 Ethernet switches, PoE routers, and wireless APs used for train communication, monitoring, and PIS
- References: Irish Rail, Taipei Metro, Chengdu Tianfu International Airport metro system



Power Utility & Renewable Energy

- Industrial LTE/5G routers and serial servers for smart substations, wind, and solar farms
- Support for IEC 61850, IEEE 1613, and other power communication standards
- Applications: wind farm monitoring, substation communication, smart meter gateways



ITS & Traffic Monitoring

- Core infrastructure with Layer 3 switches, wireless APs, and 5G routers
- Used in traffic signal control, video surveillance, V2X, and tolling systems (ETC)
- References: smart buses in multiple European cities, LTE signal controllers



Smart City & Public Safety

- LoRaWAN and NB-IoT technologies for smart lighting, utility metering, and air quality monitoring
- Industrial routers and cybersecurity platforms for public safety networks (e.g., 5G police bands in Europe)
- Solutions include: environmental sensors, streetlight gateways, emergency communication systems



SUCCESS STORIES



- European and South America Electricity Company
- Real time power monitor via serial, Ethernet, LTE
- Compatible with current monitor equipment and protocol

Power Distribution



- -40~75 °C wide temperature
- Enhanced Cybersecurity
- Dual SIM and LTE to WAN Redundancy
- High Compatibility over 2G/3G/4G

WR312G-LTE Serial over LTE Router



- Middle East Oil Gas Company
- Long Distance Communication to multiple Oil Wells
- Wide Operation Temperature

Oil Well Data Logger



- Private LoRa Network Distance >3 KM
- Multiple Analog Interfaces Management
- Modbus Protocol and Utility
- -40~75 °C wide temperature

LM100/LC144 LoRa Gateway Node



- National Water and Electricity Company
- Single and Multiple meter NBloT Gateway
- Wide Support for Cellular Networks
- Central Management over OTA

Smart Meter Gateway



- DLMS, COSEM, MBUS, Modbus Meters
- NBloT, Cat M1, Cat 1, Cat 4 LTE Cellular
- MQTT CoAP Cloud Protocols
- ThingsMaster OTA to manage devices over the air

SCB270 Multiple Meter Gateway



- Taiwan National Wastewater Plant
- Wide Wireless Coverage in Underground Level
- Wide Temperature and High Humidity

Wastewater Tunnel Network



- MESH Group up to 8 MESH AP to save wiring cost
- Easy Installation and Auto Configuration
- Wide Temperature -40~70 °C under 95% Humidity

WA512G Industrial MESH AP

SUCCESS STORIES

 <ul style="list-style-type: none"> • China International Airport • Baggage Transport, Passenger Information, Video Surveillance, Runway Surveillance System <p>International Airport Management</p>	 <ul style="list-style-type: none"> • Layer 2 ERPS Redundancy • Layer 3 Routing Redundancy • Enhanced Cybersecurity • High Power PoE Surveillance <p>RS628, RP428 Rackmount L3 L2 PoE Switch</p>
 <ul style="list-style-type: none"> • European Railway Company • Railway Certificated M12 Switches • Layer 3 Management • High Reliability <p>Railway Communication</p>	 <ul style="list-style-type: none"> • EN50155 Railway Certificate • EN45545 Fire Resistance Certificate • Layer 3 Management • Enhanced Cybersecurity <p>MP614 M12 Layer 3 Managed PoE Switch</p>
 <ul style="list-style-type: none"> • European BUS Company • PoE Surveillance • Layer 2 Management • Industrial Design <p>BUS Surveillance</p>	 <ul style="list-style-type: none"> • EN50121-4 wayside certificate • Enhanced Cybersecurity • 24V DC Power Booster to PoE • Wide Temperature -40~70 °C <p>DP412-LV Managed PoE 24V Boost Switch</p>
 <ul style="list-style-type: none"> • European BUS Company • PoE Surveillance • WiFi Service for Passengers <p>Smart BUS WiFi System</p>	 <ul style="list-style-type: none"> • GPS Tracking • Enhanced Cybersecurity • Passenger WiFi Service • 24V DC Power Booster to PoE <p>WR329P LTE PoE 24V Router</p>

SUCCESS STORIES

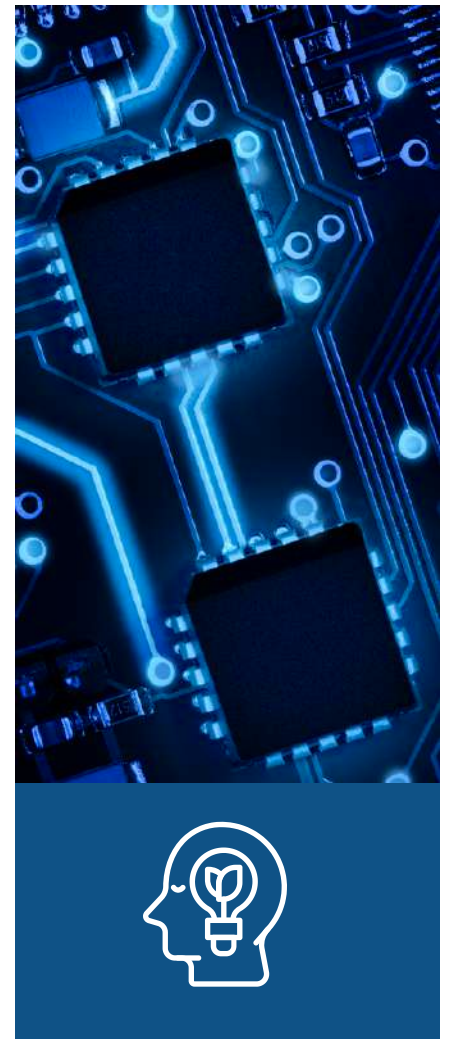
 <ul style="list-style-type: none"> • City Government • NBloT Controller over Street Light • Cybersecurity <p>Smart Street Light</p>	 <ul style="list-style-type: none"> • NBloT Light Controller • Cybersecurity • OTA Device Management • Compact Size <p>NBloT Light Controller</p>
 <ul style="list-style-type: none"> • European Shopping Mall • Real-Time Monitoring of Air Quality and Environment • VPN Network for multiple sites <p>Environment Monitoring</p>	 <ul style="list-style-type: none"> • Multiple VPN channels • Enhanced Cybersecurity • LTE over WAN Redundancy • ThingsMaster OTA management <p>WR222 LTE Gateway + ES105 Sensors</p>
 <ul style="list-style-type: none"> • Taiwan Starbucks Chain Stores • WAN + LTE Redundant Network • Cybersecurity • OTA Management <p>Chain Store Management</p>	 <ul style="list-style-type: none"> • Enhanced Cybersecurity • LTE over WAN Redundancy • ThingsMaster OTA for Configuration and Firmware Upgrade <p>WR224 LTE + WLAN Gateway</p>
 <ul style="list-style-type: none"> • International Cloud Platform • Temperature and Door Sensor • NBloT Gateway and GPS Tracker • Battery and Power Saving Mode <p>Refrigerator Management</p>	 <ul style="list-style-type: none"> • MQTT Protocol and OTA Device Management • Temperature and Door Sensor • NBloT Gateway and GPS tracker • Battery Power <p>NBloT Refrigerator Controller</p>

CORE COMPETENCE

WoMaster boasts a strong R&D team and in-house technological capabilities, committed to developing industrial communication and IoT products that meet international standards, are application-driven, and highly reliable. Our R&D excellence is reflected in the following areas:

- **Cross-Technology Integration:** Seamlessly combines industrial networking, wireless communication (5G/LTE/Wi-Fi 6), LoRaWAN, edge computing, and cloud platforms to deliver complete IIoT solutions.
- **Experienced Engineering Team:** Core team members come from industrial computing, automation, and networking backgrounds, with extensive system design and field deployment experience.
- **Proprietary Patented Technologies:** Holder of multiple design patents, including dual-SIM fast switching, dual power redundancy, and RF ESD protection, enhancing product stability and security.
- **Certified Vertical Application Design:** Products are designed and tested to comply with industry-specific standards such as EN50155 (railway), IEC61850 (energy), eMark and NEMA TS2 (transportation).
- **Comprehensive In-House Labs:** Equipped with EMC, shock/vibration, and environmental simulation labs to ensure product durability in extreme environments.
- **Agile Customization Capability:** Offers flexible design services including hardware interface adjustments, software feature tuning, protocol conversion, and integration—enabling faster project deployment.

At the core of WoMaster's R&D is not only innovation, but also a strong focus on reliability, safety, and real-world applicability, delivering long-term value through intelligent industrial networking solutions.



JOIN US TO SUCCESS

