

Conoce nuestros AMRs & COBOTS

CONTACTO:

Correo: ventas@logicbus.com

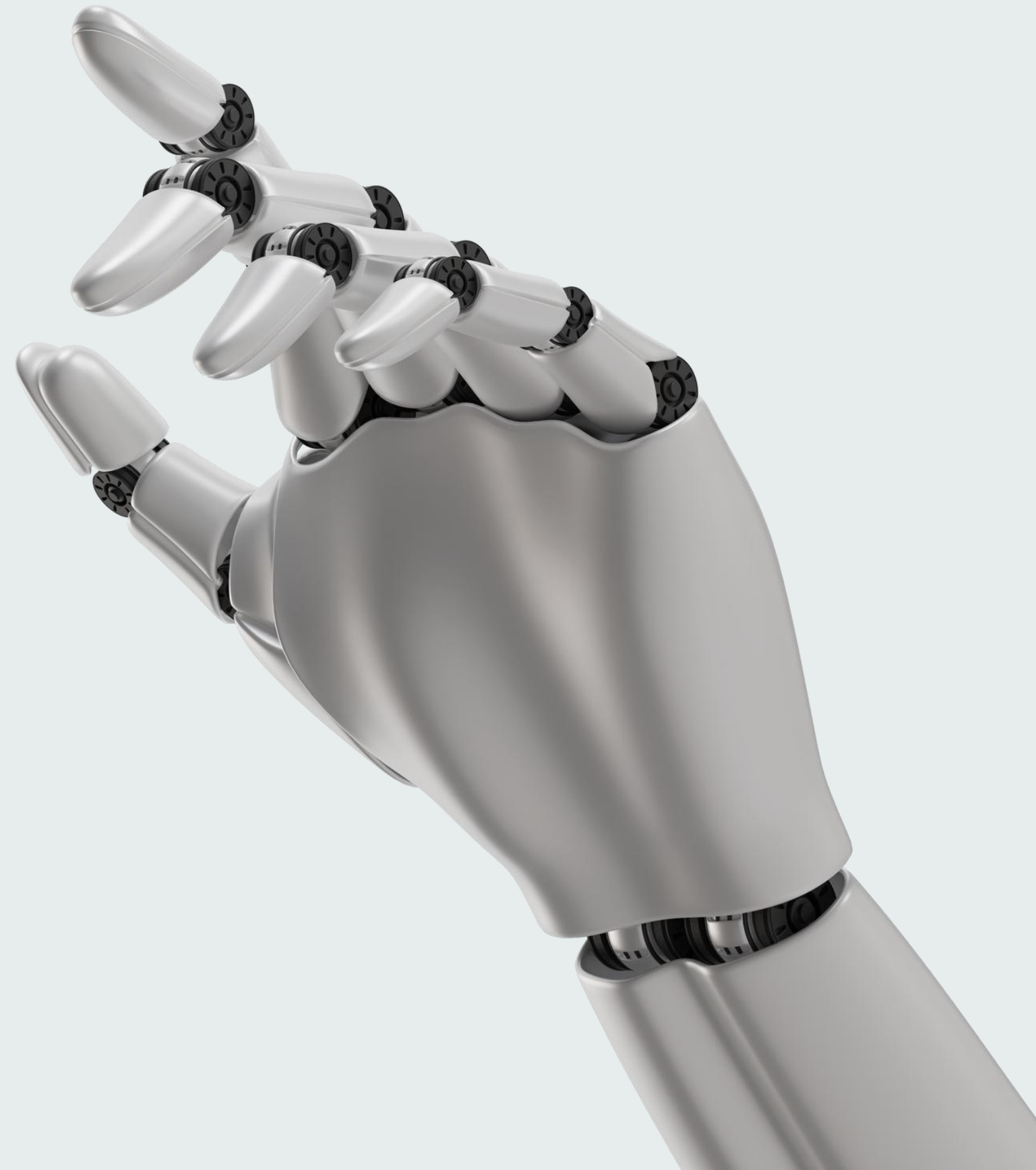
Teléfono: (+52) 33-38-54-59-75

WhatsApp: (+52) 33-38-54-59-75



Lista de Marcas

- | | |
|----|-------------|
| 01 | QUASI |
| 02 | KEMARO |
| 03 | LG ROBOTICS |
| 04 | YOUIBOT |
| 05 | MULTIWAY |
| 06 | FORWARD X |
| 07 | SIASUN |
| 08 | BROOKS |



QUASI ROBOTICS

Quasi Robotics specializes in the development of autonomous mobile robots (AMR) that optimize workflows across various industries. Their advanced technology, powered by artificial intelligence (Q.AI), enables robots to learn and make real-time decisions.

Commitment: Quasi Robotics aims to transform industrial automation by providing safe and efficient solutions that easily integrate with existing systems.



Model C2



Features

Max. Payload: 75 kg (25 kg per shelf)

Max. Speed: 8 Km/h

Navigation: Two-wheel drive, differential

Positioning Mode: Single LiDAR system and stereo vision camera

Communication: WI-FI and bluetooth 5.3

Battery endurance: 12 to 16 hours

Sensors (optional): Pressure, Humidity, Gas sensor

Security: LiDAR, Stereo vision camera, 16 ToF and 1024 array IRda

Interaction: Lights, HMI

Dimensions

Length: 33.00in (840mm)

Width: 18.50in (470mm)

Height: 44.00in (1120mm)

Weight with battery: 50.7lb (23kg)

Shelf Dimensions: 24.4in x 14.6in (620mm x 370mm)



Model

C2 Large

Features

Max. Payload: 100 kg (33.3 kg per shelf)

Max. Speed: 8 Km/h

Navigation: Two-wheel drive, differential

Positioning Mode: Single LiDAR system and stereo vision camera

Communication: WI-FI and bluetooth 5.3

Battery endurance: 12 to 16 hours

Sensors (optional): Pressure, Humidity, Gas sensor

Security: LiDAR, Stereo vision camera, 16 ToF and 1024 array IRda

Interaction: Lights, HMI

Dimensions

Length: 40.50in (1030mm)

Width: 24.42in (620mm)

Height: 41.50in (1055mm)

Weight with battery: 61.7lb (28kg)

Shelf Dimensions: 32.25in x 20.5in (820mm x 520mm)



KEMARO

KEMARO's objective is to revolutionize the cleaning of industrial floors by enhancing health protection, ecological sustainability, and cost savings. They aim to provide innovative solutions that optimize cleaning processes in logistics and industrial companies, thereby contributing to a safer and more efficient working environment.



KEMARO

K900

Features

Cleaning Speed: 0.7 m/s

Cleaning area: 1000m² / hora

Navigation: Two-wheel drive, differential

Positioning Mode: Advanced SLAM via LiDAR and 3D sensor.

Communication: WI-FI hotspot, LTE

Endurance: 5 hours fully charge

Battery type: lithium-Ion / 36 V

Security: LiDAR, SLAM and 3D sensor.

Dimensions

Length: 79 cm

Width: 72 cm

Height: 35 cm

Weight with battery: 32 kg

Max. Dirt Tank cap: 35 L



LG ROBOTICS

LG Bussines Solutions is part of the big family LG but dedicated to solutions for industry for plants of production to solutions for hotels, restaurants and hospitals, with roots in Korea .



LG CLOi

CarryBot

Mounting type

Features

Max. Payload: 30 kg (66 lb) – **60 kg (132 lb) Rolltainer**

Max. Speed: 1.2 m/s

Communication: WI-FI

Battery endurance: 18 hours

Sensors (optional): SToF / LiDAR / RGBD Camera / Magnet

Interaction: HMI, Lights, sounds

Dimensions

Length: 510 mm

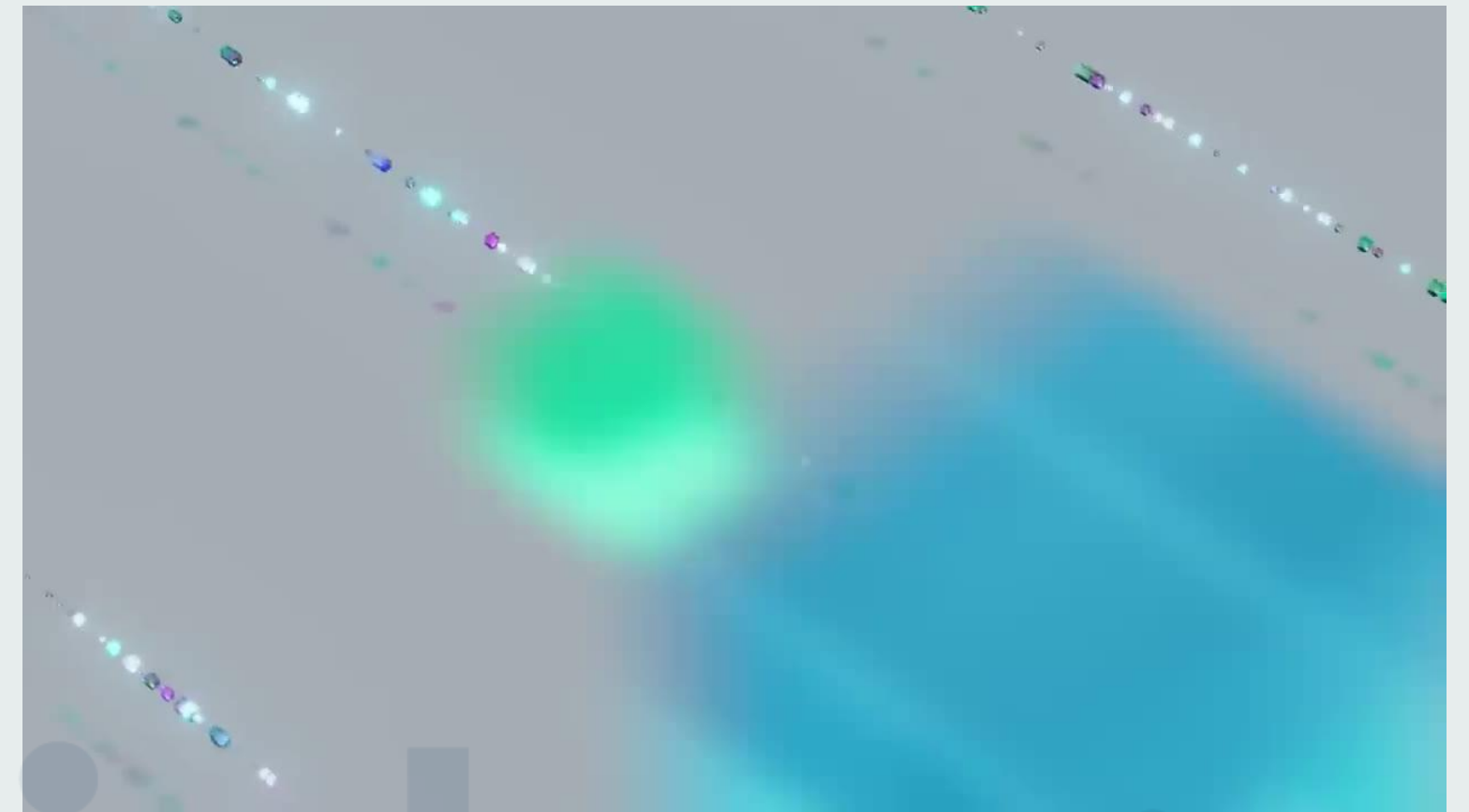
Width: 510 mm

Height: 1,480 mm – **1340 mm Rolltainer**

AMR Dimension with Shelf: 510 x 510 x 1,480 mm

AMR Dimension with Shelf 2: 760 x 510 x 1,480 mm

AMR Dimension with Rolltainer: 760 x 720 x 1,340 mm



LG CLOi GuideBot

Features

Max. Payload: 60 kg
Driving Speed: 1.0 m/s
Communication: LTE, WiFi
Battery endurance: 9 hours
Sensors (optional): LiDAR / ToF / Bumper / Magnetic
Interaction: HMI, Lights, sounds

Dimensions

Length: 510 mm
Width: 510 mm
Height: 1,500 mm
Weight: 80 Kg



LG CLOi ServeBot

Features

Max. Payload: 10 kg each drawer

Driving Speed: 1.2 m/s

Communication: LTE, WiFi

Battery endurance: 11 hours

Sensors: ToF, LiDAR, RGBD camera, Load Cell

Interaction: HMI, Lights, sounds

Dimensions

Length: 560 mm

Width: 550 mm

Height: 1,370 mm

Weight: 51 Kg



YOUIBOT

Youibot is an innovative industrial robot company with core algorithms for autonomous mobile robots, such as SLAM navigation, and rich experience in unmanned transformation of business scenarios.

Based on AMRs, Youibot Robotics is committed to providing comprehensive products and solutions for smart manufacturing, smart inspection and maintenance across a wide range of industries.



Plataform Series

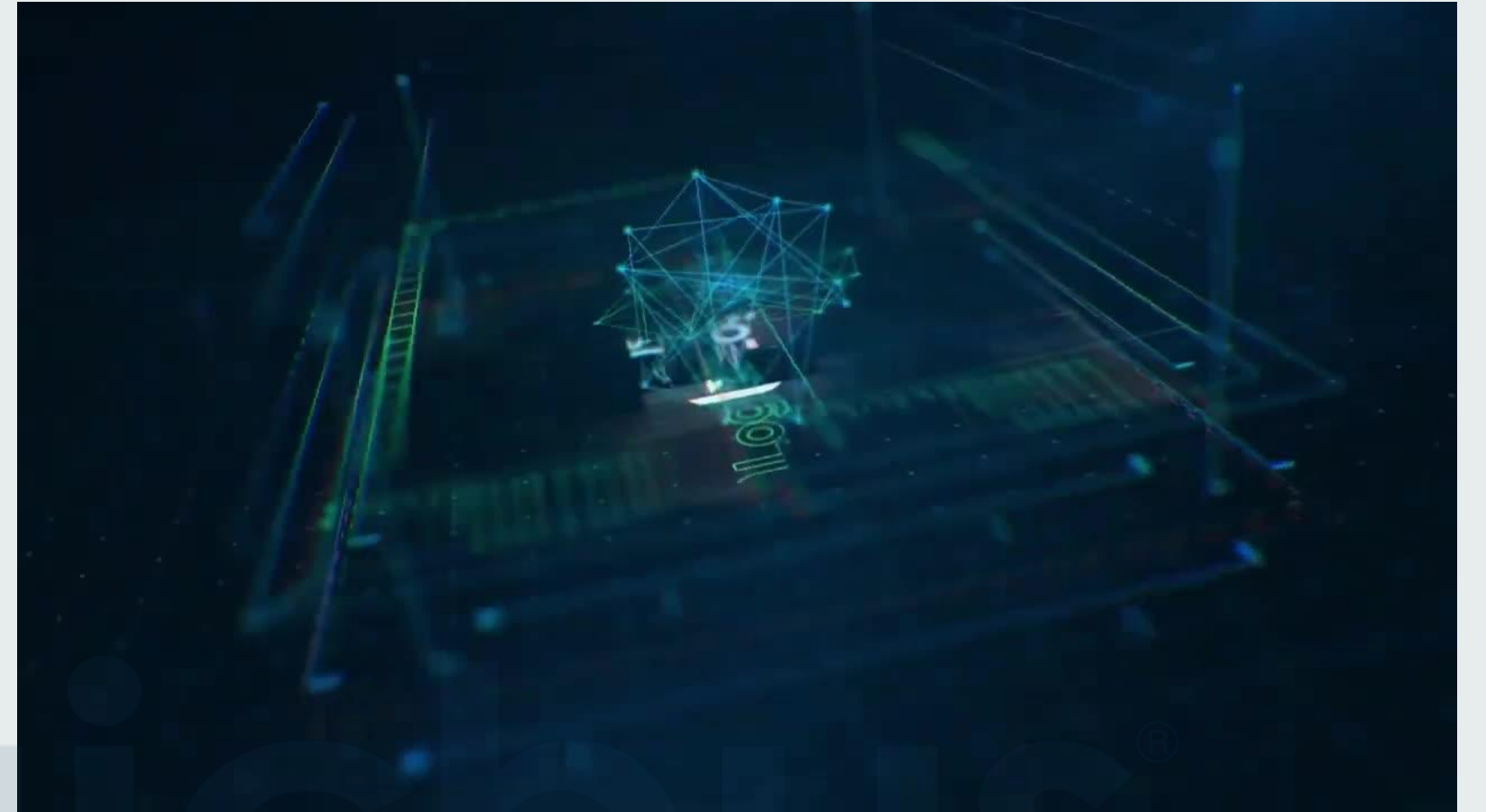
Model P200

Features

Max. payload: 200 Kg
Driving Speed: 1.5 m/s
Navigation: Two-wheel drive, network and hybrid.
Positioning Mode: Laser SLAM / Laser & QR codeFusion
Endurance: 8 hours fully charge
Security: LiDAR, emergency Stop Button, Anti-collision strip.
Interaction: Lights, sound (warning)

Dimensions

Length: 1020 mm
Width: 655 mm
Height: 280 mm
Weight: 180 Kg



Plataform Series

Model B300

Features

Max. payload: 300 Kg

Driving Speed: 1.5 m/s

Navigation: Two-wheel drive, network and hybrid.

Positioning Mode: Laser SLAM / Laser & QR codeFusion

Endurance: 8 hours fully charge

Security: LiDAR, emergency Stop Button, Anti-collision strip.

Interaction: Lights, sound (warning)

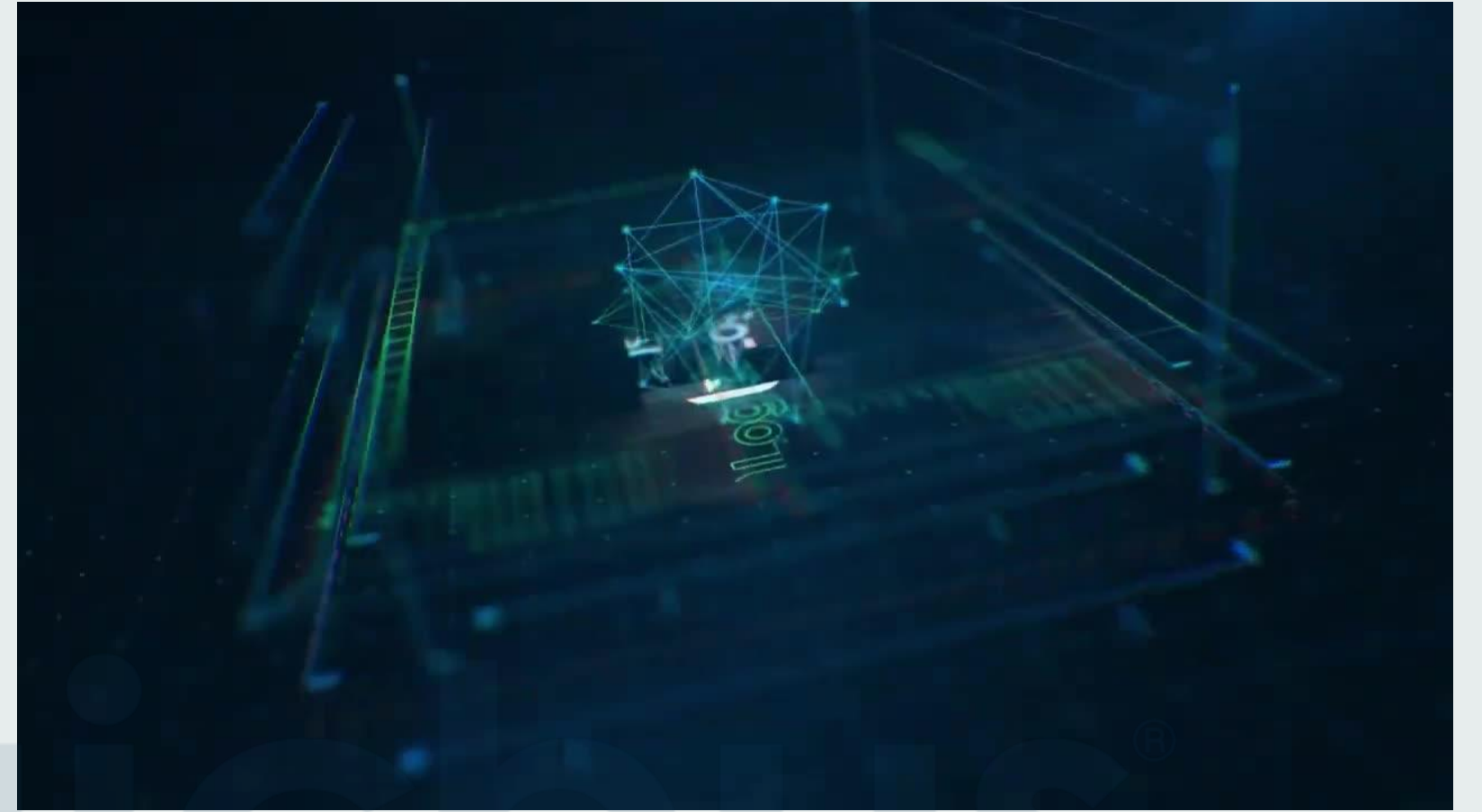
Dimensions

Length: 780 mm

Width: 550 mm

Height: 290 mm

Weight: 120 Kg



Lifting Series

Model L300

Features

Max. payload: 300 Kg
Driving Speed: 1.5 m/s
Navigation: Two-wheel drive, network and hybrid.
Positioning Mode: Laser SLAM / Laser & QR codeFusion
Endurance: 8 hours fully charge
Security: LiDAR, emergency Stop Button, Anti-collision strip.
Interaction: Lights, sound (warning)

Dimensions

Length: 800 mm
Width: 619 mm
Height: 330 mm
Weight: 180 Kg



Lifting Series

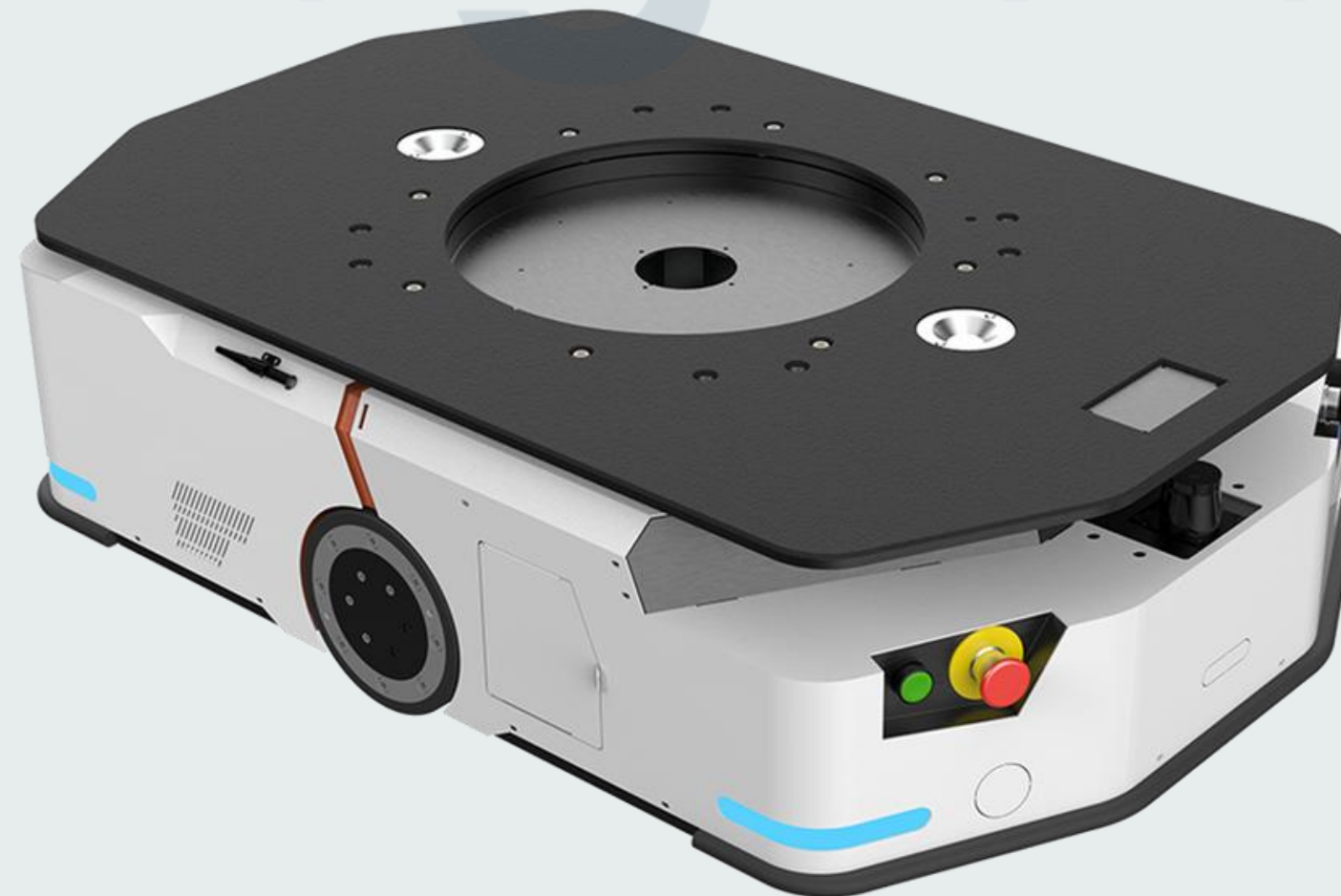
Model L1000

Features

Max. payload: 1000 Kg
Driving Speed: 1.5 m/s
Navigation: Two-wheel drive, network and hybrid.
Positioning Mode: Laser SLAM / Laser & QR codeFusion
Endurance: 8 hours fully charge
Security: LiDAR, emergency Stop Button, Anti-collision strip.
Interaction: Lights, sound (warning)

Dimensions

Length: 1061 mm
Width: 838 mm
Height: 330 mm
Weight: 310 Kg



Automatic Trolley Series

Model AT100

Features

Max. payload: 100 Kg
Driving Speed: 1.5 m/s
Navigation: Two-wheel drive, network and hybrid.
Positioning Mode: Laser SLAM / Laser & QR codeFusion
Endurance: 8 hours fully charge
Security: LiDAR, emergency Stop Button, Anti-collision strip.
Interaction: Lights, sound (warning)

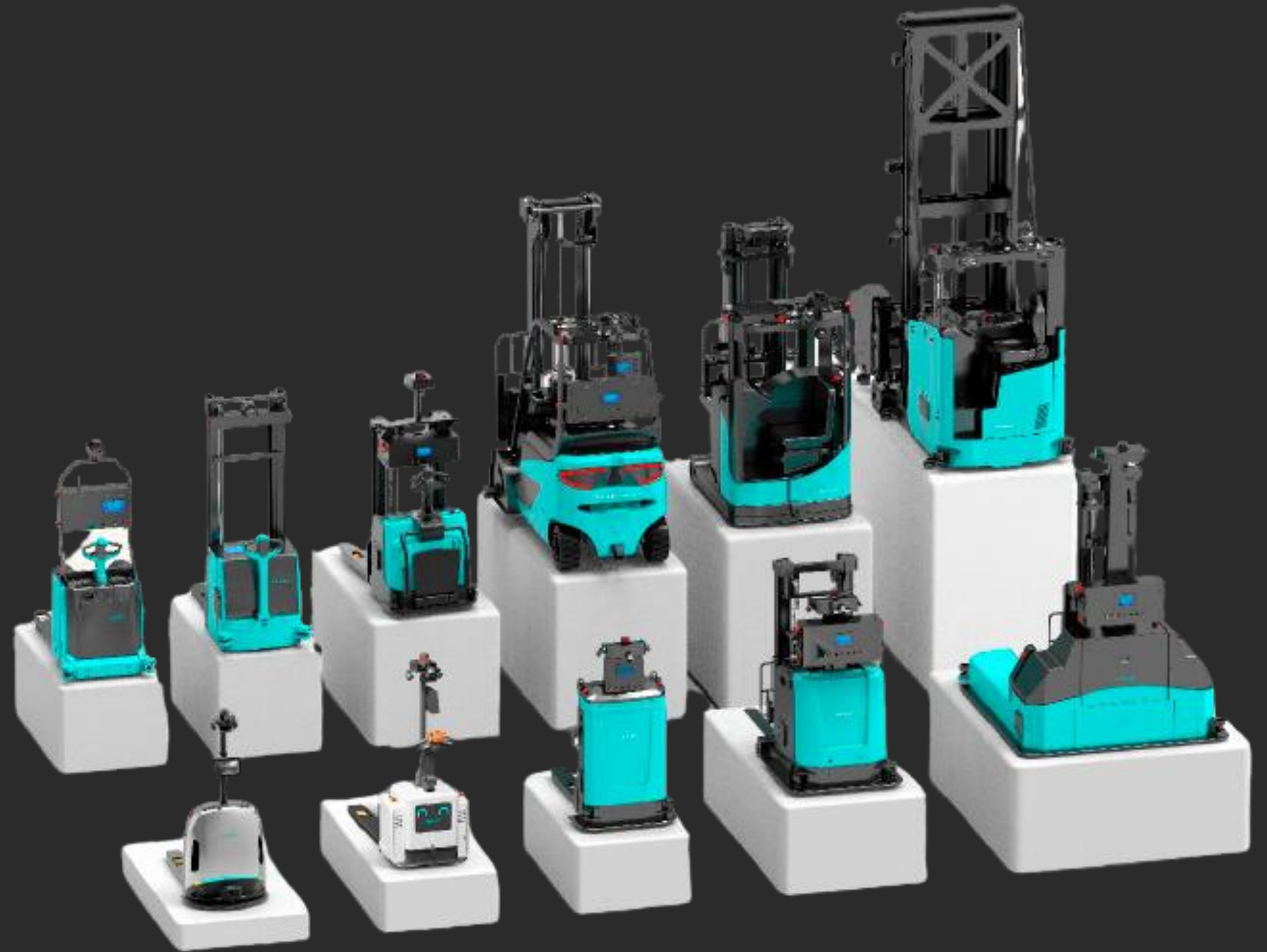
Dimensions

Length: 650 mm
Width: 630 mm
Height: 1610 mm
Weight: 120 Kg



Multiway

Multiway Robotics is a leading provider of intelligent intralogistics solutions, with a mission to establish more efficient working models and enhance productivity through continuous innovation. Specializing in advanced robotics and AI, Multiway offers unmanned forklifts, four-way shuttles, and integrated software platforms like Multiway Cloud, WMS, and RCS to optimize intralogistics operations.



Pallet Truck

Model WeFront X20/s

Features

Max. payload: 2000 Kg

Driving Speed: 1.1 m/s No load / 1.3 m/s Full load

Navigation: Two-wheel drive, differential, reverse, turn.

Positioning Mode: Laser, stereo camera,

Communication: WI-FI, 5G (opc), optical com (opc)

Endurance: 6 hours fully charge

Security: Bottom Radar, stereo camera, anti collisionstrip, emergency stop button, sound (warning), position lamp

Interaction: HMI, Lights, sound (warning)

Dimensions

Length: 1613 mm

Width: 735 mm

Height: 1940 / 2140 / 2340 mm

Weight: 480 Kg



Pallet Truck

Model Multiway X1

Features

Max. payload: 2000 Kg

Driving Speed: 1.1 m/s No load / 1.3 m/s Full load

Navigation: Two-wheel drive, differential, reverse, turn.

Positioning Mode: Laser, stereo camera,

Communication: WI-FI, 5G (opc), optical com (opc)

Endurance: 6 hours fully charge

Security: Bottom Radar, stereo camera, anti collisionstrip, emergency stop button, sound (warning), position lamp

Interaction: HMI, Lights, sound (warning)

Dimensions

Length: 1610 mm

Width: 850 mm

Height: 1950 / 2150 / 2350 mm

Weight: 440 Kg



Pallet Stacker

Model Multiway α2

Features

Max Lifting Height: 3000 mm

Max. payload: 1600 Kg

Driving Speed: 2.2 m/s

Navigation: 3-wheel drive, differential, reverse, turn.

Positioning Mode: Laser, stereo camera, reflector

Communication: WI-FI, 5G (opc), optical com (opc)

Endurance: 8 hours fully charge

Security: Stereo camera, anti collision strip, emergency stop button, sound (warning), position lamp, bottom obstacle avoidance radar

Interaction: HMI, Lights, sound (warning)

Dimensions

Length: 3450 mm

Width: 1575 mm

Height: 1950 / 2150 / 2350 mm

Weight: 440 Kg



Pallet Stacker

Model MW-SL14

Features

Max Lifting Height: 2500 mm

Max. payload: 1400 Kg

Driving Speed: 1.38 m/s

Navigation: 2-wheel drive, differential, reverse, turn.

Positioning Mode: Laser (op) , reflector

Communication: WI-FI, 5G (opc), optical com (opc)

Endurance: 8 hours fully charge

Security: Stereo camera, anti collision strip, emergency stop button, sound (warning), position lamp, bottom obstacle avoidance radar

Interaction: HMI, Lights, sound (warning)

Dimensions

Length: 1700 mm

Width: 1000 mm

Height: 1990 / 2350

Weight: 900 Kg



Counterbalanced Forklift

Model MW-SE15

Features

Max Lifting Height: 3000 mm

Max. payload: 1500 Kg

Driving Speed: 1.5 m/s

Navigation: 2-wheel drive, differential, reverse, turn.

Positioning Mode: Laser (op) , reflector

Communication: WI-FI, 5G (opc), optical com (opc)

Endurance: 8 hours fully charge

Security: Stereo camera, anti collision strip, emergency stop button, sound (warning), position lamp, bottom obstacle avoidance radar

Interaction: HMI, Lights, sound (warning)

Dimensions

Length: 1700 mm

Width: 1000 mm

Height: 1990 / 2350

Weight: 2800 Kg



Counterbalanced Forklift

Model MW-E35

Features

Max Lifting Height: 4500 mm

Max. payload: 3500 Kg

Driving Speed: 2.5 m/s

Navigation: 3-wheel drive, differential, reverse, turn.

Positioning Mode: Laser (op) , reflector

Communication: WI-FI, 5G (opc), optical com (opc)

Endurance: 10 hours fully charge

Security: Stereo camera, anti collision strip,

emergency stop button, sound (warning), position

lamp, bottom obstacle avoidance radar

Interaction: HMI, Lights, sound (warning)

Dimensions

Length: 3580 mm

Width: 1580 mm

Height: 2350

Weight: 5700 Kg



Counterbalanced Forklift

Model MW-Q20

Features

Max Lifting Height: 1500 mm

Max. payload: 1850 Kg

Driving Speed: 2.5 m/s

Navigation: 3-wheel drive, differential, reverse, turn.

Positioning Mode: Laser (op) , reflector

Communication: WI-FI, 5G (opc), optical com (opc)

Endurance: 10 hours fully charge

Security: Stereo camera, anti collision strip, emergency stop button, sound (warning), position lamp, bottom obstacle avoidance radar

Interaction: HMI, Lights, sound (warning)

Dimensions

Length: 3262 mm

Width: 1259 mm

Height: 2180 mm

Weight: 3700 Kg



Reack Truck

Model MW-R16

Features

Max Lifting Height: 4500 mm

Max. payload: 1600 Kg

Driving Speed: 2 m/s

Navigation: 3-wheel drive, differential, reverse, turn.

Positioning Mode: Laser (op) , reflector

Communication: WI-FI, 5G (opc), optical com (opc)

Endurance: 10 hours fully charge

Security: Stereo camera, anti collision strip, emergency stop button, sound (warning), position lamp, bottom obstacle avoidance radar

Interaction: HMI, Lights, sound (warning)

Dimensions

Length: 2555 mm

Width: 1455 mm

Height: 3910 / 2350 mm

Weight: 3390 Kg



Reach Truck

Model MW-R20S

Features

Max Lifting Height: 6300 mm

Max. payload: 2000 Kg

Driving Speed: 2 m/s

Navigation: 3-wheel drive, differential, reverse, turn.

Positioning Mode: Laser (op) , reflector

Communication: WI-FI, 5G (opc), optical com (opc)

Endurance: 10 hours fully charge

Security: Stereo camera, anti collision strip,

emergency stop button, sound (warning), position

lamp, bottom obstacle avoidance radar

Interaction: HMI, Lights, sound (warning)

Dimensions

Length: 2555 mm

Width: 1455 mm

Height: 3910 / 2350 mm

Weight: 4000 Kg



VNA Truck

Model MW-K16

Features

Max Lifting Height: 9000 mm

Max. payload: 1600 Kg

Driving Speed: 2.2 m/s

Navigation: 3-wheel drive, differential, reverse, turn.

Positioning Mode: Laser (op) , reflector

Communication: WI-FI, 5G (opc), optical com (opc)

Endurance: 10 hours fully charge

Security: Stereo camera, anti collision strip, emergency stop button, sound (warning), position lamp, bottom obstacle avoidance radar

Interaction: HMI, Lights, sound (warning)

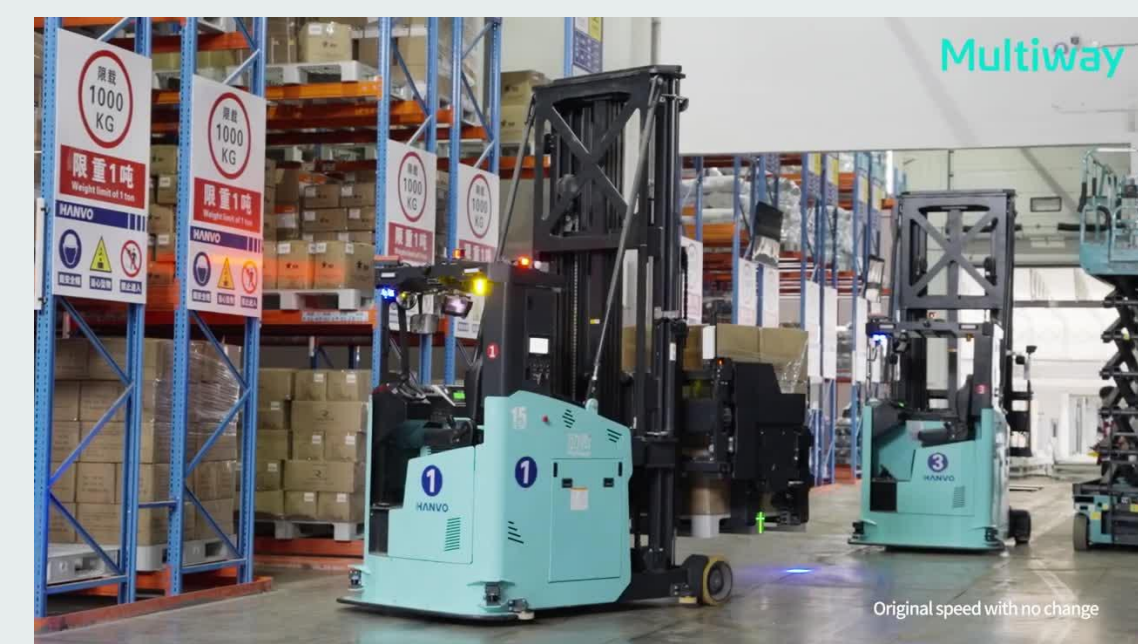
Dimensions

Length: 3455 mm

Width: 1575 mm

Height: 2935 / 4265 mm

Weight: 7260 Kg



SIDELOADER

Model MW-O20

Features

Max Lifting Height: 5000 mm

Max. payload: 2000 Kg

Driving Speed: 1.38 m/s

Navigation: 4-wheel drive, differential, reverse, turn.

Positioning Mode: Laser (op) , reflector

Communication: WI-FI, 5G (opc), optical com (opc)

Endurance: 8 hours fully charge

Security: Stereo camera, anti collision strip, emergency stop button, sound (warning), position lamp, bottom obstacle avoidance radar

Interaction: HMI, Lights, sound (warning)

Dimensions

Length: 2380 mm

Width: 2110 mm

Height: 2350 / 3444 mm

Weight: 3160 Kg



FOUR-WAY SHUTTLE

Model MW-Z15

Features

Max. payload: 1500 Kg

Speed: 1.5 m/s

Navigation: 8-wheel drive, differential, reverse, turn.

Positioning Mode: Laser

Communication: In develop timing

Security: Positioning fault, component fault and communication fault protection, anti-collision detection.

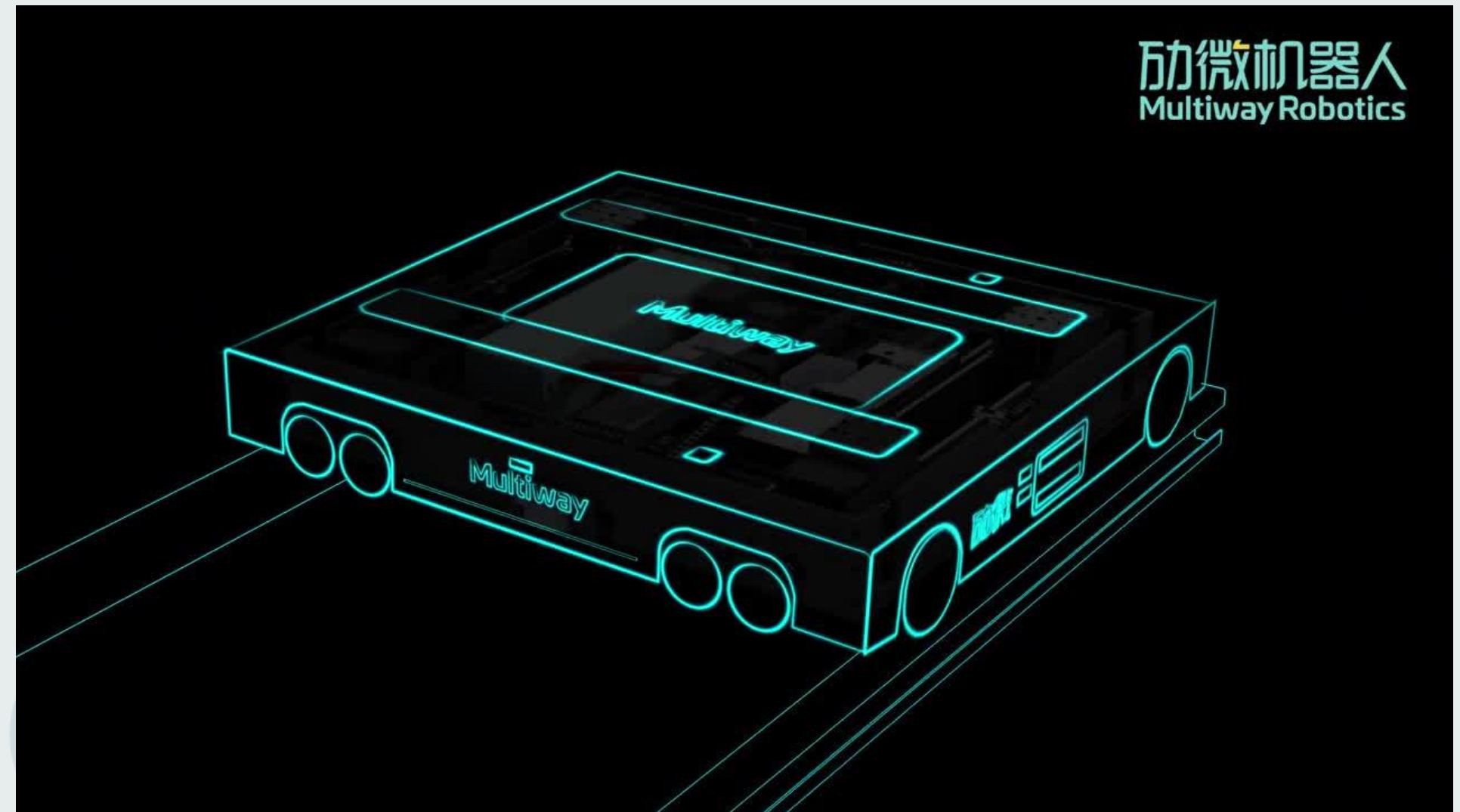
Dimensions

Length: 1300 mm

Width: 980 mm

Height: 136 mm

Weight: 400 Kg



COLD CHAIN FORKLIFTS

Model MW-SE20

Features

Max Lifting Height: 3000-4500 mm

Max. payload: 2000 Kg

Driving Speed: 1.5 m/s

Navigation: SLAM

Communication: WI-FI, 5G (opc),

Endurance: 6 hours fully charge

Security: Bottom obstacle radar, stereo camera, anti collision strip, emergency stop button sound and light warnings.

Interaction: HMI, Lights, sound (warning)

Dimensions

Length: 3025 mm

Width: 1145 mm

Height: 1950+100n -> 2350 mm



COLD CHAIN FORKLIFTS

Model MW-L14

Features

Max Lifting Height: 5400 mm

Max. payload: 1400 Kg

Driving Speed: 1.5 m/s

Navigation: SLAM

Communication: WI-FI, 5G (opc),

Endurance: 6 hours fully charge

Security: Bottom obstacle radar, stereo camera,
anti collision strip, emergency stop button
sound and light warnings.

Dimensions

Length: 2200 mm

Width: 1085 mm

Height: 2350/2815 mm



COLD CHAIN FORKLIFTS

Model MW-R16

Features

Max Lifting Height: 9500 mm

Max. payload: 1600 Kg

Driving Speed: 2 m/s

Navigation: SLAM

Communication: WI-FI, 5G (opc),

Endurance: 6 hours fully charge

Security: Bottom obstacle radar, stereo camera,
anti collision strip, emergency stop button
sound and light warnings.

Interaction: HMI

Dimensions

Length: 2620 mm

Width: 1550 mm

Height: 2350/3930 mm



COLD CHAIN FORKLIFTS

Model MW-R12XC

Features

Max Lifting Height: 7500 mm

Max. payload: 1200 Kg

Driving Speed: 2 m/s

Navigation: SLAM

Communication: WI-FI, 5G (opc),

Endurance: 6 hours fully charge

Security: Bottom obstacle radar, stereo camera,
anti collision strip, emergency stop button
sound and light warnings.

Interaction: HMI

Dimensions

Length: 2782 mm

Width: 1420 mm

Height: 3450 mm





ForwardX Robotics is a global leader in vision-driven Autonomous Mobile Robots (AMRs) and autonomous forklifts, providing innovative solutions to optimize material handling in warehouses and manufacturing. Their f(x) Fleet Manager software efficiently coordinates these solutions, empowering supply chain performance. With offices and partnerships worldwide, ForwardX enables businesses to enhance operations and maximize value.



FLEX Series

Model Flex 300-L

Features

Max. payload: 80 Kg

Driving Speed: 2 m/s

Navigation: Two-wheel drive, network and hybrid.

Communication: WI-FI, WI-FI 6, 4G/5G (opc)

Endurance: 8 hours fully charge

Positioning Mode: Laser SLAM/Visual

Semantics/Visual Tag (Optional)

Security: Movement Obstacle Perception, Low

Obstacle Perception, Safety Contact Edge,

Emergency Stop Button

Interaction: HMI, Lights, sound (warning)

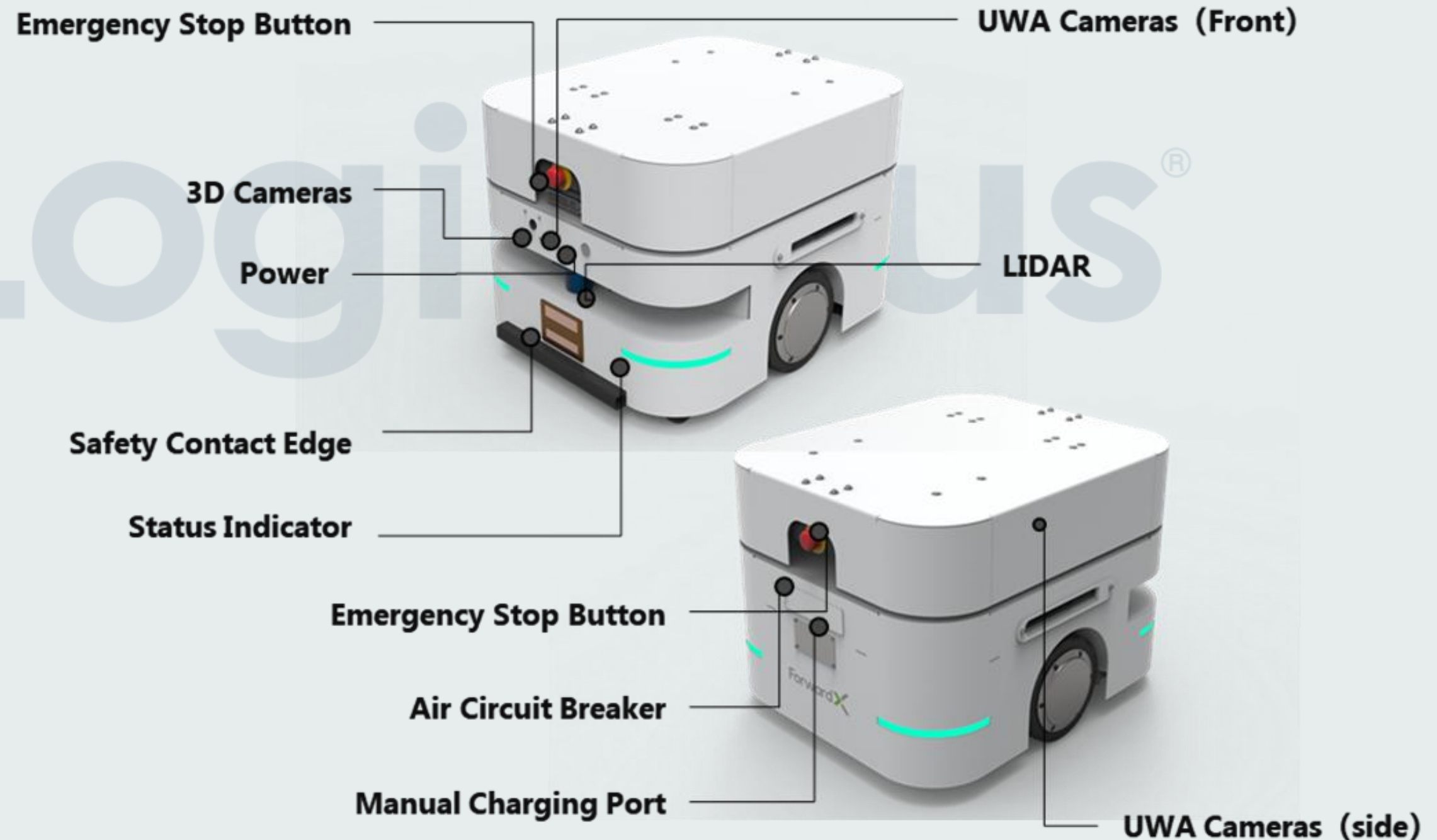
Dimensions

Length: 600 mm

Width: 480 mm

Height: 417 mm

Weight: 90 Kg



FLEX Series

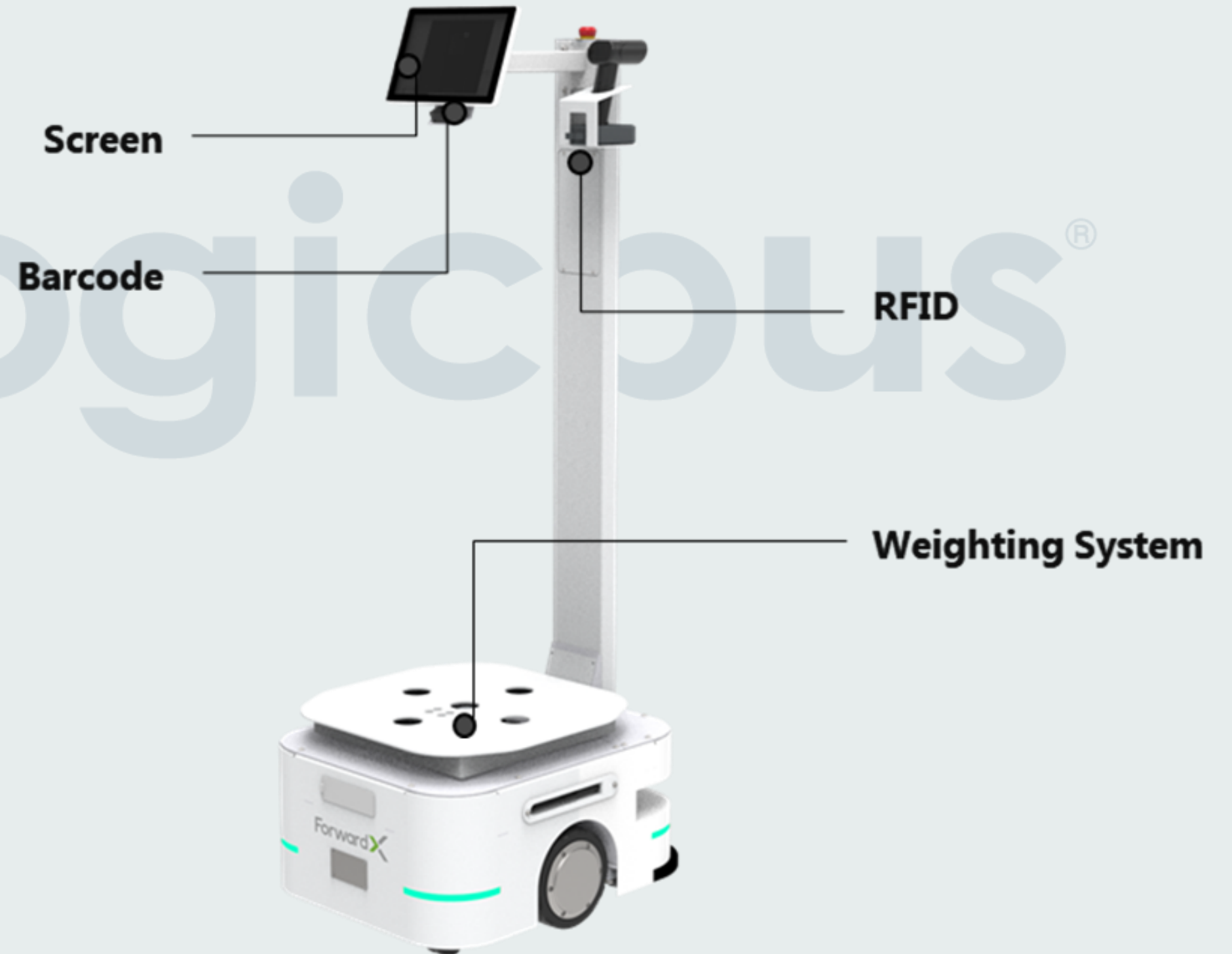
Model Flex 60-SW

Features

Max. payload: 80 Kg
Driving Speed: 2 m/s
Navigation: Two-wheel drive, network and hybrid.
Communication: WI-FI, WI-FI 6, 4G/5G (opc)
Endurance: 8 hours fully charge
Positioning Mode: Laser SLAM/Visual
Semantics/Visual Tag (Optional)
Security: Movement Obstacle Perception, Low
Obstacle Perception, Safety Contact Edge,
Emergency Stop Button
Interaction: HMI, Lights, sound (warning)

Dimensions

Length: 601 mm
Width: 488 mm
Height: 1500 mm
Weight: 90 Kg



FLEX Series

Model Flex 600 slim / 600-L Slim

Features

Max. payload: 600 Kg

Driving Speed: 2 m/s

Navigation: Two-wheel drive, network and hybrid.

Communication: WI-FI, WI-FI 6, 4G/5G (opc)

Endurance: 8 hours fully charge

Positioning Mode: Laser SLAM/Visual

Semantics/Visual Tag (Optional)

Security: Movement Obstacle Perception, Low

Obstacle Perception, Safety Contact Edge,

Emergency Stop Button

Interaction: HMI, Lights, sound (warning)

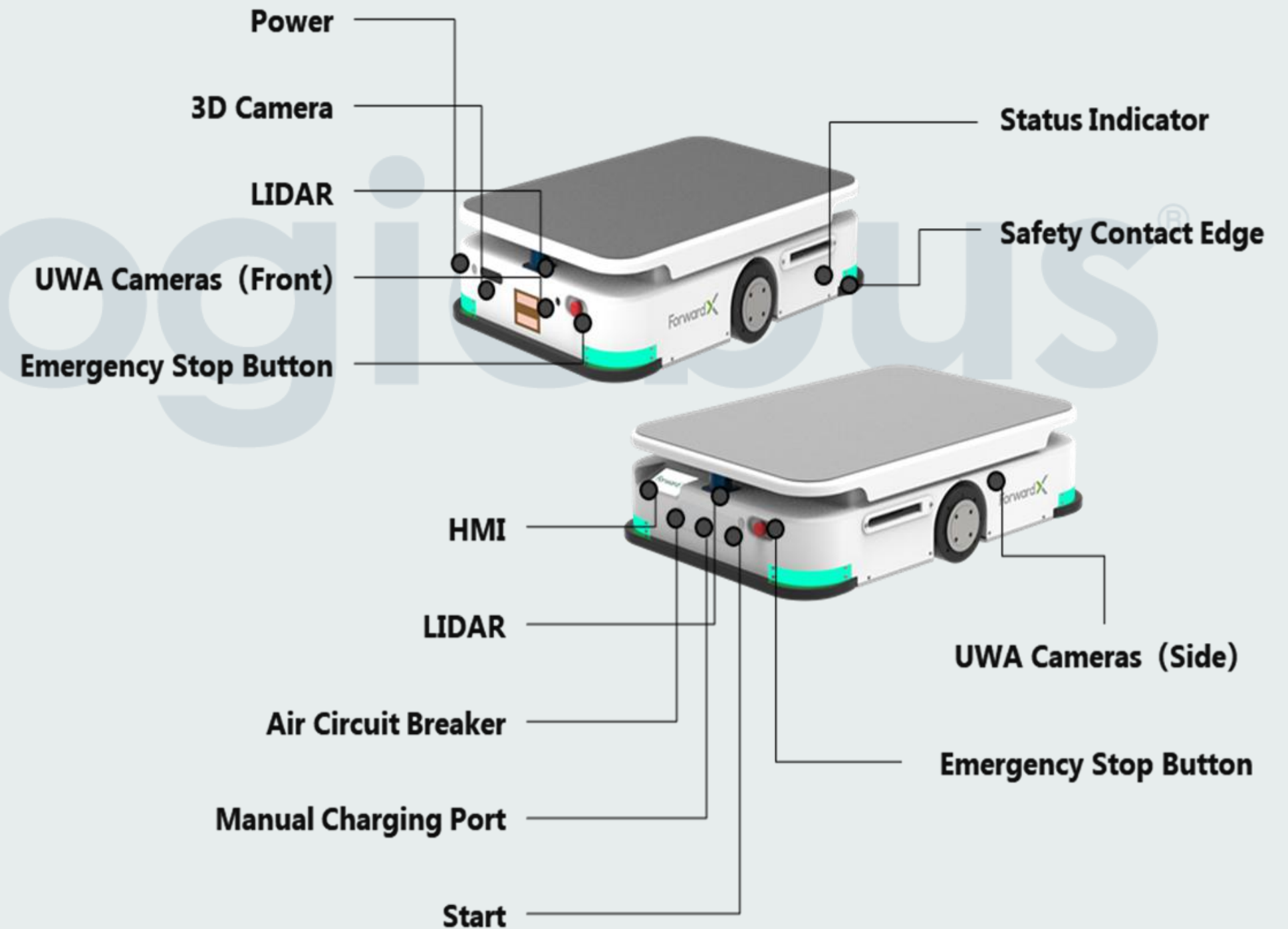
Dimensions

Length: 950 mm

Width: 650 mm

Height: 245 mm

Weight: 160 Kg



FLEX Series

Model Flex 600-S slim / 600-LS Slim

Features

Max. payload: 600 Kg

Driving Speed: 1.6 m/s

Navigation: Two-wheel drive, network and hybrid.

Communication: WI-FI, WI-FI 6, 4G/5G (opc)

Endurance: 8 hours fully charge

Positioning Mode: Laser SLAM/Visual

Semantics/Visual Tag (Optional)

Security: Movement Obstacle Perception, Low

Obstacle Perception, Safety Contact Edge,

Emergency Stop Button

Interaction: HMI, Lights, sound (warning)

Dimensions

Length: 950 mm

Width: 650 mm

Height: 1185 mm

Weight: 160 Kg

Screen



AMR

Model Max 600

Features

Max. payload: 600 Kg

Driving Speed: 1.5 m/s

Navigation: Two-wheel drive, network and hybrid.

Communication: WI-FI, WI-FI 6, 4G/5G (opc)

Endurance: 8 hours fully charge

Positioning Mode: Laser SLAM/Visual

Semantics/Visual Tag (Optional)

Security: Movement Obstacle Perception, Low

Obstacle Perception, Safety Contact Edge,

Emergency Stop Button

Interaction: HMI, Lights, sound (warning)

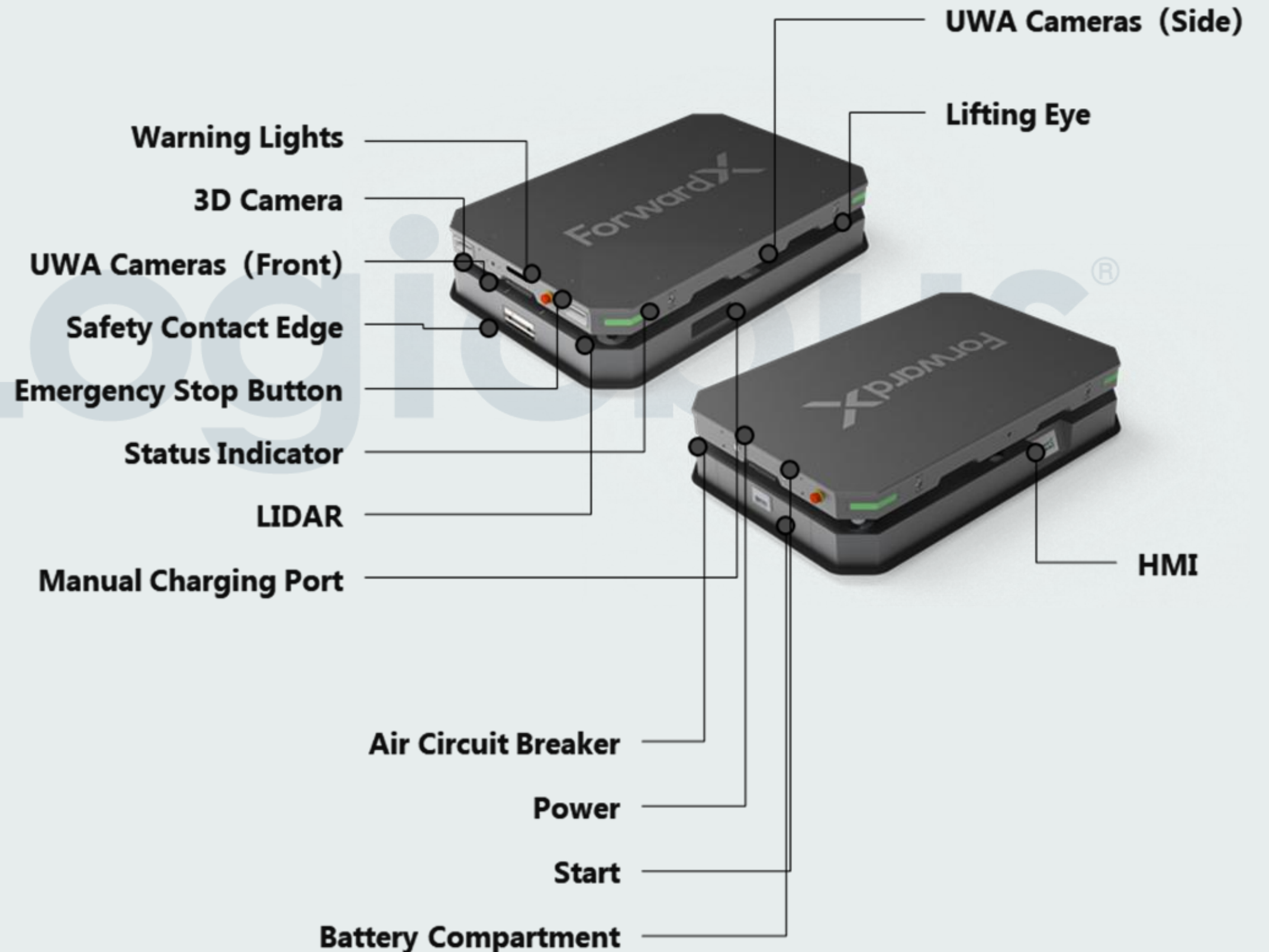
Dimensions

Length: 1380 mm

Width: 900 mm

Height: 320 mm

Weight: 260 Kg



AMR

Model Max 1500-L Slim

Features

Max. payload: 1500 Kg

Driving Speed: 1.1 m/s

Navigation: Two-wheel drive, network and hybrid.

Communication: WI-FI, WI-FI 6, 4G/5G (opc)

Endurance: 8 hours fully charge

Positioning Mode: Laser SLAM/Visual

Semantics/Visual Tag (Optional)

Security: Movement Obstacle Perception, Low

Obstacle Perception, Safety Contact Edge,

Emergency Stop Button

Interaction: HMI, Lights, sound (warning)

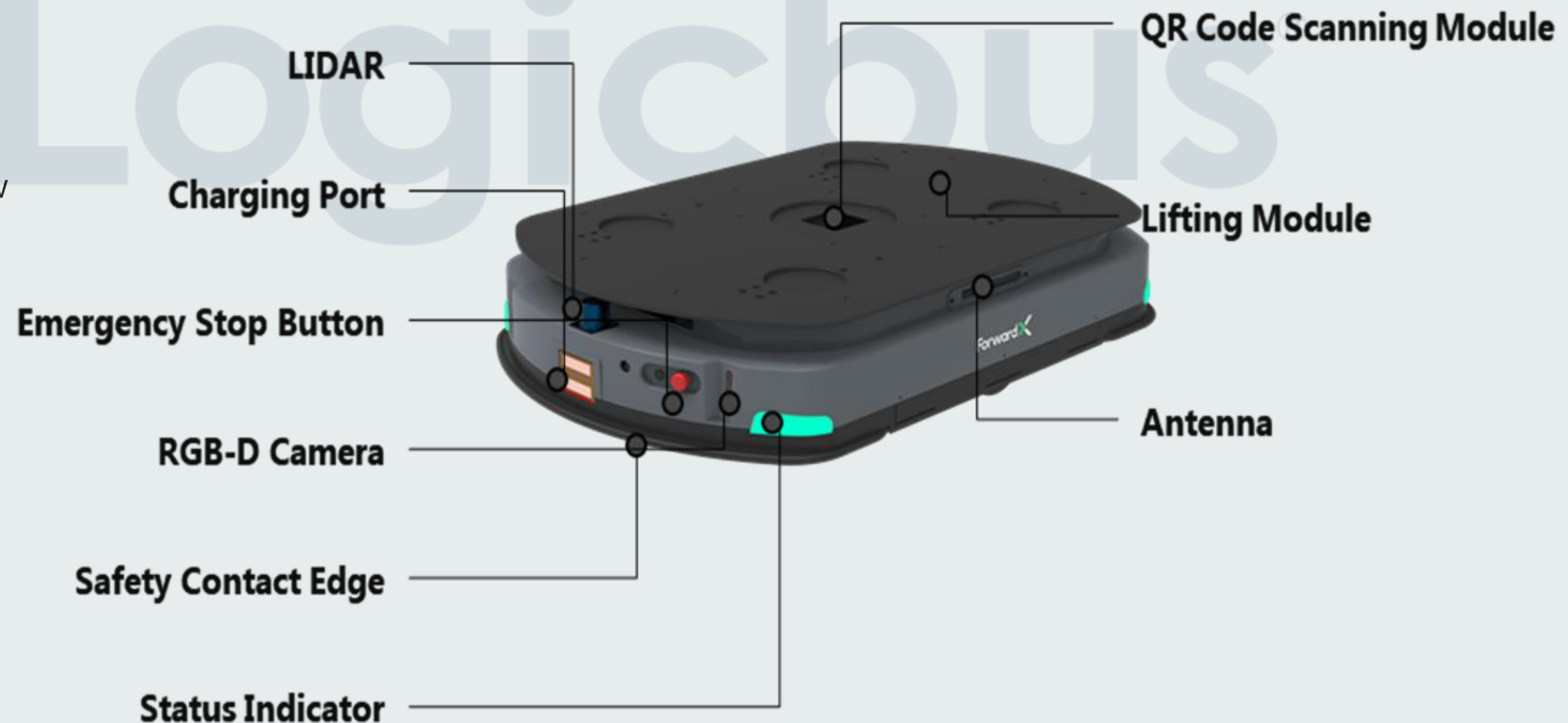
Dimensions

Length: 1250 mm

Width: 850 mm

Height: 245 mm

Weight: 250 Kg



AMR

Model Max O2500-L

Features

Max. payload: 500 Kg

Driving Speed: 1.1 m/s

Navigation: Two-wheel drive, network and hybrid.

Communication: WI-FI, WI-FI 6, 4G/5G (opc)

Endurance: 8 hours fully charge

Positioning Mode: Laser SLAM/Visual

Semantics/Visual Tag (Optional)

Security: Movement Obstacle Perception, Low

Obstacle Perception, Safety Contact Edge,

Emergency Stop Button

Interaction: HMI, Lights, sound (warning)

Dimensions

Length: 2154 mm

Width: 1154 mm

Height: 310 mm

Weight: 700 Kg



AMR

Model Max Lynx U1000

Features

Max. payload: 1000 Kg

Driving Speed: 1.1 m/s

Navigation: Two-wheel drive, network and hybrid.

Communication: WI-FI, WI-FI 6, 4G/5G (opc)

Endurance: 7 hours fully charge

Positioning Mode: Laser SLAM/Visual

Semantics/Visual Tag (Optional)

Security: Movement Obstacle Perception, Low

Obstacle Perception, Safety Contact Edge,

Emergency Stop Button

Interaction: HMI, Lights, sound (warning)

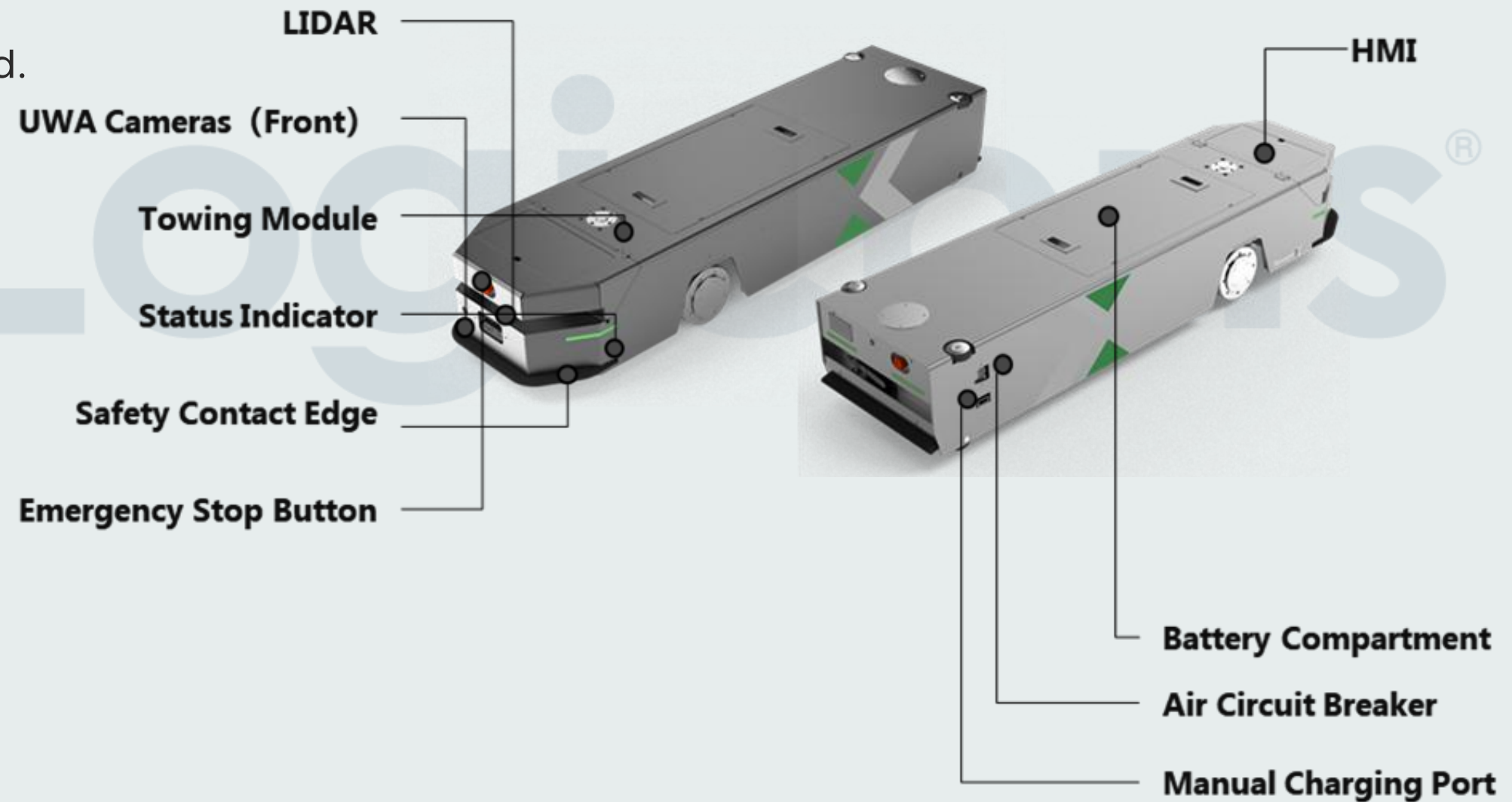
Dimensions

Length: 1250-1610 mm

Width: 440 mm

Height: 285 mm

Weight: 240 Kg



AMR

Model Max Apex 1400-L

Features

Max. Fork Height: 1600 mm

Max. payload: 1400 Kg

Driving Speed: 1.6 m/s

Endurance: 10 hours fully charge

Positioning Mode: Lidar SLAM/Visual
Semantics/Visual Tag (Optional)

Security: 3D Obstacle avoidance, safety contact
edge, emergency stop button.

Interaction: HMI, Lights, sound (warning)

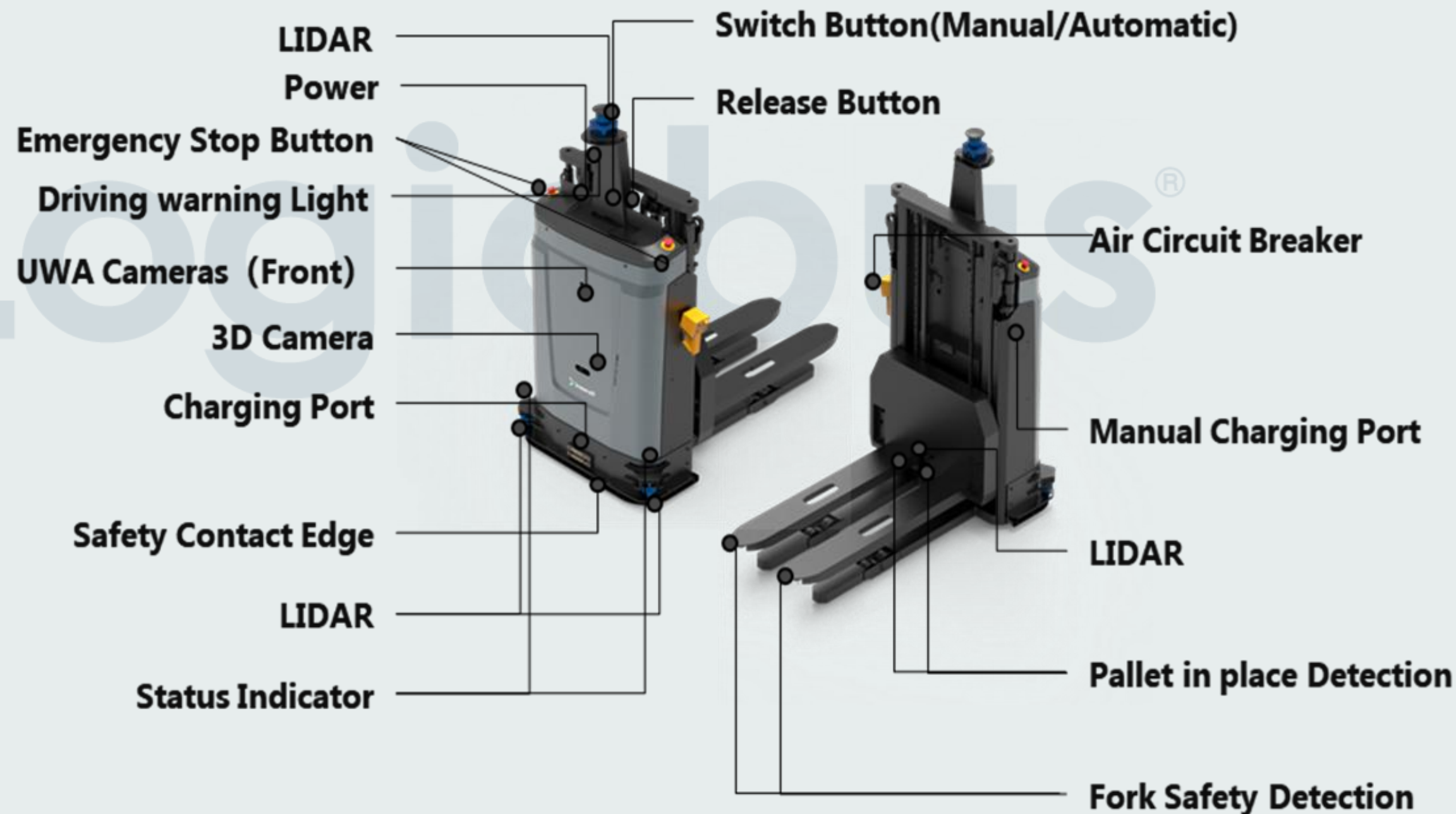
Dimensions

Length: 1760 mm

Width: 1010 mm

Height: 1895 mm

Weight: 880 Kg



AMR

Model Max Apex 2000

Features

Max. Fork Height: 195 mm

Max. payload: 2000 Kg

Driving Speed: 1.39 m/s

Navigation: Two-wheel drive, network and hybrid.

Endurance: 8 hours fully charge

Positioning Mode: Lidar SLAM/Visual
Semantics/Visual Tag (Optional)

Security: 3D Obstacle avoidance, safety contact
edge, emergency stop button.

Interaction: HMI, Lights, sound (warning)

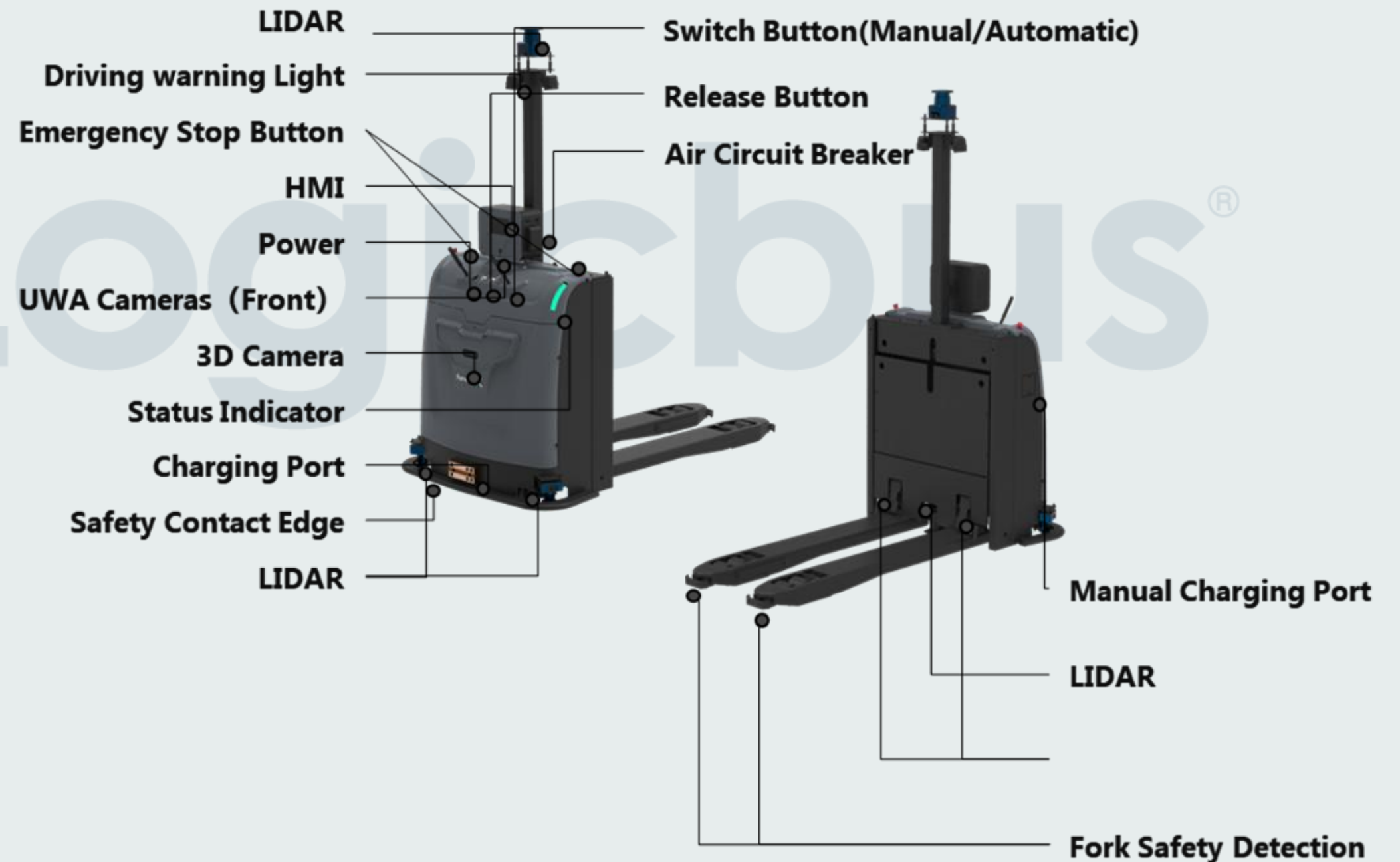
Dimensions

Length: 1714 mm

Width: 964 mm

Height: 1895 mm

Weight: 420 Kg



AMR

Model Max Apex C1500-L

Features

Max. Fork Height: 3000 mm

Max. payload: 1500 Kg

Driving Speed: 1.5 m/s

Navigation: Two-wheel drive, network and hybrid.

Endurance: 8 hours fully charge

Positioning Mode: Lidar SLAM/Visual

Semantics/Visual Tag (Optional)

Security: 3D Obstacle avoidance, safety contact edge, emergency stop button.

Interaction: HMI, Lights, sound (warning), remote control.

Dimensions

Length: 2470 mm

Width: 1112 mm

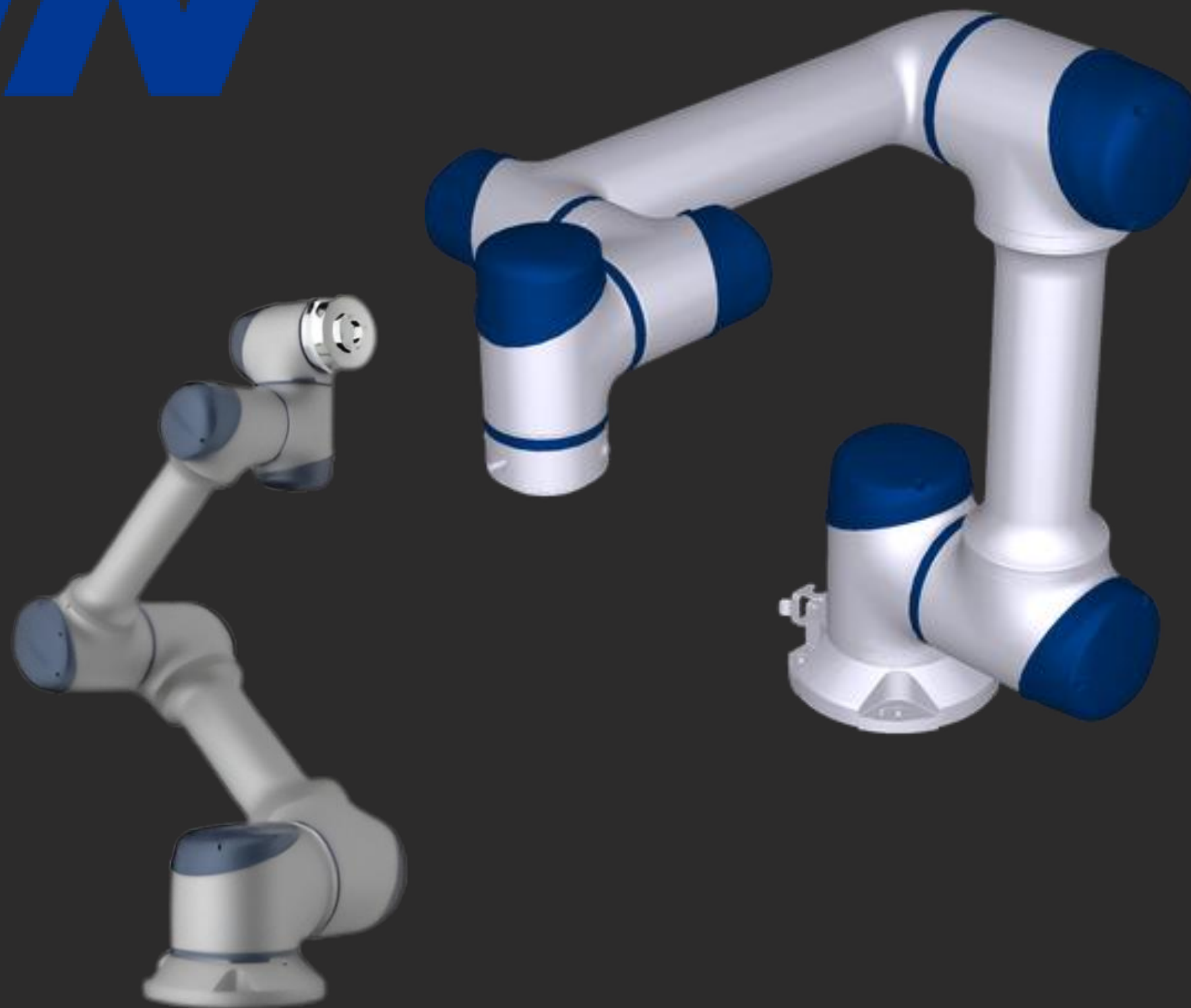
Height: 2200 mm

Weight: 2700 Kg



SIASUN

Founded in 2000, SIASUN, part of the Chinese Academy of Sciences, is a leader in robotics with the world's most comprehensive product line. Headquartered in Shenyang, with offices in Shanghai, Beijing, Hong Kong, and Singapore, it has a strong R&D and service network across China. With over 4,000 R&D professionals, SIASUN ranks third globally in robotics, experiencing the fastest growth in the sector.



GCR3-618-Series Cobot

Features

Max. payload: 3 Kg

Degrees of freedom: 6

Max TCP Speed: 1m/s

Max Straight-line Speed: 0.8m/s

Reach: 618mm

Repeatability: $\pm 0.05\text{mm}$

Power Suply: 100-240VCA 47-63Hz 10A

Power Consumption: 200W

Ambient Temperature Range: $-10^{\circ}\text{C}\sim 45^{\circ}\text{C}$

Storage Temperature Range: $-40^{\circ}\text{C}\sim 55^{\circ}\text{C}$

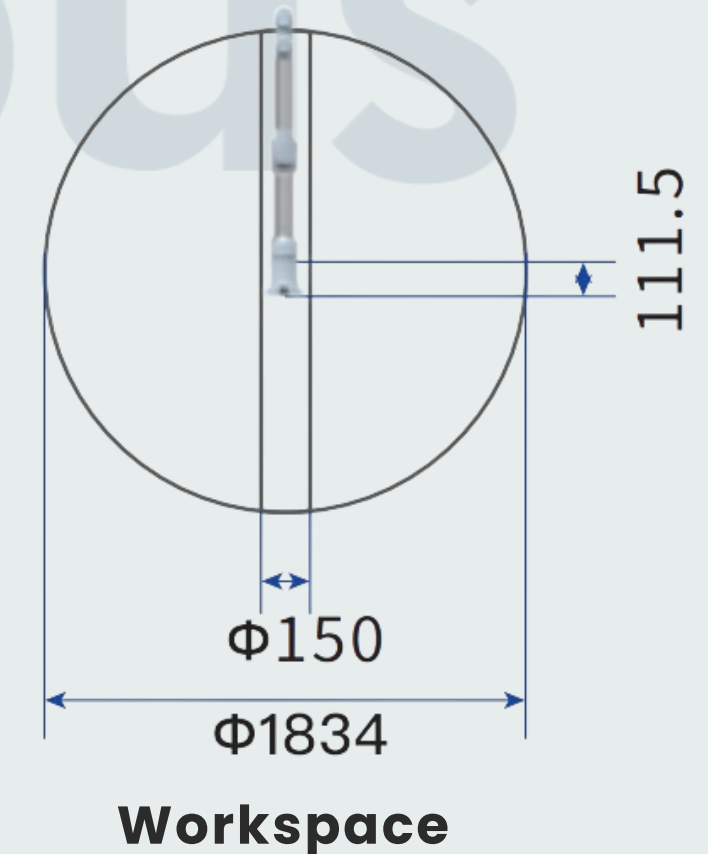
IP Class: IP54

Dimensions

Length: 769 mm

Width: 315 mm

Height: 150 mm



GCR5-910-Series Cobot

Features

Max. payload: 5 Kg

Degrees of freedom: 6

Max TCP Speed: 3.6m/s

Max Straight-line Speed: 1.5m/s

Reach: 917mm

Repeatability: $\pm 0.03\text{mm}$

Power Suply: 100-240VCA 47-63Hz 10A

Power Consumption: 200W

Ambient Temperature Range: $-10^{\circ}\text{C} \sim 45^{\circ}\text{C}$

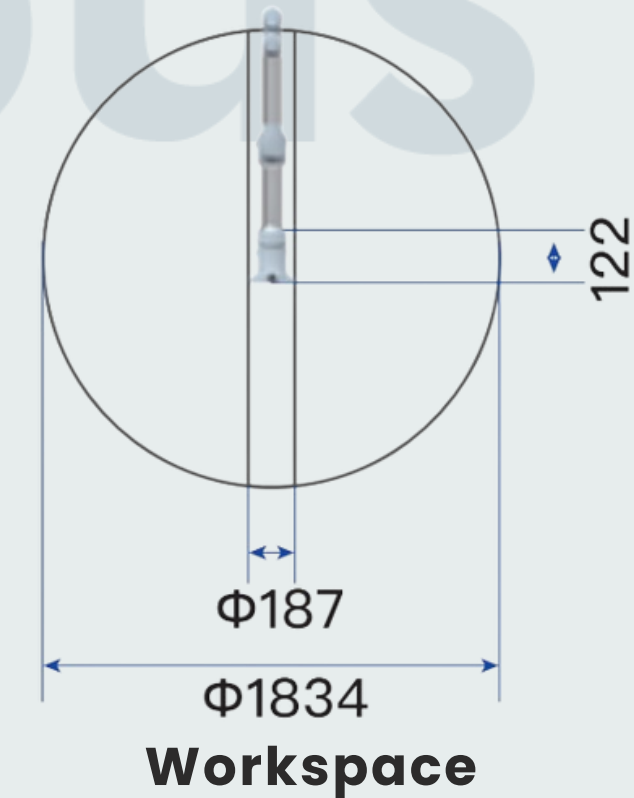
IP Class: IP54

Dimensions

Length: 1100 mm

Width: 330 mm

Height: 200 mm



GCR7-910-Series Cobot

Features

Max. payload: 7 Kg

Degrees of freedom: 6

Max TCP Speed: 3.6m/s

Max Straight-line Speed: 1.5m/s

Reach: 917mm

Repeatability: $\pm 0.03\text{mm}$

Power Suply: 100-240VCA 47-63Hz 10A

Power Consumption: 200W

Ambient Temperature Range: $-10^{\circ}\text{C} \sim 45^{\circ}\text{C}$

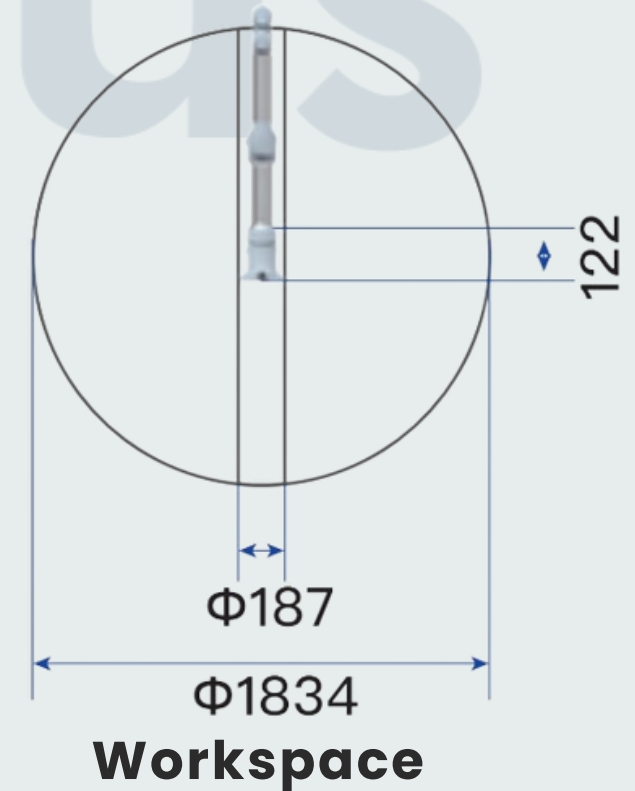
IP Class: IP54

Dimensions

Length: 1100 mm

Width: 330 mm

Height: 200 mm



GCR10-1300-Series Cobot

Features

Max. payload: 10 Kg

Degrees of freedom: 6

Max TCP Speed: 3.8m/s

Max Straight-line Speed: 1.5m/s

Reach: 1300mm

Repeatability: $\pm 0.05\text{mm}$

Power Suply: 100-240VCA 47-63Hz 10A

Power Consumption: 400W

Ambient Temperature Range: $-10^{\circ}\text{C} \sim 45^{\circ}\text{C}$

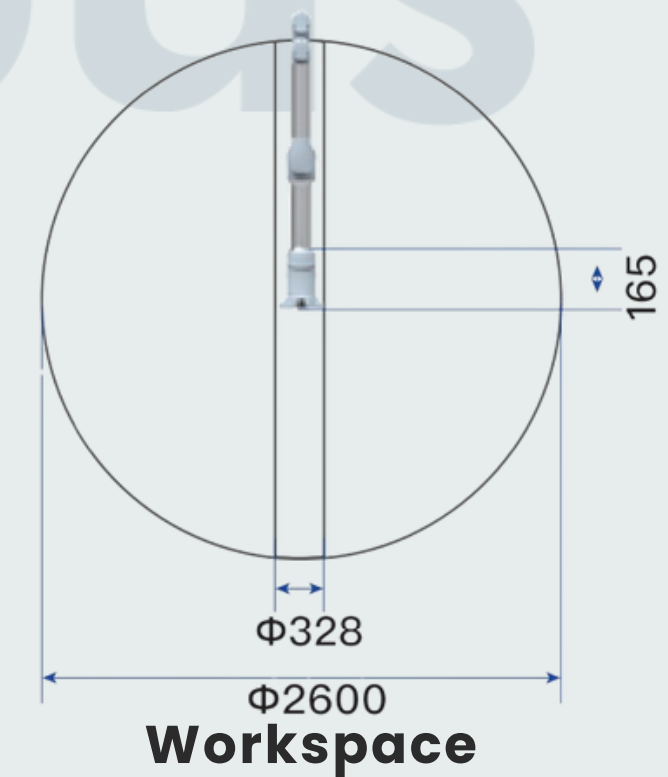
IP Class: IP54

Dimensions

Length: 1512 mm

Width: 388 mm

Height: 205 mm



GCR10-2000-Series Cobot

Features

Max. payload: 10 Kg

Degrees of freedom: 6

Max TCP Speed: 4.0m/s

Max Straight-line Speed: 1.8m/s

Reach: 2000mm

Repeatability: $\pm 0.05\text{mm}$

Power Suply: 100-240VCA 47-63Hz 10A

Power Consumption: 500W

Ambient Temperature Range: $-10^{\circ}\text{C}\sim 45^{\circ}\text{C}$

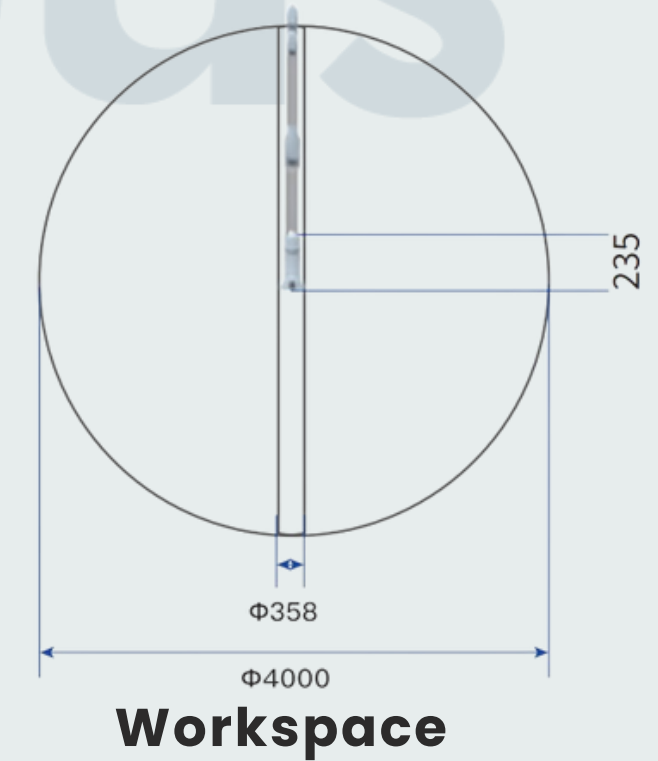
IP Class: IP54

Dimensions

Length: 2300 mm

Width: 388 mm

Height: 205 mm



GCR12-1300-Series Cobot

Features

Max. payload: 12 Kg

Degrees of freedom: 6

Max TCP Speed: 3.8m/s

Max Straight-line Speed: 1.5m/s

Reach: 1300mm

Repeatability: $\pm 0.05\text{mm}$

Power Suply: 100-240VCA 47-63Hz 10A

Power Consumption: 500W

Ambient Temperature Range: $-10^{\circ}\text{C}\sim 45^{\circ}\text{C}$

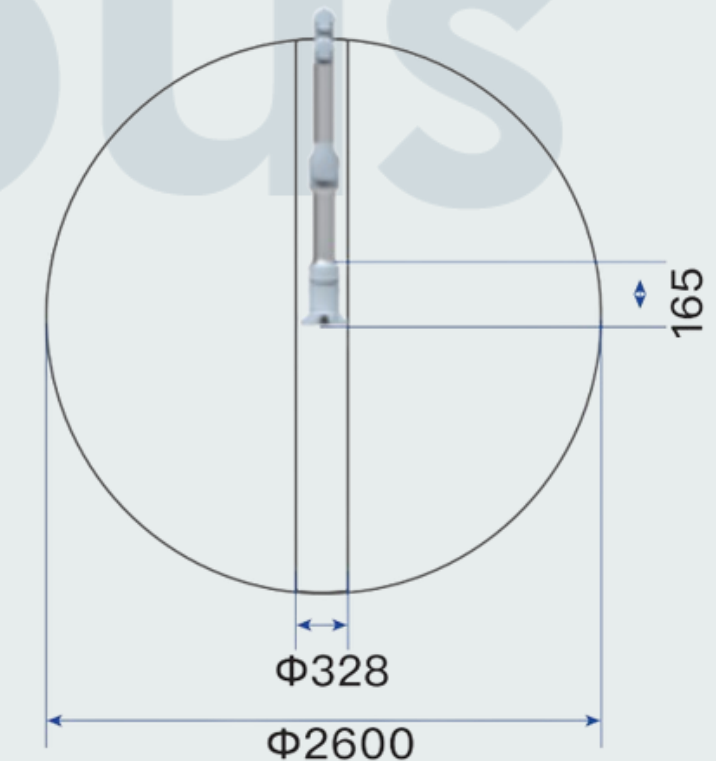
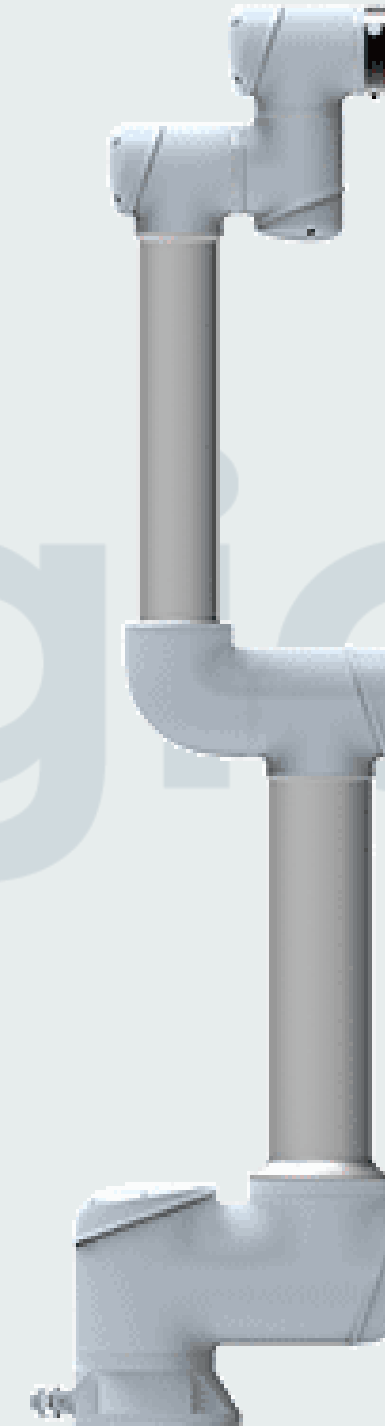
IP Class: IP54

Dimensions

Length: 1512 mm

Width: 388 mm

Height: 205 m



Workspace

GCR14-1400-Series Cobot

Features

Max. payload: 14 Kg

Degrees of freedom: 6

Max TCP Speed: 2.2m/s

Max Straight-line Speed: 1.0m/s

Reach: 1400mm

Repeatability: $\pm 0.05\text{mm}$

Power Suply: 220-240VCA 47-63Hz 10A

Power Consumption: 600W

Ambient Temperature Range: $-10^{\circ}\text{C} \sim 45^{\circ}\text{C}$

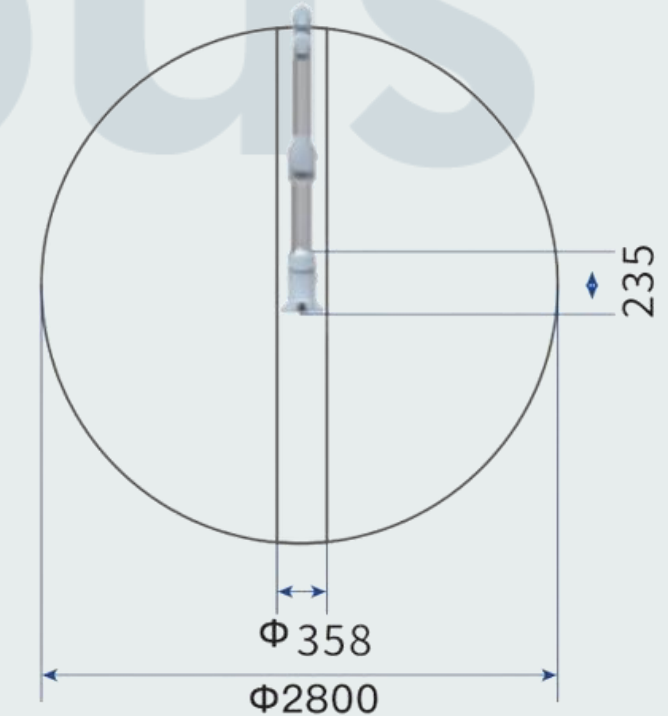
IP Class: IP54

Dimensions

Length: 1695 mm

Width: 388 mm

Height: 205 m



Workspace

GCR16-960-Series Cobot

Features

Max. payload: 16 Kg

Degrees of freedom: 6

Max TCP Speed: 3.0m/s

Max Straight-line Speed: 1.5m/s

Reach: 960mm

Repeatability: $\pm 0.05\text{mm}$

Power Suply: 220-240VCA 47-63Hz 10A

Power Consumption: 400W

Ambient Temperature Range: $-10^{\circ}\text{C}\sim 45^{\circ}\text{C}$

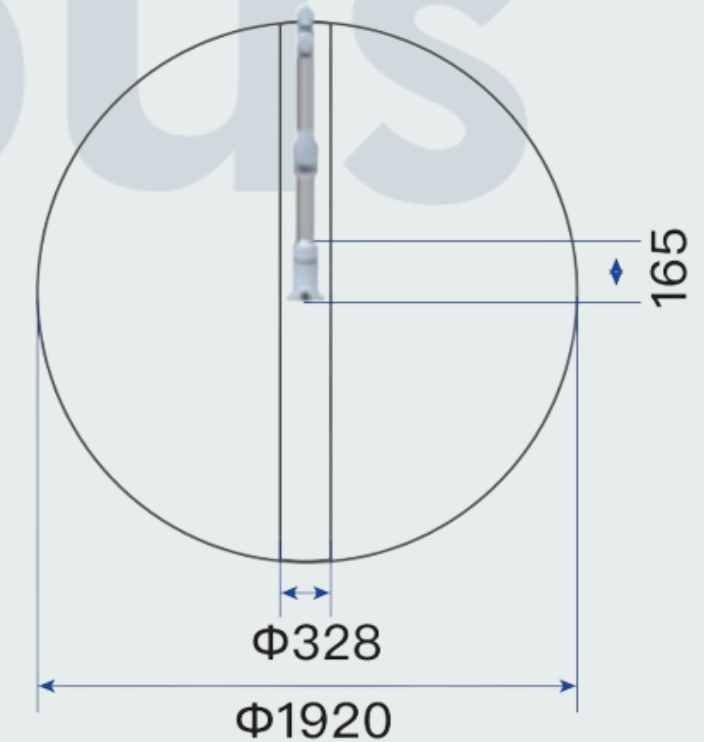
IP Class: IP54

Dimensions

Length: 1180 mm

Width: 388 mm

Height: 205 m



Workspace

GCR20-1100-Series Cobot

Features

Max. payload: 20 Kg

Degrees of freedom: 6

Max TCP Speed: 2.0m/s

Max Straight-line Speed: 1.0m/s

Reach: 1100mm

Repeatability: $\pm 0.05\text{mm}$

Power Suply: 220-240VCA 47-63Hz 10A

Power Consumption: 600W

Ambient Temperature Range: $-10^{\circ}\text{C} \sim 45^{\circ}\text{C}$

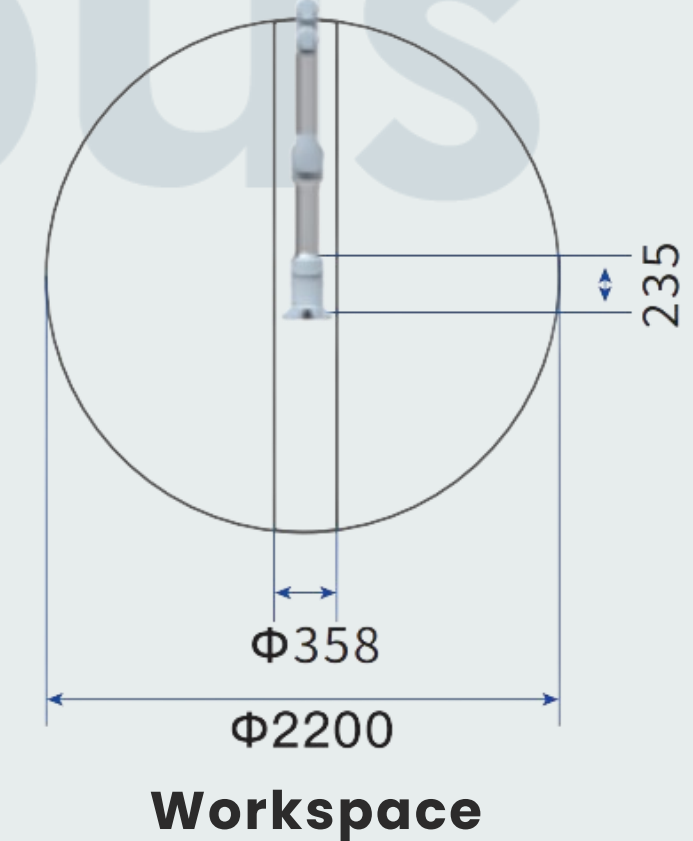
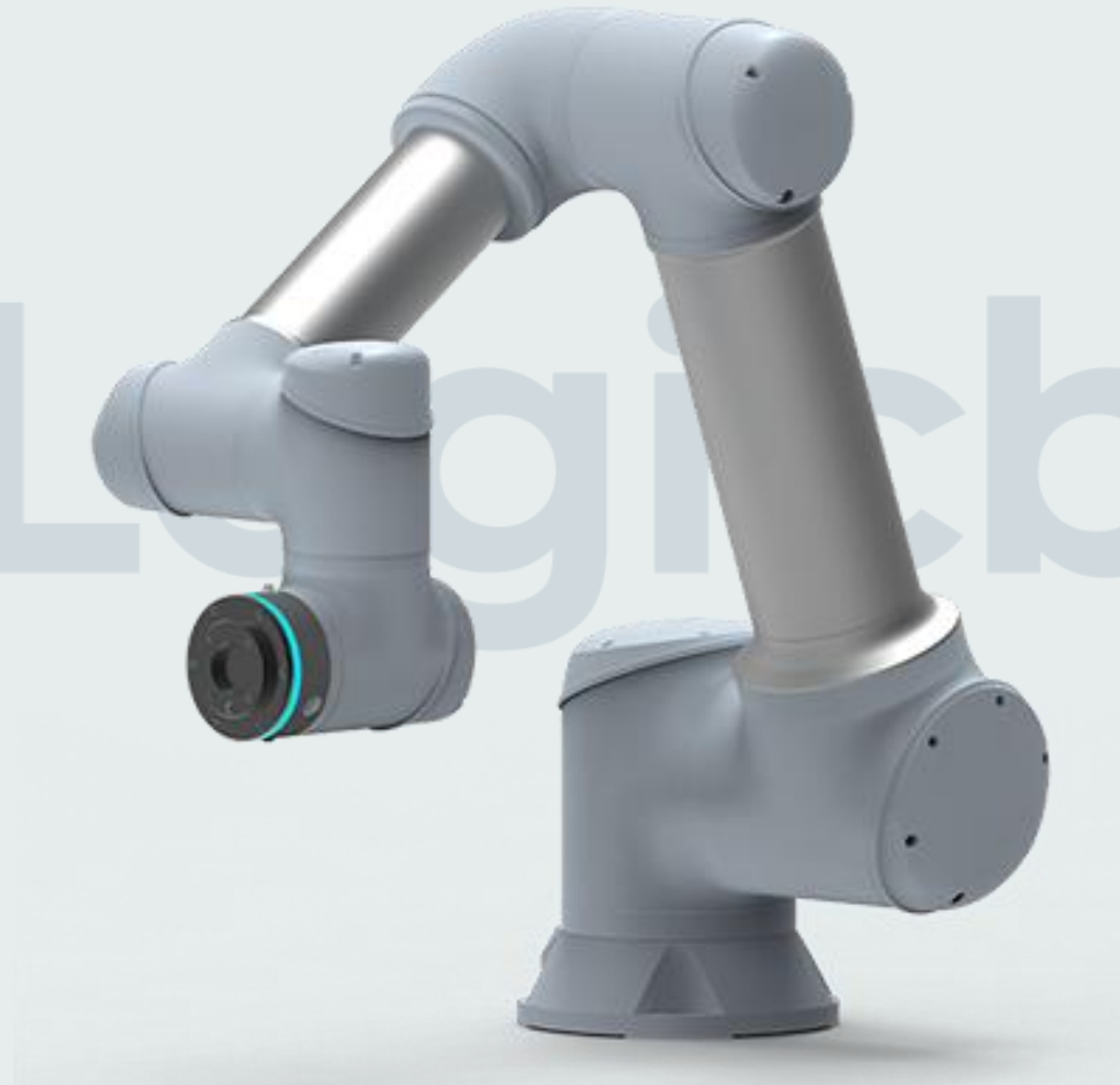
IP Class: IP54

Dimensions

Length: 1395 mm

Width: 420 mm

Height: 290 m



GCR25-1800-Series Cobot

Features

Max. payload: 25 Kg

Degrees of freedom: 6

Max TCP Speed: 2.5m/s

Max Straight-line Speed: 1.5m/s

Reach: 1800mm

Repeatability: $\pm 0.05\text{mm}$

Power Suply: 220-240VCA 47-63Hz 10A

Power Consumption: 600W

Ambient Temperature Range: $-10^{\circ}\text{C} \sim 45^{\circ}\text{C}$

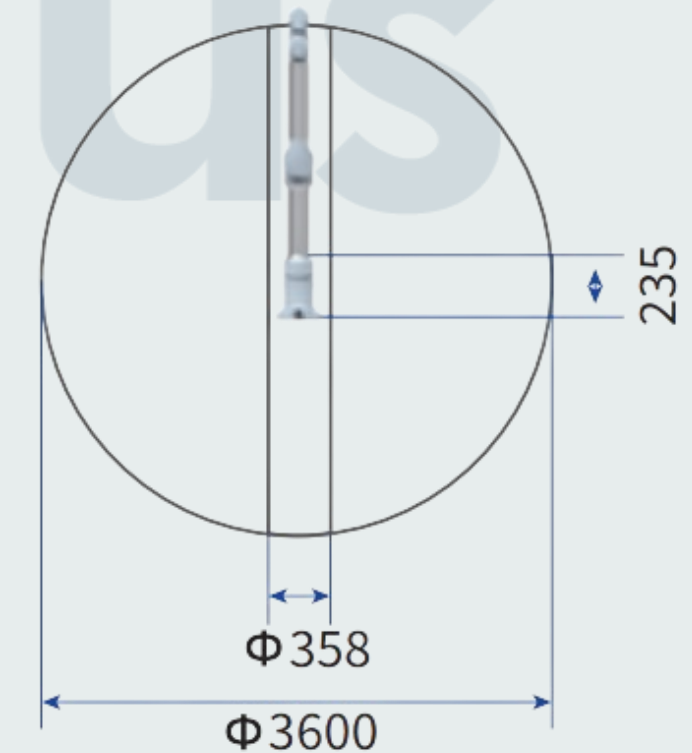
IP Class: IP54

Dimensions

Length: 2300 mm

Width: 440 mm

Height: 252 m



Workspace



For over 30 years, the Brooks team (formerly Precise Automation) has revolutionized the automation industry. From developing the PUMA robot to founding Adept Technology and now producing the first complete line of collaborative industrial robots, compact motion controllers, and easy-to-integrate vision software, they continue to create technology that simplifies automation.



Collaborative Robot

PF30-MA-0040X-4

Features

J1 Axis: 400mm

J2 Axis: ± 90 degrees

J3 Axis: ± 167 degrees

J4 Axis: ± 970 degrees

Max Reach No Gripper Version: 584mm to center of ISO mounting flange

Max Reach Servo Gripper Version: 662mm end of finger mounts

Maximum Acceleration: 0.2G with 1Kg payload

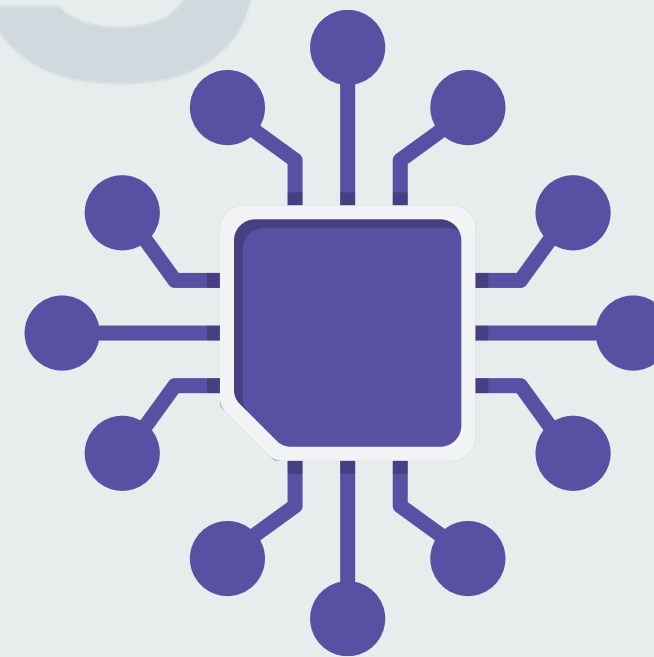
Maximum Speed: 500mm/sec in Z, 1,500mm/sec in horizontal plane with 1Kg

Maximum Payload: 3Kg including gripper, 2.5Kg with typical 0.5Kg gripper

Repeatability: $\pm 0.05\mu\text{m}$

Dimensions

Height: 400 mm



Collaborative Robot PF30-MA-0040X-7

Features

J1 Axis: 400mm

J2 Axis: ± 90 degrees

J3 Axis: ± 167 degrees

J4 Axis: ± 970 degrees

Max Reach No Gripper Version: 584mm to center of ISO mounting flange

Max Reach Servo Gripper Version: 662mm end of finger mounts

Maximum Acceleration: 0.2G with 1Kg payload

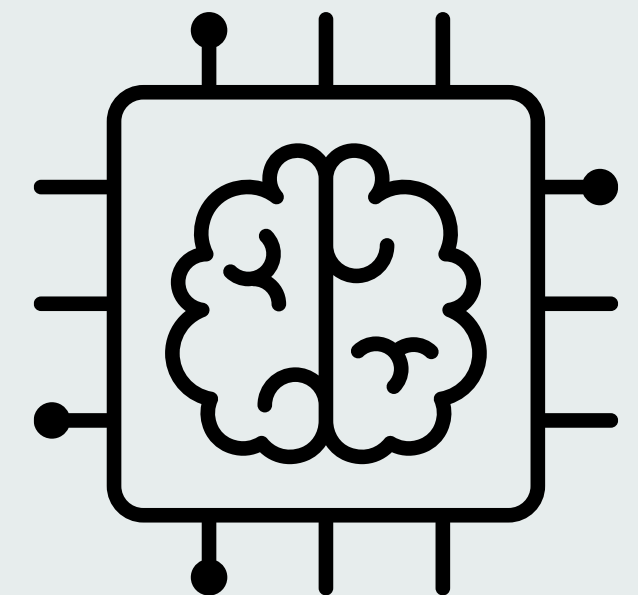
Maximum Speed: 500mm/sec in Z, 1,500mm/sec in horizontal plane with 1Kg

Maximum Payload: 3Kg including gripper, 2.5Kg with typical 0.5Kg gripper

Repeatability: $\pm 0.05\mu\text{m}$

Dimensions

Height: 750 mm



Collaborative Robot

PF30-MA-0040X-12

Features

J1 Axis: 400mm

J2 Axis: ± 90 degrees

J3 Axis: ± 167 degrees

J4 Axis: ± 970 degrees

Max Reach No Gripper Version: 584mm to center of ISO mounting flange

Max Reach Servo Gripper Version: 662mm end of finger mounts

Maximum Acceleration: 0.2G with 1Kg payload

Maximum Speed: 500mm/sec in Z, 1,500mm/sec in horizontal plane with 1Kg

Maximum Payload: 3Kg including gripper, 2.5Kg with typical 0.5Kg gripper

Repeatability: $\pm 0.05\mu\text{m}$

Dimensions

Height: 1160 mm

1160 mm



Collaborative Robot

VP06-MP-PAVP6

Features

Axis J1: ± 160 degrees

Axis J2: ± 120 degrees

Axis J3: $\pm 160 + 19$ degrees

Axis J4: ± 160 degrees

Axis J5: ± 120 degrees

Axis J6: ± 360 degrees

Repeatability: 20 μm at the center of the tool flange

Load Capacity 2.5 kg if the gripper points down within ± 45 degrees. 2.0 kg if the gripper tilts more than ± 45 degrees.

Required Power: Dual input range: 90 to 132 VAC and 180 to 264 VAC, 50–60 Hz, 200W normal, maximum 400W

Dimensions

Weight: 17 Kg



Collaborative Robot

VP06-MP-PAVP6-6

Features

Axis J1: ± 170 degrees

Axis J2: $+135 / -100$ degrees

Axis J3: $+160 / -119$ degrees

Axis J4: ± 190 degrees

Axis J5: ± 120 degrees

Axis J6: ± 360 degrees

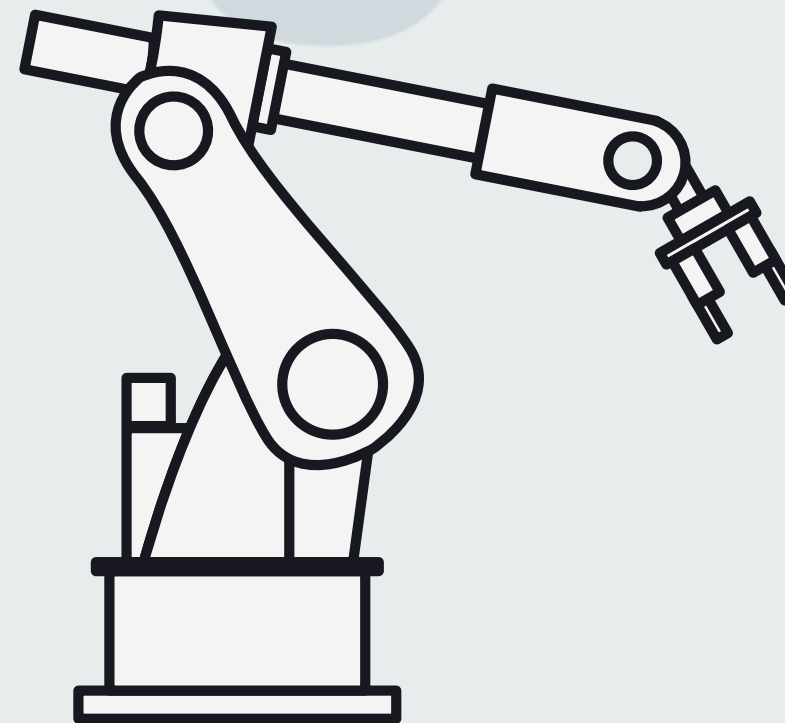
Repeatability: 30 μm at the center of the tool flange

Load Capacity: 7.0 kg if the gripper points down within ± 45 degrees. 6.0 kg if the gripper tilts more than ± 45 degrees.

Required Power: Dual input range: 90 to 132 VAC and 180 to 264 VAC, 50–60 Hz, 1000W normal, maximum 2000W

Dimensions

Weight: 36 Kg



Collaborative Robot

VP06-MP-PAVP6-8

Features

Axis J1: ± 170 degrees

Axis J2: $+135 / -100$ degrees

Axis J3: $+160 / -119$ degrees

Axis J4: ± 190 degrees

Axis J5: ± 120 degrees

Axis J6: ± 360 degrees

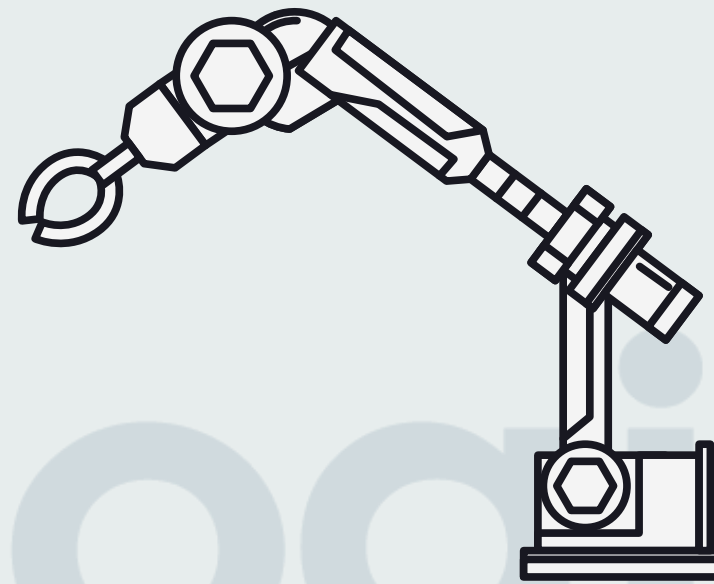
Repeatability: 30 μm at the center of the tool flange

Load Capacity: 7.0 kg if the gripper points down within ± 45 degrees. 6.0 kg if the gripper tilts more than ± 45 degrees.

Required Power: Dual input range: 90 to 132 VAC and 180 to 264 VAC, 50–60 Hz, 1000W normal, maximum 2000W

Dimensions

Weight: 36 Kg



Cartesian Robot

PP00-MA-00120-S

Features

X Axis: 500 mm standard, 1090 mm option
available in XYZ version 685 mm standard, 1270 mm option available in XZ version

Y Axis: 350mm standard

Z Axis: 260mm in XYZ version 229mm in XZ version

Repeatability: $\pm 100 \mu\text{m}$ overall in X, Y & Z directions at 18-22 degrees C

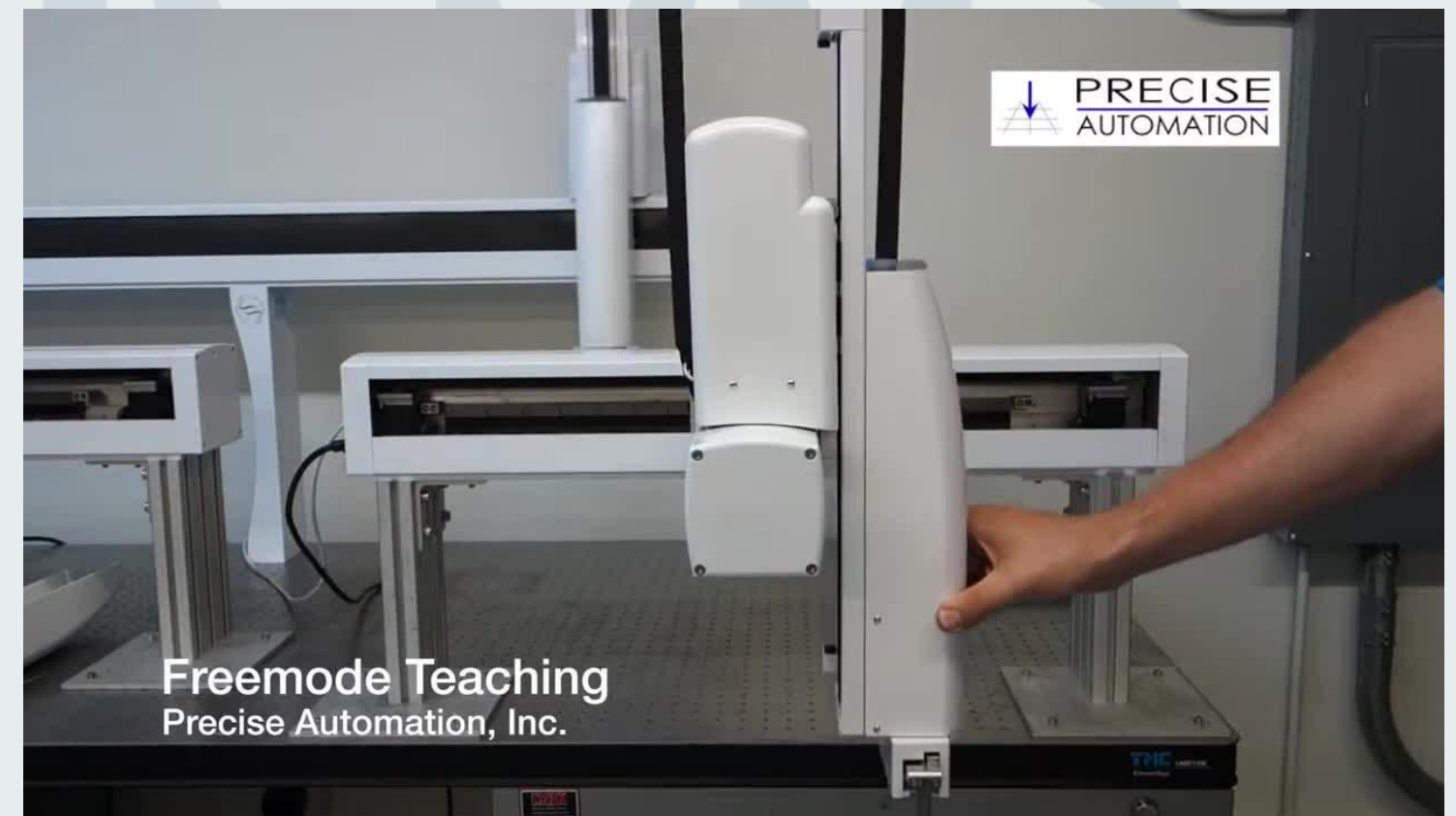
Maximum Acceleration: 1.0 G with 500 gm payload

Maximum Speed: 1,500 mm/sec in X/Y

Required Power: 90 to 264 VAC, single phase, 50-60 Hz, 365 watts maximum

Dimensions

Weight: 20 kg for 635 mm travel version, 32 kg for 1270 mm travel version



Cartesian Robot

PPOS-MA-00130-S

Features

X Axis: 500 mm standard, 1090 mm option
available in XYZ version 685 mm standard, 1270
mm option available in XZ version

Y Axis: 350mm standard

Z Axis: 260mm in XYZ version 229mm in XZ
version

Theta Axis: ± 270 degrees

Repeatability: ± 100 μm overall in X, Y and Z
directions at 18 -22 degrees C

Maximum Acceleration: 1.0 G with 500 gm payload

Maximum Speed: 1,500 mm/sec in X/Y

Required Power: 90 to 264 VAC, single phase, 50-
60 Hz, 365 watts maximum

Dimensions

Weight: 20 kg for 635 mm travel version, 32 kg for 1270
mm travel version



Cartesian Robot

PP00-MA-00120-L

Features

X Axis: 500 mm standard, 1090 mm option available in XYZ version 685 mm standard, 1270 mm option available in XZ version

Y Axis: 350mm standard

Z Axis: 260mm in XYZ version 229mm in XZ version

Theta Axis: ± 270 degrees

Repeatability: ± 100 μm overall in X, Y and Z directions at 18 -22 degrees C

Maximum Acceleration: 1.0 G with 500 gm payload

Maximum Speed: 1,500 mm/sec in X/Y

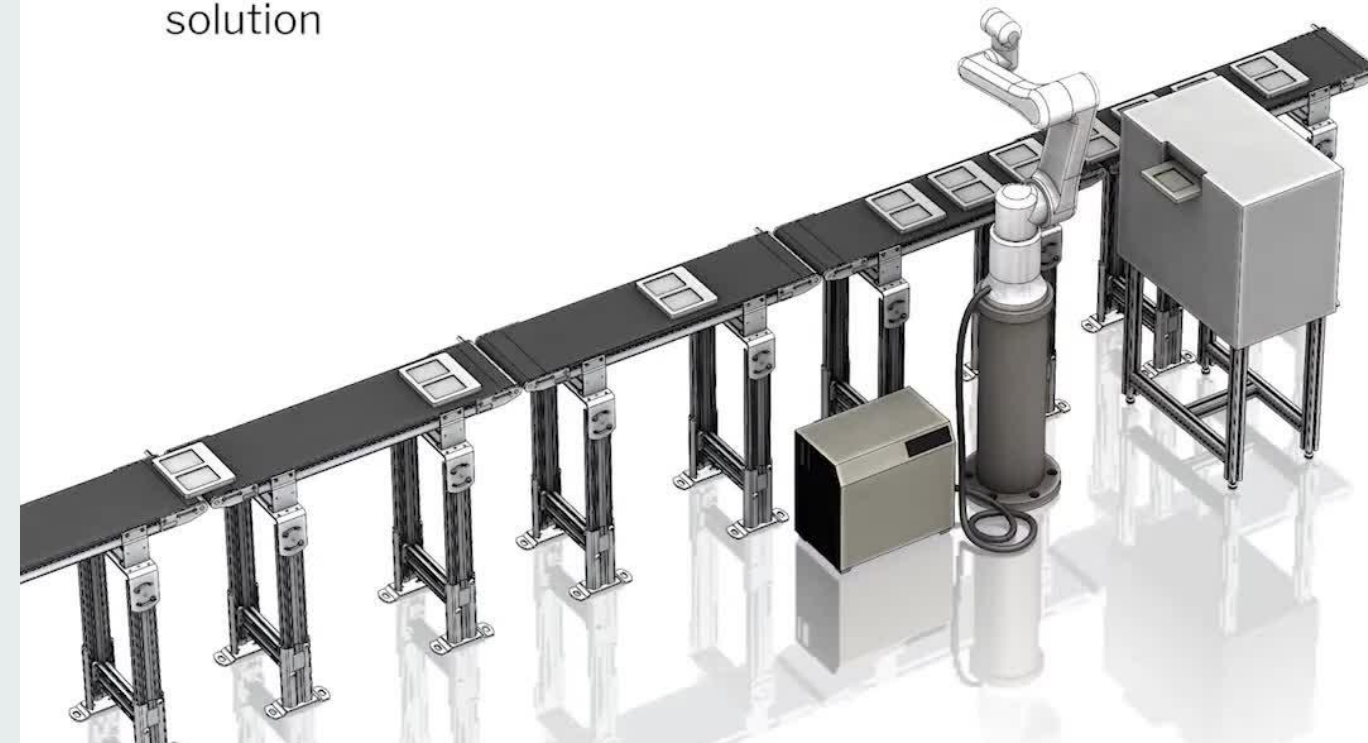
Required Power: 90 to 264 VAC, single phase, 50-60 Hz, 365 watts maximum

Dimensions

Weight: 20 kg for 635 mm travel version, 32 kg for 1270 mm travel version



Traditional collaborative solution



Cartesian Robot

PP00-MA-00131-S

Features

X Axis: 500 mm standard, 1090 mm option
available in XYZ version 685 mm standard, 1270 mm option available in XZ version

Y Axis: 350mm standard

Z Axis: 260mm in XYZ version 229mm in XZ version

Repeatability: $\pm 100 \mu\text{m}$ overall in X, Y and Z directions at 18 -22 degrees C

Maximum Acceleration: 1.0 G with 500 gm payload

Maximum Speed: 1,500 mm/sec in X/Y

Required Power: 90 to 264 VAC, single phase, 50-60 Hz, 365 watts maximum

Dimensions

Weight: 20 kg for 635 mm travel version, 32 kg for 1270 mm travel version



Cartesian Robot

PPOS-MA-00140-S

Features

X Axis: 500 mm standard, 1090 mm option available in XYZ version 685 mm standard, 1270 mm option available in XZ version

Y Axis: 350mm standard

Z Axis: 260mm in XYZ version 229mm in XZ version

Theta Axis: ± 270 degrees

Repeatability: $\pm 100 \mu\text{m}$ overall in X, Y and Z directions at 18 -22 degrees C

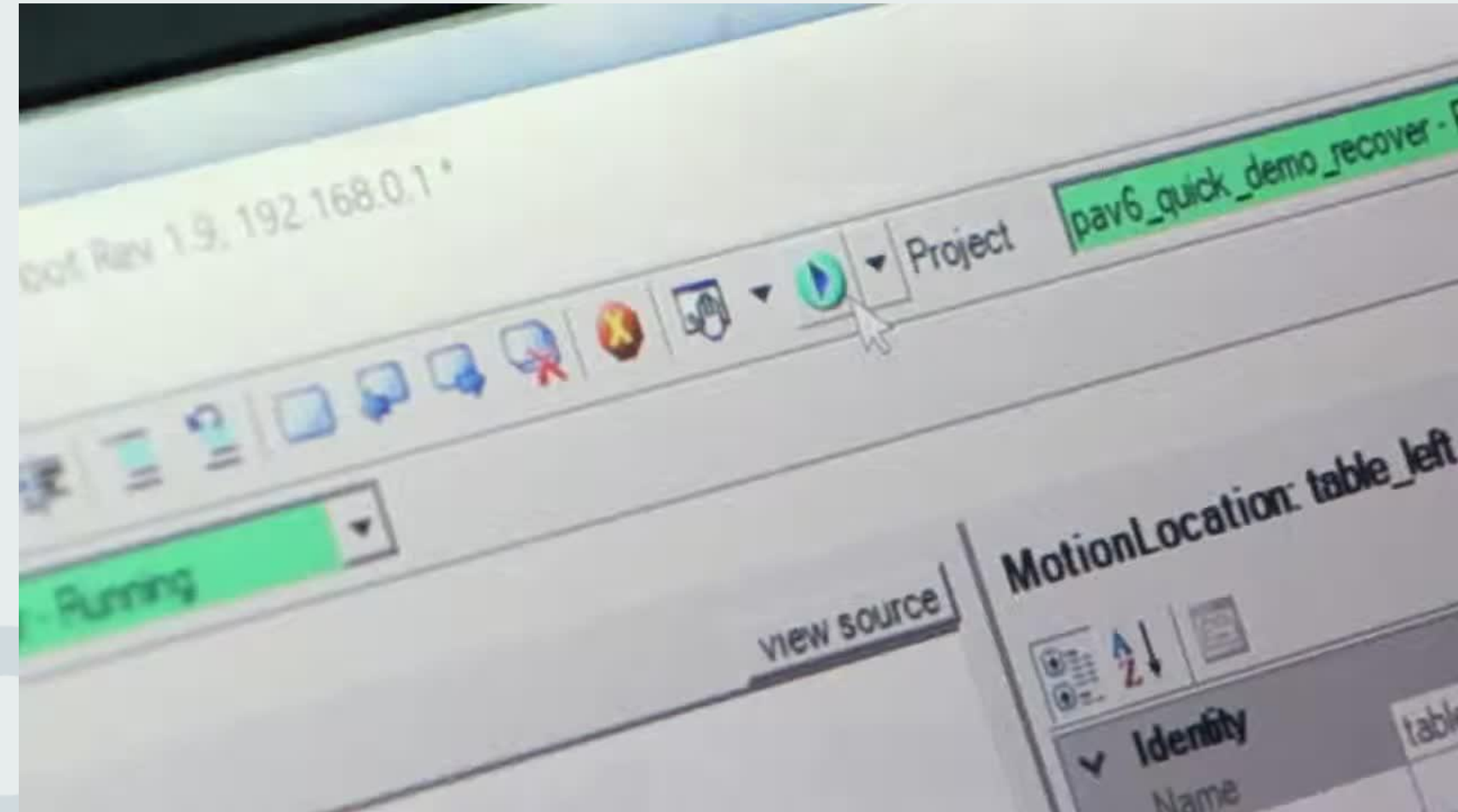
Maximum Acceleration: 1.0 G with 500 gm payload

Maximum Speed: 1,500 mm/sec in X/Y

Required Power: 90 to 264 VAC, single phase, 50-60 Hz, 365 watts maximum

Dimensions

Weight: 20 kg for 635 mm travel version, 32 kg for 1270 mm travel version



Cartesian Robot

PP00-MA-00131-L

Features

X Axis: 500 mm standard, 1090 mm option
available in XYZ version 685 mm standard, 1270 mm option available in XZ version

Y Axis: 350mm standard

Z Axis: 260mm in XYZ version 229mm in XZ version

Repeatability: $\pm 100 \mu\text{m}$ overall in X, Y and Z directions at 18 -22 degrees C

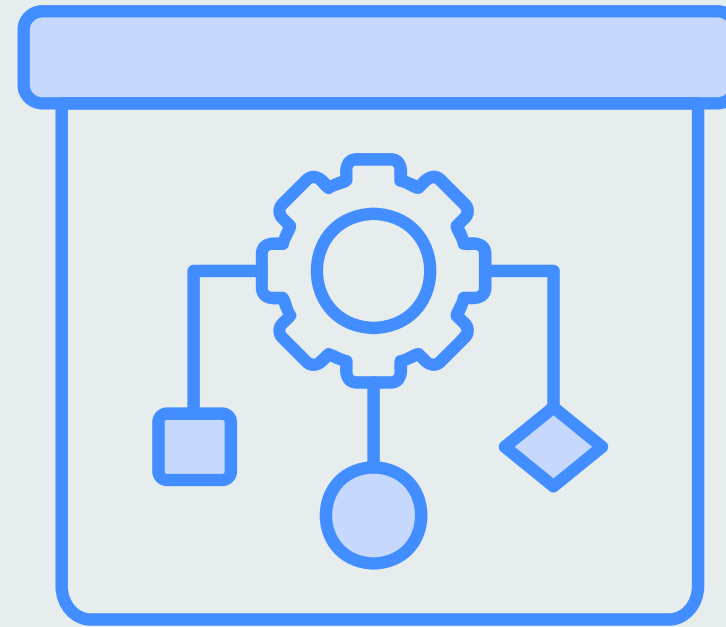
Maximum Acceleration: 1.0 G with 500 gm payload

Maximum Speed: 1,500 mm/sec in X/Y

Required Power: 90 to 264 VAC, single phase, 50-60 Hz, 365 watts maximum

Dimensions

Weight: 20 kg for 635 mm travel version, 32 kg for 1270 mm travel version



Cartesian Robot

PPOS-MA-00140-L

Features

X Axis: 500 mm standard, 1090 mm option
available in XYZ version 685 mm standard, 1270 mm option available in XZ version

Y Axis: 350mm standard

Z Axis: 260mm in XYZ version 229mm in XZ version

Repeatability: $\pm 100 \mu\text{m}$ overall in X, Y and Z directions at 18 -22 degrees C

Maximum Acceleration: 1.0 G with 500 gm payload

Maximum Speed: 1,500 mm/sec in X/Y

Required Power: 90 to 264 VAC, single phase, 50-60 Hz, 365 watts maximum

Dimensions

Weight: 20 kg for 635 mm travel version, 32 kg for 1270 mm travel version

